

Catalogue No. AB0054-200

Qty: 600 µg (3 mg/ml)

ZO-1 Polyclonal Antibody

Source: Goat

General description: Goat polyclonal to TJP1 tight junction protein 1 (TJP1). TJP1 is located on a cytoplasmic membrane surface of intercellular tight junctions and may be involved in signal transduction at cell-cell junctions.

Alternative names: ZO-1 and zona occludens protein 1 antibody.

Form: Polyclonal antibody supplied as a 200 µl (3 mg/ml) aliquot in PBS, 20% glycerol and 0.05%

Reactivity: Reacts against human, rat, mouse, canine and monkey proteins.

sodium azide. This antibody is epitope-affinity purified from goat antiserum.

Immunogen: Purified recombinant peptide derived from within residues 1,580 aa to the C-terminus of human ZO-1 produced in *E. coli*.

Specificity: Detects endogenous levels of total ZO-1 by Western blot in whole cell and tissue lysates.

Sample	Western blot	Immuno-fluorescence	Histochemistry (paraffin)	Histochemistry (frozen)
human	+++	+++	+++	+++
rat	+++	+++	+++	+++
mouse	+++	+++	+++	+++
canine	+++	+++	+++	+++
monkey	+++	+++	+++	+++

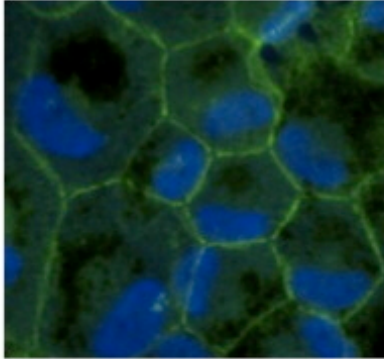
+++ excellent, ++ good, + poor, ND not determined

Usage: Western blot 1:500-1:2,000
 Immunofluorescence 1:50-1:250
 Immunohistochemistry (paraffin) 1:50-1:200
 Immunohistochemistry (frozen) 1:50-1:200

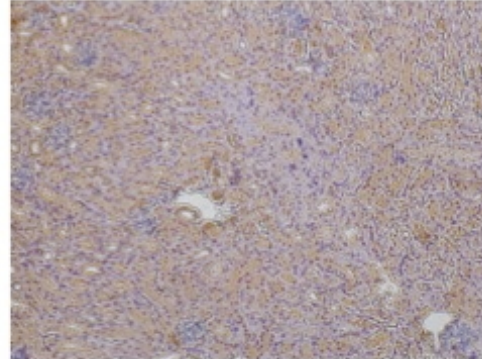
Storage: Store at -20 C for long-term storage. Store at 2-8 C for up to one month.

Special instructions: Avoid freeze/thaw cycles.

References:



Immunofluorescence of primary RPE cells with ZO-1 Ab (AB0054) at 1/100 dilution.



Immunoperoxidase of polyclonal antibody to ZO-1 (1:200) on paraformaldehyde-fixed paraffin-embedded mouse kidney;

For research use only, not for diagnostic use

SICGEN's Proprietary Immunogen Policy

In order to produce high specific antibodies SICGEN has invested a lot of time and effort into selecting immunogen sequences. SICGEN has decided to protect this information by not publishing it on the website. However, these sequences are available on request.