

Product Name : ES-E14TG2a (mouse pluripotent embryonic stem cell) whole cell lysate (non-denatured)  
 Catalog# : L045V2  
 Size / Price : 50 µg, Ask for Larger Size  
 \*For research only, not for resale

 Inquiry

 Place Order

 Printer Friendly

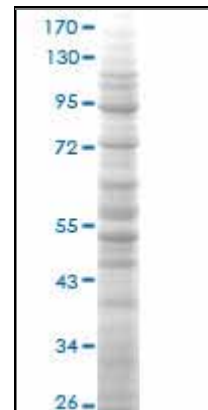
 PDF Download

 Email Page

### Product Information

Tissue : Embryonic  
 Type : Whole Cell  
 Lysis buffer : Modified RIPA Lysis Buffer: 50 mM Tris-HCl pH 7.4, 150 mM NaCl, 1mM EDTA, 1% Triton X-100, 0.1% SDS, 1% sodium deoxycholate, 1mM PMSF, & Protease Inhibitor Cocktail (Sigma) (AEBSF 10.4 mM, Aprotinin 8 µM, Leupeptin 0.2 mM, Bestatin 0.4 mM, Pepstatin A 0.15 mM & E-64 0.14 mM, with Sigma recommendation).  
 Concentration : 4 mg/ml  
 Quantity : 50 µg /vial  
 Formulation : In modified RIPA Lysis Buffer:50 mM Tris-HCl pH 7.4, 150 mM NaCl, 1mM EDTA, 1% Triton X-100, 0.1% SDS, 1% Sodium deoxycholate, 1mM PMSF, & Protease Inhibitor Cocktail (Sigma) (AEBSF 10.4 mM, Aprotinin 8 µM, Leupeptin 0.2 mM, Bestatin 0.4 mM, Pepstatin A 0.15 mM & E-64 0.14 mM, with Sigma recommendation).Use it directly for immuno-precipitation, or heat lysate with SDS gel loading buffer to 95°C for 5 minutes followed by rapid cooling for western blot application. If dissociating conditions are required, add reducing agent prior to heating.  
 Quality Control Testing : Lysate quality was assured with a 12% SDS-PAGE Gel stained with Commassive brilliant blue.

QC SDS-PAGE Gel



 Protocol Download

### Application

Western Blot, Immunoprecipitation