

GLCE (Human) IP-WB Antibody Pair

產品編號 #: H00026035-PW1

規格 : [1 Set]

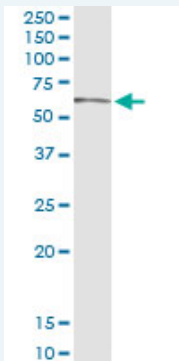
List All

Specification

Product Description: This IP-WB antibody pair set comes with one antibody for immunoprecipitation and another to detect the precipitated protein in western blot.

Reactivity: Human

Quality Control Testing: Immunoprecipitation-Western Blot (IP-WB)



Immunoprecipitation of GLCE transfected lysate using rabbit polyclonal anti-GLCE and Protein A Magnetic Bead ([U0007](#)), and immunoblotted with mouse purified polyclonal anti-GLCE.

Supplied Product: Antibody pair set content:
 1. Antibody pair for IP: rabbit polyclonal anti-GLCE (300 ul)
 2. Antibody pair for WB: mouse purified polyclonal anti-GLCE (50 ug)

Storage Instruction: Store reagents of the antibody pair set at -20°C or lower. Please aliquot to avoid repeated freeze thaw cycle. Reagents should be returned to -20°C storage immediately after use.

MSDS:  [Download](#)

Applications

Immunoprecipitation-Western Blot

[Protocol Download](#)

Gene Information

Entrez GeneID: [26035](#)

Gene Name: GLCE

Gene Alias: HSEPI, KIAA0836

Gene: glucuronic acid epimerase

Description:**Gene Ontology:** [Hyperlink](#)**Gene Summary:** Heparan sulfate (HS) is a negatively charged cell surface polysaccharide required for the biologic activities of circulating extracellular ligands. GLCE is responsible for epimerization of D-glucuronic acid (GlcA) to L-iduronic acid (IdoA) of HS, which endows the nascent polysaccharide chain with the ability to bind growth factors and cytokines (Ghiselli and Agrawal, 2005 [PubMed 15853773]).[supplied by OMIM]**Other Designations:** D-glucuronyl C5-epimerase,UDP-glucuronic acid epimerase,glucuronyl C5-epimerase,heparan sulfate epimerase,heparin/heparan sulfate-glucuronic acid C5-epimerase**Gene Pathway**

[Heparan sulfate biosynthesis](#) [Metabolic pathways](#)**Related Disease**

[Tobacco Use Disorder](#)

[服務條款](#) | [隱私權政策](#) | [著作及商標](#) | [網站地圖](#)

©2015 亞諾法生技股份有限公司 Abnova Corporation. 版權所有.