







ABNOVA (TAIWAN) CORPORATION  
9F, No. 108, Jhouzih St., Niehu, Taipei, Taiwan  
Tel: 886-2-8751-1888; Fax: 886-2-8751-1166  
E mail: sales@abnova.com.tw  
Website: www.abnova.com.tw

Product Name :	IRF6 293T Cell Transient Overexpression Lysate(Denatured)	 Inquiry
Catalog# :	H00003664-T01	 Place Order
Size / Price :	100ul/vial, Ask for Larger Size	 Printer Friendly
	*For research only, not for resale	 PDF Download

### Gene Information

---

Gene Name :	IRF6	Related Disease :	popliteal pterygium syndrome, Van der Woude syndrome
Gene Description :	interferon regulatory factor 6	Gene Pathway :	bioinformation not available
Gene Alias :	LPS, OFC6, PIT, PPS, VWS		
Entrez GeneID :	3664		
GenBank Accession# :	BC014852		
Omim ID :	119300 119500 607199 608864		
Protein Accession# :	AAH14852		
Gene Ontology :	Hyperlink		

This gene encodes a member of the interferon regulatory transcription factor (IRF) family. Family members share a highly-conserved N-terminal helix-turn-helix DNA-binding domain and a less conserved C-terminal protein-binding domain. Mutations in this gene can cause van der Woude syndrome and popliteal pterygium syndrome. This protein is involved in palate formation.

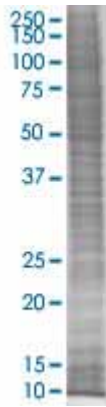
### Product Information

---

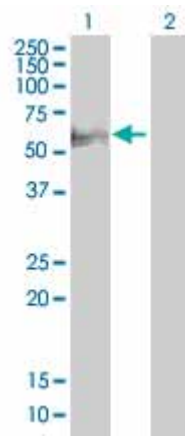
Host Cell :	293T
Plasmid :	pCMV-IRF6 full length
Lysis buffer :	1X Sample Buffer
Concentration :	mg/ml
Quantity :	100 ug/vial
Formulation :	In 60mM Tris-HCl, 2%SDS, 10% glycerol, 5% 2-mercaptoethanol, pH 6.8.
Storage Instruction :	Store at -20°C. Please avoid repeated freeze / thaw cycles.
Quality Control Testing :	Transient overexpressed protein was detected by Anti-IRF6 antibody in Western Blot.

SDS-PAGE Gel

Western Blot



IRF6 transfected lysate



Lane 1: IRF6 transfected lysate ( 51.48 KDa).  
Lane 2: Non-transfected lysate.

## Applications

---

Western Blot