

## OAT Antibody (N-term)

Peptide Affinity Purified Rabbit Polyclonal Antibody (Pab)

Catalog # AP8897a

### Specification

#### OAT Antibody (N-term) - Product Information

Application	WB, IF, IHC-P, FC,E
Primary Accession	<a href="#">P04181</a>
Reactivity	Human, Mouse, Rat
Host	Rabbit
Clonality	Polyclonal
Isotype	Rabbit Ig
Calculated MW	48535
Antigen Region	27-55

#### OAT Antibody (N-term) - Additional Information

Gene ID 4942

#### Other Names

Ornithine aminotransferase, mitochondrial,  
 Ornithine delta-aminotransferase,  
 Ornithine--oxo-acid aminotransferase,  
 Ornithine aminotransferase, hepatic form,  
 Ornithine aminotransferase, renal form, OAT

#### Target/Specificity

This OAT antibody is generated from rabbits immunized with a KLH conjugated synthetic peptide between 27-55 amino acids from the N-terminal region of human OAT.

#### Dilution

WB~~1:1000  
 IF~~1:10~50  
 IHC-P~~1:10~50  
 FC~~1:10~50

#### Format

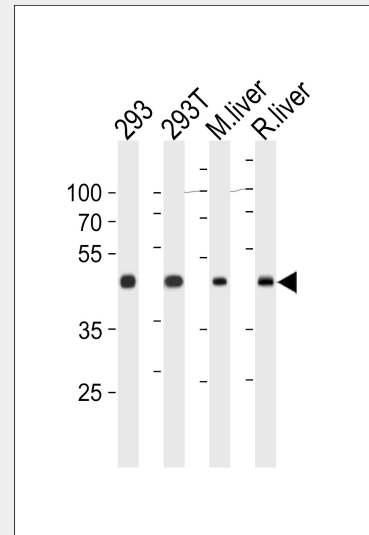
Purified polyclonal antibody supplied in PBS with 0.09% (W/V) sodium azide. This antibody is purified through a protein A column, followed by peptide affinity purification.

#### Storage

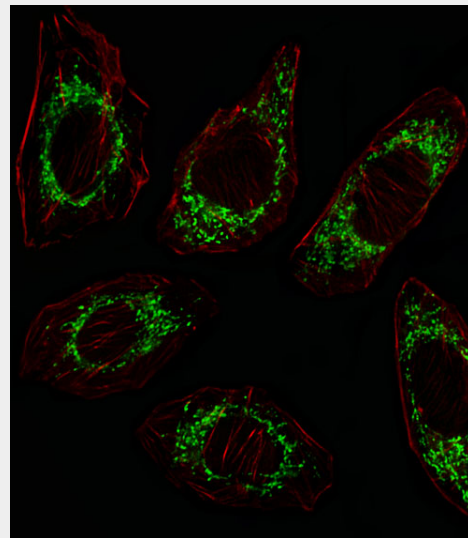
Maintain refrigerated at 2-8°C for up to 6 months. For long term storage store at -20°C in small aliquots to prevent freeze-thaw cycles.

#### Precautions

OAT Antibody (N-term) is for research use only and not for use in diagnostic or therapeutic procedures.



OAT Antibody (N-term) (Cat. #AP8897a) western blot analysis in 293,293T cell line ,mouse liver and rat liver tissue lysates (35ug/lane).This demonstrates the OAT antibody detected the OAT protein (arrow).



Fluorescent image of A549 cell stained with OAT Antibody (N-term)(Cat#AP8897a/SA100310AG).A549 cells were fixed with 4% PFA (20 min), permeabilized with Triton X-100 (0.1%, 10 min), then incubated with OAT primary antibody (1:25, 1 h at 37°C). For secondary antibody, Alexa Fluor® 488 conjugated donkey anti-rabbit antibody (green) was used (1:400, 50 min at 37°C).Cytoplasmic actin was

## OAT Antibody (N-term) - Protein Information

**Name** OAT

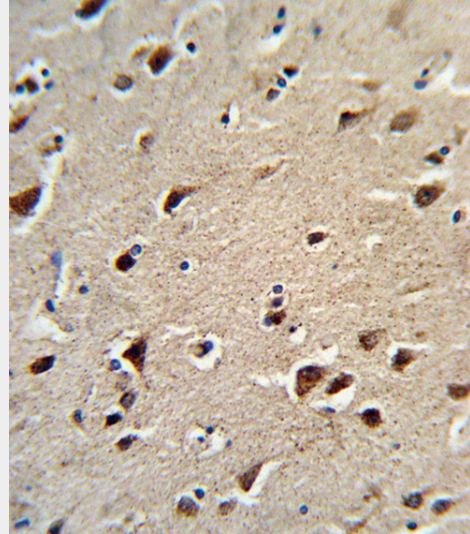
**Cellular Location**  
Mitochondrion matrix

## OAT Antibody (N-term) - Protocols

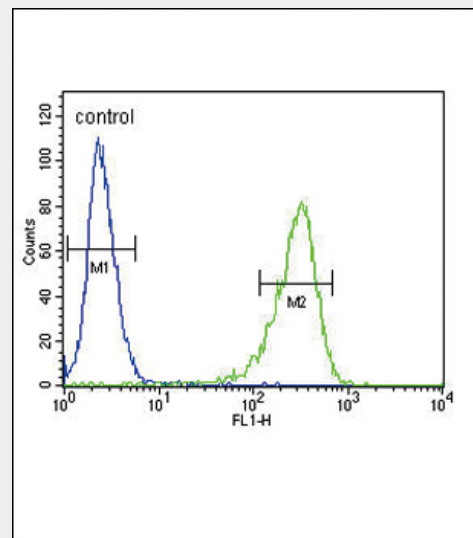
Provided below are standard protocols that you may find useful for product applications.

- [Western Blot](#)
- [Blocking Peptides](#)
- [Dot Blot](#)
- [Immunohistochemistry](#)
- [Immunofluorescence](#)
- [Immunoprecipitation](#)
- [Flow Cytometry](#)
- [Cell Culture](#)

counterstained with Alexa Fluor® 555 (red) conjugated Phalloidin (7units/ml, 1 h at 37°C).OAT immunoreactivity is localized to Mitochondrion significantly.



Formalin-fixed and paraffin-embedded human brain tissue reacted with OAT Antibody (N-term), which was peroxidase-conjugated to the secondary antibody, followed by DAB staining. This data demonstrates the use of this antibody for immunohistochemistry; clinical relevance has not been evaluated.



OAT Antibody (N-term) (Cat. #AP8897a) flow cytometric analysis of 293 cells (right histogram) compared to a negative control cell (left histogram).FITC-conjugated goat-anti-rabbit secondary antibodies were used for the analysis.

## OAT Antibody (N-term) - Background

OAT is the mitochondrial enzyme ornithine aminotransferase, which is a key enzyme in the pathway that converts arginine and ornithine into the major excitatory and inhibitory neurotransmitters glutamate and GABA.

## OAT Antibody (N-term) - References

Michaud J., et.al., Am. J. Hum. Genet.  
56:616-622(1995).