

OTC Antibody (Center)

Peptide Affinity Purified Rabbit Polyclonal Antibody (Pab)

Catalog # AP6928c

Specification

OTC Antibody (Center) - Product Information

Application	WB, IHC-P, FC,E
Primary Accession	P00480
Other Accession	P00481 , O19072 , P11725 , O9N1U7 , P84010
Reactivity	Human
Predicted	Bovine, Mouse, Pig, Rat
Host	Rabbit
Clonality	Polyclonal
Isotype	Rabbit Ig
Antigen Region	71-98

OTC Antibody (Center) - Additional Information

Gene ID 5009

Other Names

Ornithine carbamoyltransferase, mitochondrial, Ornithine transcarbamylase, OTCase, OTC

Target/Specificity

This OTC antibody is generated from rabbits immunized with a KLH conjugated synthetic peptide between 71-98 amino acids from the Central region of human OTC.

Dilution

WB~~1:1000
IHC-P~~1:10~50
FC~~1:10~50

Format

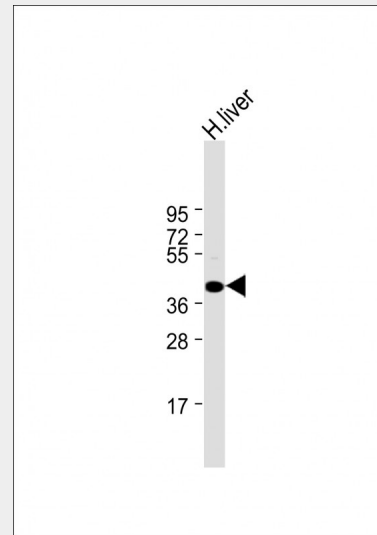
Purified polyclonal antibody supplied in PBS with 0.09% (W/V) sodium azide. This antibody is purified through a protein A column, followed by peptide affinity purification.

Storage

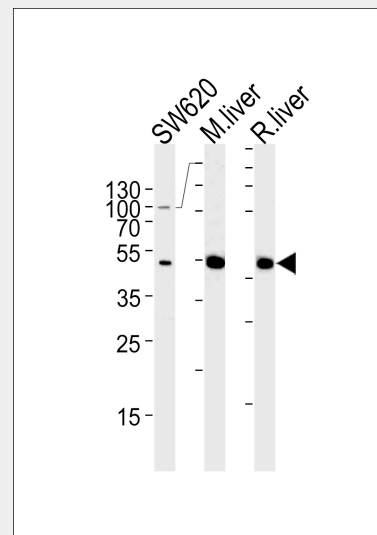
Maintain refrigerated at 2-8°C for up to 6 months. For long term storage store at -20°C in small aliquots to prevent freeze-thaw cycles.

Precautions

OTC Antibody (Center) is for research use only and not for use in diagnostic or therapeutic procedures.



Anti-OTC Antibody (Center) at 1:1000 dilution + human liver lysate Lysates/proteins at 20 µg per lane. Secondary Goat Anti-Rabbit IgG, (H+L), Peroxidase conjugated at 1/10000 dilution. Predicted band size : 40 kDa
Blocking/Dilution buffer: 5% NFDm/TBST.



OTC Antibody (Center) (Cat.# AP6928c) western blot analysis in SW620 cell line and mouse liver/rat liver lysates (35ug/lane). This demonstrates the OTC antibody detected the OTC protein (arrow).

OTC Antibody (Center) - Protein Information

Name OTC

Cellular Location

Mitochondrion matrix.

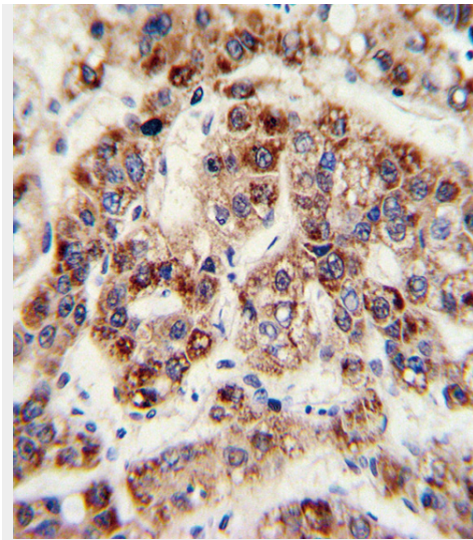
Tissue Location

Mainly expressed in liver and intestinal mucosa

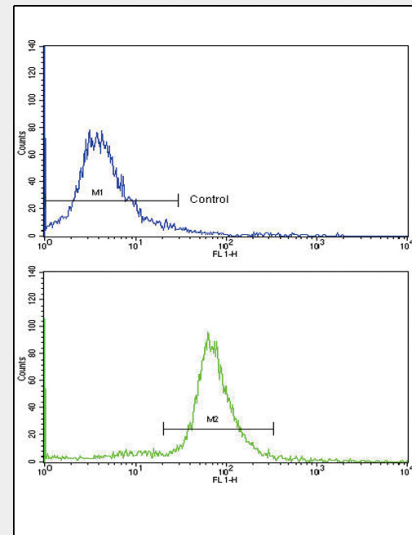
OTC Antibody (Center) - Protocols

Provided below are standard protocols that you may find useful for product applications.

- [Western Blot](#)
- [Blocking Peptides](#)
- [Dot Blot](#)
- [Immunohistochemistry](#)
- [Immunofluorescence](#)
- [Immunoprecipitation](#)
- [Flow Cytometry](#)
- [Cell Culture](#)



Formalin-fixed and paraffin-embedded human hepatocarcinoma with OTC Antibody (Center), which was peroxidase-conjugated to the secondary antibody, followed by DAB staining. This data demonstrates the use of this antibody for immunohistochemistry; clinical relevance has not been evaluated.



Flow cytometric analysis of ATDC5 cells using OTC Antibody (Center)(bottom histogram) compared to a negative control cell (top histogram). FITC-conjugated goat-anti-rabbit secondary antibodies were used for the analysis.

OTC Antibody (Center) - Background

OTC is a mitochondrial matrix enzyme. Missense, nonsense, and frameshift mutations in this enzyme lead to ornithine transcarbamylase deficiency, which causes hyperammonemia.

OTC Antibody (Center) - References

Hansmann, F., et al., *Neurosci. Lett.* 449 (1), 76-80 (2009)