

ASS Antibody (Center)
Purified Rabbit Polyclonal Antibody (Pab)
Catalog # AP6829c

Specification

ASS Antibody (Center) - Product Information

Application	WB, IHC-P, FC, IF,E
Primary Accession	P00966
Other Accession	P09034
Reactivity	Human, Mouse
Predicted	Rat
Host	Rabbit
Clonality	Polyclonal
Isotype	Rabbit Ig
Clone Names	RB20920
Calculated MW	46530
Antigen Region	192-221

ASS Antibody (Center) - Additional Information

Gene ID 445

Other Names

Argininosuccinate synthase,
Citruilline--aspartate ligase, ASS1, ASS

Target/Specificity

This ASS antibody is generated from rabbits immunized with a KLH conjugated synthetic peptide between 192-221 amino acids from the Central region of human ASS.

Dilution

WB~~1:1000
IHC-P~~1:50~100
FC~~1:10~50
IF~~1:10~50

Format

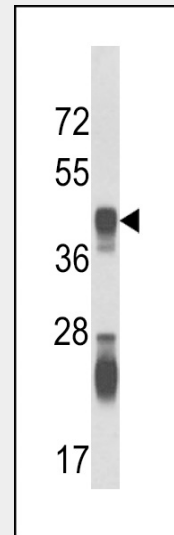
Purified polyclonal antibody supplied in PBS with 0.09% (W/V) sodium azide. This antibody is prepared by Saturated Ammonium Sulfate (SAS) precipitation followed by dialysis against PBS.

Storage

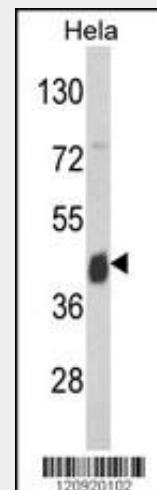
Maintain refrigerated at 2-8°C for up to 6 months. For long term storage store at -20°C in small aliquots to prevent freeze-thaw cycles.

Precautions

ASS Antibody (Center) is for research use only and not for use in diagnostic or therapeutic procedures.



Western blot analysis of ASS Antibody (Center) (Cat. #AP6829c) in mouse kidney tissue lysates (35ug/lane). ASS (arrow) was detected using the purified Pab.



Western blot analysis of ASS Antibody (Center) (Cat. #AP6829c) in HeLa cell line lysates (35ug/lane). ASS (arrow) was detected using the purified Pab.

ASS Antibody (Center) - Protein Information

Name ASS1

Synonyms ASS

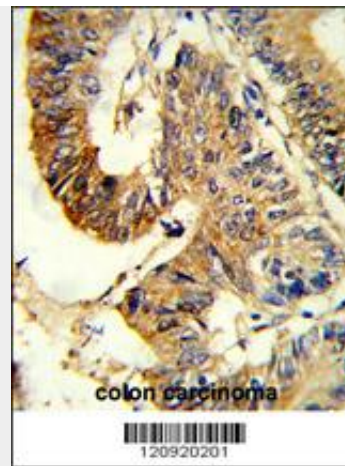
Function

Is indirectly involved in the control of blood pressure.

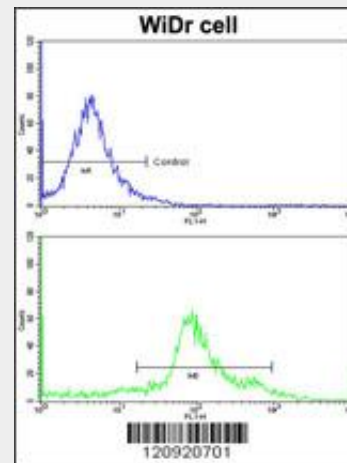
ASS Antibody (Center) - Protocols

Provided below are standard protocols that you may find useful for product applications.

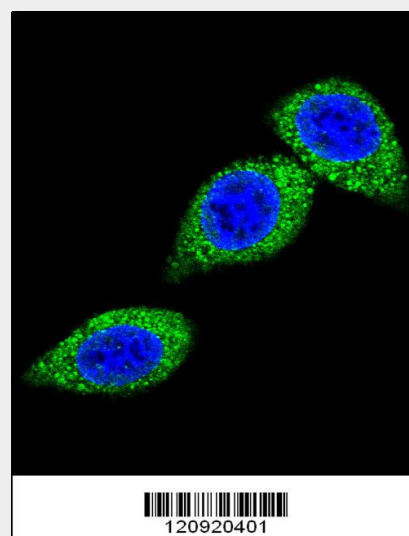
- [Western Blot](#)
- [Blocking Peptides](#)
- [Dot Blot](#)
- [Immunohistochemistry](#)
- [Immunofluorescence](#)
- [Immunoprecipitation](#)
- [Flow Cytometry](#)
- [Cell Culture](#)



Formalin-fixed and paraffin-embedded human colon carcinoma reacted with ASS Antibody (Center), which was peroxidase-conjugated to the secondary antibody, followed by DAB staining. This data demonstrates the use of this antibody for immunohistochemistry; clinical relevance has not been evaluated.



Flow cytometric analysis of widr cells using ASS Antibody (Center)(bottom histogram) compared to a negative control cell (top histogram)FITC-conjugated goat-anti-rabbit secondary antibodies were used for the analysis.



Confocal immunofluorescent analysis of ASS Antibody (Center)(Cat#AP6829c) with HeLa cell

followed by Alexa Fluor 488-conjugated goat anti-rabbit IgG (green). DAPI was used to stain the cell nuclear (blue).

ASS Antibody (Center) - Background

ASS catalyzes the penultimate step of the arginine biosynthetic pathway. There are approximately 10 to 14 copies of this gene including the pseudogenes scattered across the human genome, among which the one located on chromosome 9 appears to be the only functional gene for argininosuccinate synthetase.

ASS Antibody (Center) - References

Engel, K., et al., Hum. Mutat. 30 (3), 300-307 (2009)