

UCHL1 Antibody (C-term)

Peptide Affinity Purified Rabbit Polyclonal Antibody (Pab)

Catalog # AP2126e

Specification

UCHL1 Antibody (C-term) - Product Information

Application	WB, IF, IHC-P,E
Primary Accession	P09936
Other Accession	O00981 , O6SEG5 , O9R0P9 , O60HC8 , P23356 , O9GM50
Reactivity Predicted	Human, Rat Mouse, Monkey, Pig, Bovine
Host	Rabbit
Clonality	Polyclonal
Isotype	Rabbit Ig
Antigen Region	187-214

UCHL1 Antibody (C-term) - Additional Information

Gene ID 7345

Other Names

Ubiquitin carboxyl-terminal hydrolase isozyme L1, UCH-L1, 6---, Neuron cytoplasmic protein 95, PGP 95, PGP95, Ubiquitin thioesterase L1, UCHL1

Target/Specificity

This UCHL1 antibody is generated from rabbits immunized with a KLH conjugated synthetic peptide between 187-214 amino acids from the C-terminal region of human UCHL1.

Dilution

WB~~1:1000
 IF~~1:10~50
 IHC-P~~1:10~50

Format

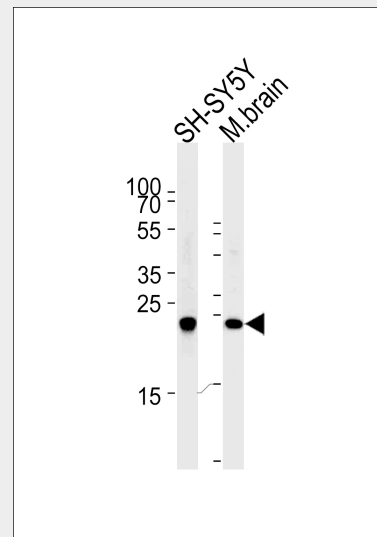
Purified polyclonal antibody supplied in PBS with 0.09% (W/V) sodium azide. This antibody is purified through a protein A column, followed by peptide affinity purification.

Storage

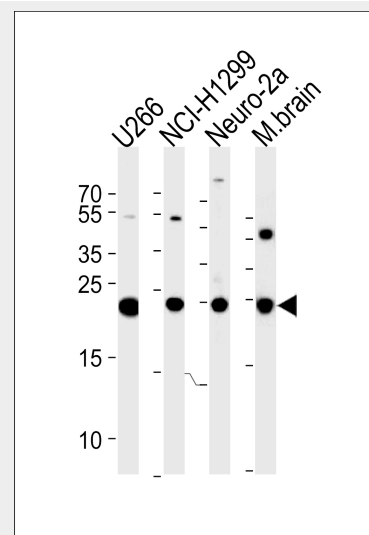
Maintain refrigerated at 2-8°C for up to 6 months. For long term storage store at -20°C in small aliquots to prevent freeze-thaw cycles.

Precautions

UCHL1 Antibody (C-term) is for research use only and not for use in diagnostic or therapeutic procedures.



Western blot analysis of lysates from SH-SY5Y cell line and mouse brain tissue (from left to right), using UCHL1 Antibody (C-term) (Cat. #AP2126e). AP2126e was diluted at 1:1000 at each lane. A goat anti-rabbit IgG H&L (HRP) at 1:5000 dilution was used as the secondary antibody. Lysates at 35ug per lane.



UCHL1 Antibody (C-term) (Cat.# AP2126e) western blot analysis in U266, NCI-H1299, mouse Neuro-2a cell line and mouse brain tissue lysates (35ug/lane). This demonstrates the UCHL1 antibody detected the UCHL1 protein (arrow).

UCHL1 Antibody (C-term) - Protein Information

Name UCHL1

Function

Ubiquitin-protein hydrolase involved both in the processing of ubiquitin precursors and of ubiquitinated proteins. This enzyme is a thiol protease that recognizes and hydrolyzes a peptide bond at the C-terminal glycine of ubiquitin. Also binds to free monoubiquitin and may prevent its degradation in lysosomes. The homodimer may have ATP-independent ubiquitin ligase activity.

Cellular Location

Cytoplasm. Endoplasmic reticulum membrane; Lipid-anchor. Note=About 30% of total UCHL1 is associated with membranes in brain

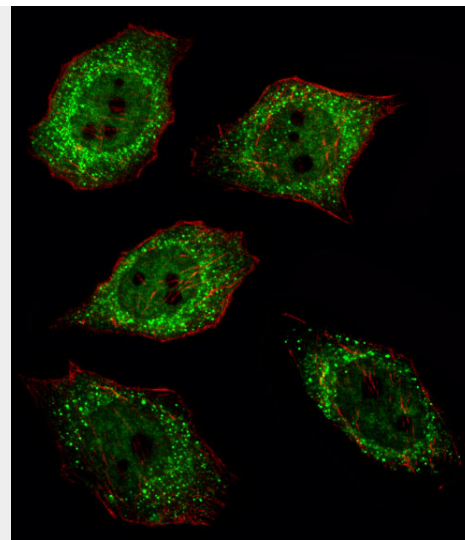
Tissue Location

Found in neuronal cell bodies and processes throughout the neocortex (at protein level). Expressed in neurons and cells of the diffuse neuroendocrine system and their tumors Weakly expressed in ovary. Down-regulated in brains from Parkinson disease and Alzheimer disease patients

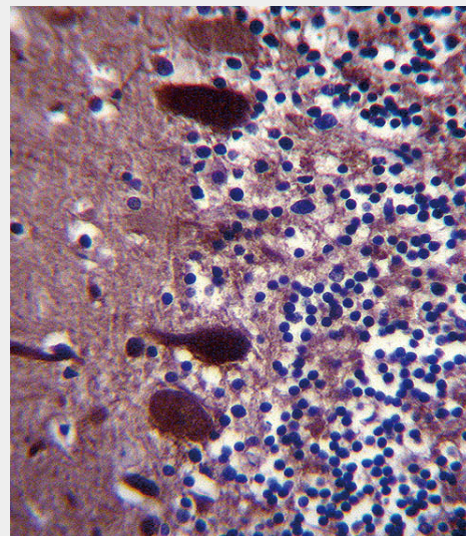
UCHL1 Antibody (C-term) - Protocols

Provided below are standard protocols that you may find useful for product applications.

- [Western Blot](#)
- [Blocking Peptides](#)
- [Dot Blot](#)
- [Immunohistochemistry](#)
- [Immunofluorescence](#)
- [Immunoprecipitation](#)
- [Flow Cytometry](#)
- [Cell Culture](#)



Fluorescent image of U251 cell stained with UCHL1 Antibody (C-term)(Cat#AP2126e/SA120806AG).U251 cells were fixed with 4% PFA (20 min), permeabilized with Triton X-100 (0.1%, 10 min), then incubated with UCHL1 primary antibody (1:25, 1 h at 37°C). For secondary antibody, Alexa Fluor® 488 conjugated donkey anti-rabbit antibody (green) was used (1:400, 50 min at 37°C).Cytoplasmic actin was counterstained with Alexa Fluor® 555 (red) conjugated Phalloidin (7units/ml, 1 h at 37°C). UCHL1 immunoreactivity is localized to Cytoplasm and Nucleus significantly.



UCHL1 Antibody (C-term) (Cat. #AP2126e)immunohistochemistry analysis in formalin fixed and paraffin embedded human pancreas tissue followed by peroxidase conjugation of the secondary antibody and DAB staining.This data demonstrates the use of UCHL1 Antibody (C-term) for immunohistochemistry. Clinical relevance has not been evaluated.



UCHL1 Antibody (C-term) (Cat. #AP2126e) immunohistochemistry analysis in formalin fixed and paraffin embedded human cerebellum tissue followed by peroxidase conjugation of the secondary antibody and DAB staining. This data demonstrates the use of UCHL1 Antibody (C-term) for immunohistochemistry. Clinical relevance has not been evaluated.

UCHL1 Antibody (C-term) - Background

UCHL1 is a member of a gene family whose products hydrolyze small C-terminal adducts of ubiquitin to generate the ubiquitin monomer. Expression of UCHL1 is highly specific to neurons and to cells of the diffuse neuroendocrine system and their tumors. It is present in all neurons (Doran et al., 1983 [PubMed 6343558]).

UCHL1 Antibody (C-term) - References

Maraganore, D.M., et al., *Mov Disord* 18(6):631-636 (2003). Nishikawa, K., et al., *Biochem. Biophys. Res. Commun.* 304(1):176-183 (2003). Liu, Y., et al., *Cell* 111(2):209-218 (2002). Caballero, O.L., et al., *Oncogene* 21(19):3003-3010 (2002). Saigoh, K., et al., *Nat. Genet.* 23(1):47-51 (1999).