

UCHL1 Antibody (N-term)

Purified Rabbit Polyclonal Antibody (Pab)

Catalog # AP2126A

Specification

UCHL1 Antibody (N-term) - Product Information

Application	WB, IHC-P, IF, FC, E
Primary Accession	P09936
Other Accession	O6SEG5 , P23356
Reactivity	Human, Mouse
Predicted	Bovine, Pig
Host	Rabbit
Clonality	Polyclonal
Isotype	Rabbit Ig
Clone Names	RB04183
Calculated MW	24824
Antigen Region	16-46

UCHL1 Antibody (N-term) - Additional Information

Gene ID 7345

Other Names

Ubiquitin carboxyl-terminal hydrolase isozyme L1, UCH-L1, 6---, Neuron cytoplasmic protein 95, PGP 95, PGP95, Ubiquitin thioesterase L1, UCHL1

Target/Specificity

This UCHL1 antibody is generated from rabbits immunized with a KLH conjugated synthetic peptide between 16-46 amino acids from the N-terminal region of human UCHL1.

Dilution

WB~~1:1000
 IHC-P~~1:10~50
 IF~~1:10~50
 FC~~1:10~50

Format

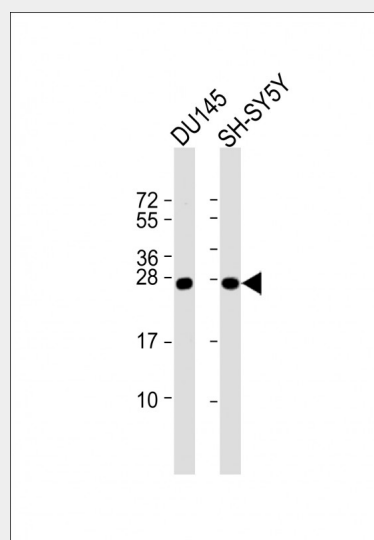
Purified polyclonal antibody supplied in PBS with 0.09% (W/V) sodium azide. This antibody is prepared by Saturated Ammonium Sulfate (SAS) precipitation followed by dialysis against PBS.

Storage

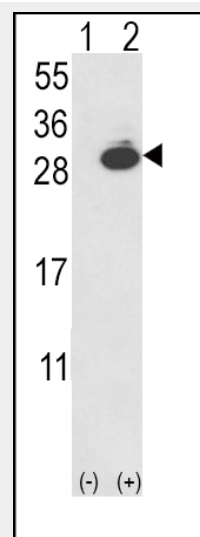
Maintain refrigerated at 2-8°C for up to 6 months. For long term storage store at -20°C in small aliquots to prevent freeze-thaw cycles.

Precautions

UCHL1 Antibody (N-term) is for research use only and not for use in diagnostic or therapeutic procedures.



All lanes : Anti-UCHL1 Antibody (V31) at 1:1000 dilution Lane 1: DU145 whole cell lysate Lane 2: SH-SY5Y whole cell lysate Lysates/proteins at 20 µg per lane. Secondary Goat Anti-Rabbit IgG, (H+L), Peroxidase conjugated at 1/10000 dilution. Predicted band size : 25 kDa Blocking/Dilution buffer: 5% NFDM/TBST.



Western blot analysis of UCHL1 (arrow) using rabbit polyclonal UCHL1-V31 (Cat. #AP2126a). 293 cell lysates (2 ug/lane) either nontransfected (Lane 1) or transiently transfected with the UCHL1 gene (Lane 2) (Origene Technologies).

UCHL1 Antibody (N-term) - Protein Information

Name UCHL1

Function

Ubiquitin-protein hydrolase involved both in the processing of ubiquitin precursors and of ubiquitinated proteins. This enzyme is a thiol protease that recognizes and hydrolyzes a peptide bond at the C-terminal glycine of ubiquitin. Also binds to free monoubiquitin and may prevent its degradation in lysosomes. The homodimer may have ATP-independent ubiquitin ligase activity.

Cellular Location

Cytoplasm. Endoplasmic reticulum membrane; Lipid-anchor. Note=About 30% of total UCHL1 is associated with membranes in brain

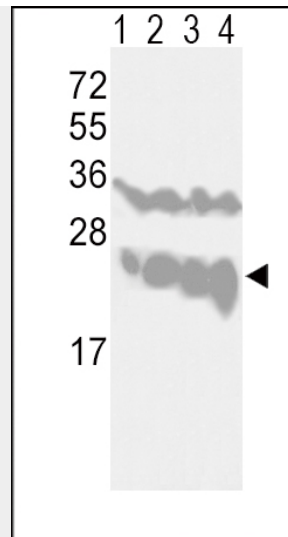
Tissue Location

Found in neuronal cell bodies and processes throughout the neocortex (at protein level). Expressed in neurons and cells of the diffuse neuroendocrine system and their tumors Weakly expressed in ovary. Down-regulated in brains from Parkinson disease and Alzheimer disease patients

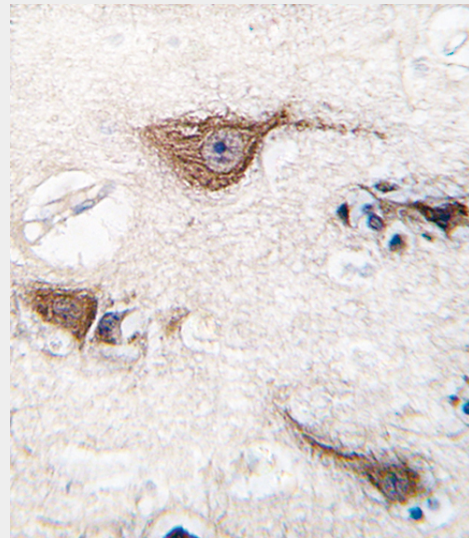
UCHL1 Antibody (N-term) - Protocols

Provided below are standard protocols that you may find useful for product applications.

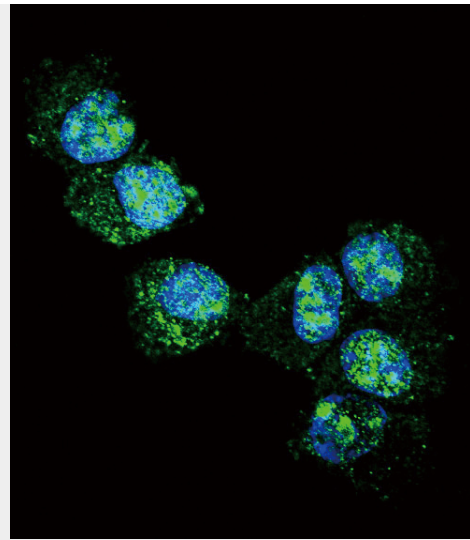
- [Western Blot](#)
- [Blocking Peptides](#)
- [Dot Blot](#)
- [Immunohistochemistry](#)
- [Immunofluorescence](#)
- [Immunoprecipitation](#)
- [Flow Cytometry](#)
- [Cell Culture](#)



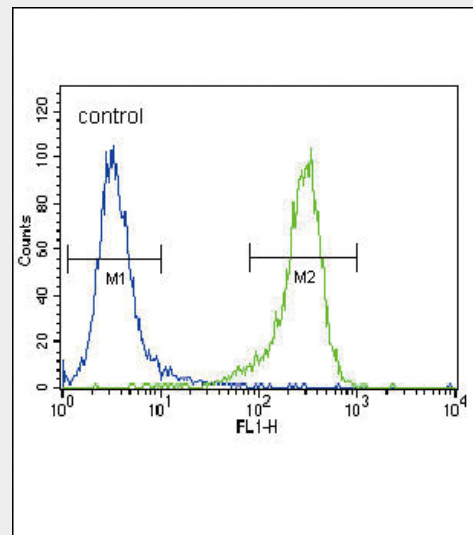
Western blot analysis of UCHL1-V31 (Cat. #AP2126a) in CEM(lane 1), Jurkat(lane 2), Y79(lane 3) cell line and mouse brain tissue(lane 4) lysates (35ug/lane). UCHL1 (arrow) was detected using the purified Pab.



Formalin-fixed and paraffin-embedded human brain tissue reacted with UCHL1 (Park5) antibody (N-term) (Cat.#AP2126a), which was peroxidase-conjugated to the secondary antibody, followed by DAB staining. This data demonstrates the use of this antibody for immunohistochemistry; clinical relevance has not been evaluated.



Confocal immunofluorescent analysis of UCHL1 Antibody (N-term)(Cat#AP2126a) with NCI-H460 cell followed by Alexa Fluor 488-conjugated goat anti-rabbit IgG (green).DAPI was used to stain the cell nuclear (blue).



UCHL1 Antibody (N-term) (Cat. #AP2126a) flow cytometric analysis of NCI-H460 cells (right histogram) compared to a negative control cell (left histogram).FITC-conjugated goat-anti-rabbit secondary antibodies were used for the analysis.

UCHL1 Antibody (N-term) - Background

UCHL1 is a member of a gene family whose products hydrolyze small C-terminal adducts of ubiquitin to generate the ubiquitin monomer. Expression of UCHL1 is highly specific to neurons and to cells of the diffuse neuroendocrine system and their tumors. It is present in all neurons (Doran et al., 1983 [PubMed 6343558]).

UCHL1 Antibody (N-term) - References

Maraganore, D.M., et al., *Mov Disord* 18(6):631-636 (2003). Nishikawa, K., et al., *Biochem. Biophys. Res. Commun.* 304(1):176-183 (2003). Liu, Y., et al., *Cell*

111(2):209-218 (2002). Caballero, O.L., et al.,
Oncogene 21(19):3003-3010 (2002). Saigoh, K.,
et al., Nat. Genet. 23(1):47-51 (1999).