

## ORNT2 Antibody (Center)

Peptide Affinity Purified Rabbit Polyclonal Antibody (Pab)

Catalog # AP18166c

### Specification

#### ORNT2 Antibody (Center) - Product Information

Application	WB,E
Primary Accession	<a href="#">Q9BXI2</a>
Other Accession	<a href="#">NP_114153.1</a>
Reactivity	Human
Host	Rabbit
Clonality	Polyclonal
Isotype	Rabbit Ig
Clone Names	RB25634
Calculated MW	32580
Antigen Region	78-107

#### ORNT2 Antibody (Center) - Additional Information

Gene ID 83884

#### Other Names

Mitochondrial ornithine transporter 2, Solute carrier family 25 member 2, SLC25A2, ORNT2

#### Target/Specificity

This ORNT2 antibody is generated from rabbits immunized with a KLH conjugated synthetic peptide between 78-107 amino acids from the Central region of human ORNT2.

#### Dilution

WB~~1:1000

#### Format

Purified polyclonal antibody supplied in PBS with 0.09% (W/V) sodium azide. This antibody is purified through a protein A column, followed by peptide affinity purification.

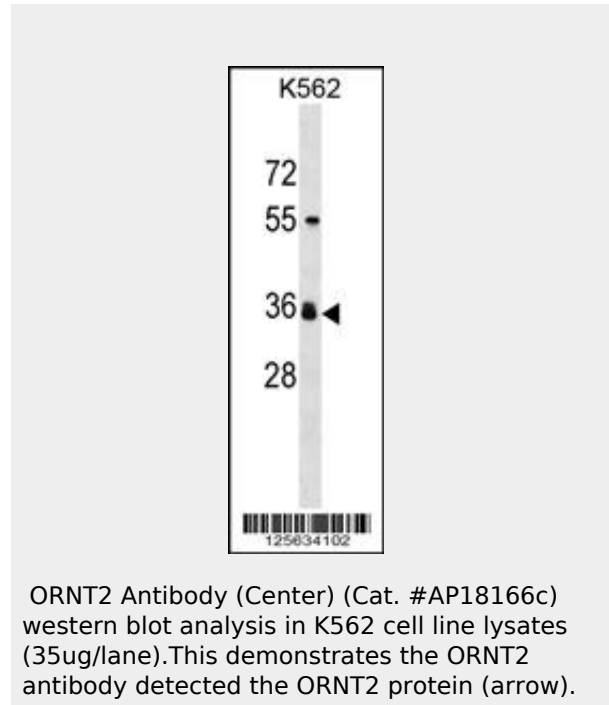
#### Storage

Maintain refrigerated at 2-8°C for up to 6 months. For long term storage store at -20°C in small aliquots to prevent freeze-thaw cycles.

#### Precautions

ORNT2 Antibody (Center) is for research use only and not for use in diagnostic or therapeutic procedures.

#### ORNT2 Antibody (Center) - Protein Information



#### ORNT2 Antibody (Center) - Background

Located between the protocadherin beta and gamma gene clusters on chromosome 5, this intronless gene encodes a protein that is highly similar to an ornithine transporter localized in the mitochondrial inner membrane. The encoded protein most likely plays a role in metabolism as a mitochondrial transport protein.

#### ORNT2 Antibody (Center) - References

Trynka, G., et al. Gut 58(8):1078-1083(2009)  
Fiermonte, G., et al. J. Biol. Chem. 278(35):32778-32783(2003)  
Camacho, J.A., et al. Mol. Genet. Metab. 79(4):257-271(2003)  
Wu, Q., et al. Genome Res. 11(3):389-404(2001)  
Porter, R.K. Biochim. Biophys. Acta 1459 (2-3), 356-362 (2000) :

**Name** SLC25A2

**Synonyms** ORNT2

**Function**

Ornithine transport across inner mitochondrial membrane, from the cytoplasm to the matrix.

**Cellular Location**

Mitochondrion inner membrane; Multi-pass membrane protein

**Tissue Location**

Expressed in liver, kidney, pancreas and cultured fibroblasts

**ORNT2 Antibody (Center) - Protocols**

Provided below are standard protocols that you may find useful for product applications.

- [Western Blot](#)
- [Blocking Peptides](#)
- [Dot Blot](#)
- [Immunohistochemistry](#)
- [Immunofluorescence](#)
- [Immunoprecipitation](#)
- [Flow Cytometry](#)
- [Cell Culture](#)