

## ODC1 Antibody (C-term)

Peptide Affinity Purified Rabbit Polyclonal Antibody (Pab)

Catalog # AP14027B

### Specification

#### ODC1 Antibody (C-term) - Product Information

Application	WB,E
Primary Accession	<a href="#">P11926</a>
Other Accession	<a href="#">P27117</a> , <a href="#">NP_002530.1</a>
Reactivity	Human
Predicted	Bovine
Host	Rabbit
Clonality	Polyclonal
Isotype	Rabbit Ig
Clone Names	RB34050
Calculated MW	51148
Antigen Region	323-352

#### ODC1 Antibody (C-term) - Additional Information

Gene ID 4953

#### Other Names

Ornithine decarboxylase, ODC, ODC1

#### Target/Specificity

This ODC1 antibody is generated from rabbits immunized with a KLH conjugated synthetic peptide between 323-352 amino acids from the C-terminal region of human ODC1.

#### Dilution

WB~~1:1000

#### Format

Purified polyclonal antibody supplied in PBS with 0.09% (W/V) sodium azide. This antibody is purified through a protein A column, followed by peptide affinity purification.

#### Storage

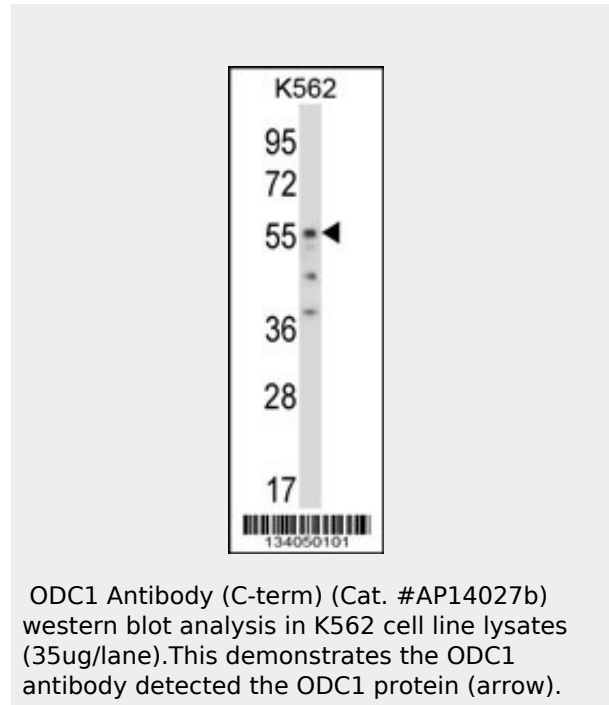
Maintain refrigerated at 2-8°C for up to 6 months. For long term storage store at -20°C in small aliquots to prevent freeze-thaw cycles.

#### Precautions

ODC1 Antibody (C-term) is for research use only and not for use in diagnostic or therapeutic procedures.

#### ODC1 Antibody (C-term) - Protein Information

Name ODC1



#### ODC1 Antibody (C-term) - Background

This gene encodes the rate-limiting enzyme of the polyamine biosynthesis pathway which catalyzes ornithine to putrescine. The activity level for the enzyme varies in response to growth-promoting stimuli and exhibits a high turnover rate in comparison to other mammalian proteins. Originally localized to both chromosomes 2 and 7, the gene encoding this enzyme has been determined to be located on 2p25, with a pseudogene located on 7q31-qter.

#### ODC1 Antibody (C-term) - References

Chaturvedi, R., et al. Gastroenterology 139(5):1686-1698(2010) Zell, J.A., et al. J. Natl. Cancer Inst. 102(19):1513-1516(2010) Geerts, D., et al. Int. J. Cancer 126(9):2012-2024(2010) Hughes, D., et al. Colorectal Dis (2010) In press : Grimminger, P.P., et al. Clin Lung Cancer 11(2):114-119(2010)

**Function**

Key enzyme of polyamine biosynthesis that converts ornithine into putrescine, which is the precursor for the polyamines, spermidine and spermine.

**ODC1 Antibody (C-term) - Protocols**

Provided below are standard protocols that you may find useful for product applications.

- [Western Blot](#)
- [Blocking Peptides](#)
- [Dot Blot](#)
- [Immunohistochemistry](#)
- [Immunofluorescence](#)
- [Immunoprecipitation](#)
- [Flow Cytometry](#)
- [Cell Culture](#)