

## DNA Size Marker, 100 bp Ladders (100-1,500 bp), Ready to use

02-420, 250 ul

The BioAcademia 100 bp DNA Ladder mixture is suitable for sizing linear double-stranded DNA fragments from 100 bp to 1.5 kbp as for sizing PCR products. The 500 bp band has increased intensity (100 ng/5 ul) to provide internal orientation. The mass of DNA in each band in other bands is provided (assuming a 50 ng/ 5  $\mu$ l load) for approximate quantification in comparably intense samples of similar size. To avoid annealing between the DNA bands, all the bands have blunt-ends.

**DNA ladders:** 100, 200, 300, 400,500, 600, 700, 800, 900, 1,000 and 1,500 bp (11 bands, see Figure below)

**Concentration:** 650 ng/5 ul

**Recommended volume of application per lane:** 5 ul

**Solution:** 10 mM Tris-HCl (pH 8.0), 1 mM EDTA, 0.015% bromophenol blue, 2.5% Ficoll-400, 0.017% SDS

**Storage:** For short period (~1 month) at 4°C, for longer period at -20°C

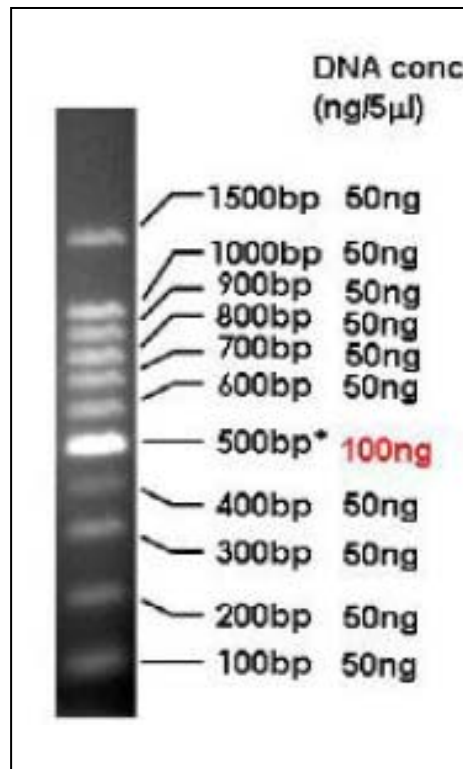


Figure. Electrophoretic pattern of 100 bp DNA ladders on 2% agarose gel in TAE buffer. Five ul of the DNA ladder solution was applied.

**Related Product:** 02-400 DNA Size Marker, 1 kbp Ladders (1-10 kbp), Ready to use