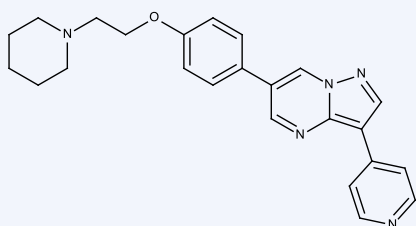


Stem Cell Effectors

Dorsomorphin



References

1. Watkins et al. (2003), Hedgehog signalling within airway epithelial progenitors and in small-cell lung cancer; Nature, 422 313
2. Hao et al (2008) Dorsomorphin, a selective small molecule inhibitor of BMP signaling, promotes cardiomyogenesis in embryonic stem cells. PLoS ONE 3 2904
3. Teo et al. (2005) Specific inhibition of CBP/beta-catenin interaction rescues defects in neuronal differentiation caused by a presenilin-1 mutation; Proc. Natl. Acad. Sci. USA 101 12171
4. Kumano et al. (2012) Generation of induced pluripotent stem cells from primary chronic myelogenous leukemia patient samples; Blood 119 6234
5. Tee and Proud (2000), DNA-damaging agents cause inactivation of translational regulators linked to mTOR signaling; Oncogene, 30 21
6. Hultman et al. (2009), Defects in ErbB-dependent establishment of adult melanocyte stem cells reveal independent origins for embryonic and regeneration melanocytes; PLoS Genet., 5 e1000544
7. Cabral et al. (2008) Reversine: a New and Promising Compound; Exp. Pathol. 2 7

Cyclopamine

Inhibits the Sonic Hedgehog (SHH) pathway and promotes stem cell differentiation¹

10-1082 1 mg, 5 mg

Dorsomorphin

AMPK inhibitor. Induces neuronal stem cell differentiation²

10-1029 5 mg, 25 mg

ICG-001

Wnt pathway inhibitor. Rescues defects in neuronal differentiation.³

10-4378 5 mg, 25 mg

LY294002

PI-3-Kinase inhibitor. Can be used to generate induced pluripotent stem cells.⁴

10-2150 5 mg, 25 mg

Mitomycin C

DNA damaging and cross-linking agent,⁵ Used in the preparation of feeder cells for embryonic stem cell culture.

10-1170 2 mg, 10 mg

MoTP

Induces melanocyte ablation. Useful for tracking melanocyte stem cell regeneration, recruitment and maintenance.⁶

10-1124 5 mg, 25 mg

Reversine

Reverses differentiated cells to multipotent stem cells in a variety of systems.⁷

10-1154 1 mg, 5 mg