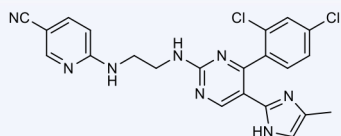


Selective Kinase Inhibitors



CHIR99021

Src-I1

Src-I1 is a potent and competitive dual site (ATP- and peptide-binding) Src kinase inhibitor (IC_{50} 's = 44 nM for Src and 88 nM for Lck).¹ Also inhibits VEGFR2 (IC_{50} = 320 nM).²

10-1020

5 mg, 25 mg

PD 325901

Selective Non-ATP-competitive MEK inhibitor (IC_{50} = 0.33nM)³. Inhibits growth and/or proliferation in a variety of cancer cells.⁴ Enhances self-renewal of embryonic stem cells

10-2161

5 mg, 25 mg

CHIR99021

Potent and selective inhibitor of glycogen synthase kinase-3 β (GSK3 β , IC_{50} = 5 nM) and GSK3 α (IC_{50} = 10 nM)⁵.

10-1279

1 mg, 5 mg

Y-27632 dihydrochloride

Specific inhibitor of ROCK family kinases.⁶ Enhances stem cell survival and proliferation in culture.⁷ Significantly improves freeze/thaw survival rate for human embryonic stem cells without influencing morphology, karyotype, cell surface markers, or differentiation potential.⁸

10-2301

1 mg, 5 mg

PP1

Potent and selective inhibitor of Src family tyrosine kinases. IC_{50} =5 nM (p65^{lck}), IC_{50} =6 nM(P59^{lyn}I), IC_{50} =170 nM (p60^{src}).⁹ Cell permeable.

10-1184

5 mg, 25 mg

References

1. Tian, *et al* (2001) *Biochem.* **40** 7084
2. Bain, *et al* (2007) *Biochem.J.* **408** 297
3. Sebolt-Leopold, *et al.* (2004) *Proc. Amer. Assoc. Cancer Res.* **45** 925
4. Ciuffreda, *et al.* (2009) *Neoplasia*, **11** 720
5. Bennett *et al.* (2002) *J. Biol. Chem.* **277** 30998
6. Ishizaki, *et al.* (2000) *Mol. Pharmacol.* **57** 976
7. Gauthaman, *et al.* (2010) *Stem Cell Rev.* **6** 86
8. Li, *et al.* (2008) *Stem Cells Dev.* **17** 1079
9. Hanke, *et al.* (1996) *J. Biol. Chem.* **271** 695