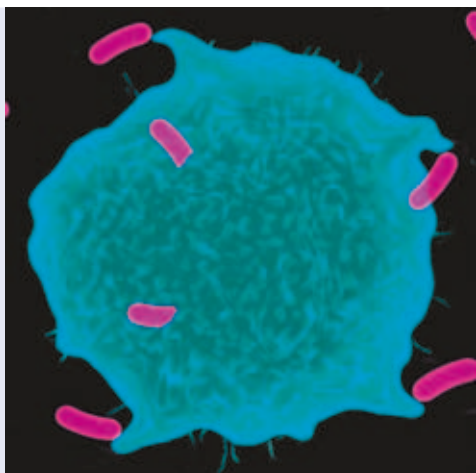
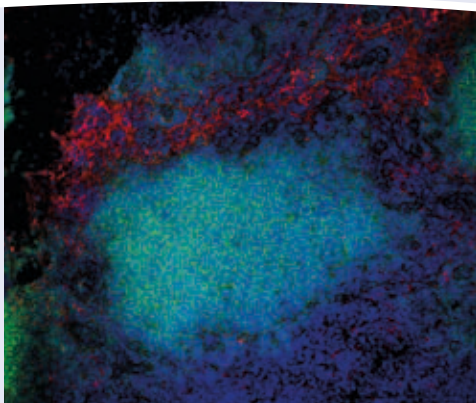


# Innate Immunity Macrophage Markers



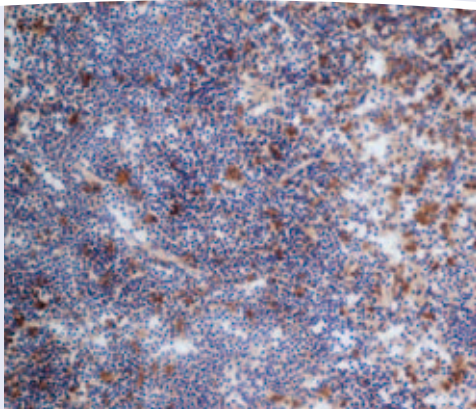
- ✓ Comprehensive Macrophage antibody range
- ✓ Guaranteed applications
- ✓ Highly skilled technical support
- ✓ Bulk manufacturing capability
- ✓ Custom services tailored to your needs



Mouse lymph node, immunofluorescence. Macrophages, red, stained with anti F4/80 (MCA497PE). B Cells, green, stained with anti CD79b (MCA1821A488); Nuclei, blue, DAPI

MCA497 anti F4/80 Clone CI:A3-1 is the best known marker for mature mouse macrophages and blood monocytes. Published in nearly 400 peer-reviewed articles and extensively characterized, MCA497 is available in twelve conjugates tested and guaranteed for Flow Cytometry, Western Blotting, Immunofluorescence and seven other applications.

MCA497 is also a useful tool for the study of microglia.



Mouse spleen cryosection, immunohistochemistry. Macrophages in the red pulp stained with anti CD68 (MCA1957)

MCA1957 detects surface macrosialin, the murine homologue of the human CD68, a heavily glycosylated transmembrane protein, which is specifically expressed by tissue macrophages.

Direct access to published images from our on-line datasheets, just look for the camera! 

# Macrophage Markers

The tables below contain some of our most popular antibodies against macrophage markers.

## Human

Specificity	Clone	Product Code*	Formats
(New!) AIM2	3B10	MCA5649	Pur
CD11b	ICRF44	MCA551	Pur., A647, A700, Az. Fr., Biot., FITC, RPE, RPE-A647
CD14	UCHM1	MCA596	Pur., A647, APC, Az. Fr., Biot., FITC, RPE
CD14	TUK4	MCA1568	Pur., A647, A700, Biot., FITC, LE, PB, RPE, RPE-A647, RPE-A750
CD14	MEM-18	MCA2185	Pur., FITC, RPE
CD14	61D3	MCA2804	RPE-Cy5, RPE-Cy5.5
CD163	EDHu-1	MCA1853	Pur., FITC
CD169	7-239	MCA2517	Pur., A488, A647, FITC, LE, RPE
CD200R	OX108	MCA2282	Pur., A488, A647, Biot., FITC, RPE
CD204	Poly	AHP563	Serum
CD206	15-2	MCA2155	Pur
CD209	MR-1	MCA2318	Pur., A488, A647, Biot., FITC, LE, RPE
CD31	WM59	MCA1738	Pur., A647, Biot., FITC, RPE
CD36	SMØ	MCA722	Pur., A647, Az. Fr., FITC
CD68	514H12	MCA1815	S/N
CD68	KiM7	MCA2375F	FITC
Dectin-1	BD6	MCA4662	Pur., A488, A647, FITC, RPE
Dectin-1	GE2	MCA4661	Pur., A488, A647, FITC, LE, RPE
Macrophage	MAC387	MCA874	Pur., A488, FITC, LE, RPE

## Mouse

Specificity	Clone	Product Code*	Formats
CD11b	M1/70.15	MCA74	Pur., A488, A647, A700, Biot., FITC, LE, RPE, RPE-A647, RPE-A750, RPE-Cy5
CD11b	5C6	MCA711	Pur., FITC, LE, RPE
CD115	604B5 2E11	MCA1898	Pur., Az. Fr., RPE,
CD169	MOMA-1	MCA947	S/N, A647, FITC
CD169	3D6.112	MCA884	Pur., FITC, LE
CD200R	OX-110	MCA2281	Pur., A488, A647, Biot., FITC, LE, RPE
CD204	2F8	MCA1322	Pur., A488, A647, Biot., FITC, LE, RPE
CD206	MR5D3	MCA2235	Pur., A488, A647, Biot., FITC, LE, RPE
CD31	ER-MP12	MCA2388	Pur., A488, A647, Biot., RPE, RPE-A647
CD36	MF3	MCA2748	Pur., A488, A647, FITC, LE, RPE
CD68	FA-11	MCA1957	Pur., A488, A647, A700, Az. Fr., Biot., FITC, RPE
Dectin-1	2A11	MCA2289	Pur., A647, Biot., FITC, LE, RPE
Dectin-2	D2.11E4	MCA2415	Pur., A488, A647, Biot., FITC, LE, RPE
F4/80	Cl:A3-1	MCA497	Pur., A488, A647, A700, APC, Biot., FITC, LE, PB, RPE, RPE-A647, RPE-A750, S/N
Ly-6B.2	7/4	MCA771	Pur., A647, A700, Biot., FITC, LE, RPE
Ly-6C	ER-MP20	MCA2389	Pur., A488, A647, Biot., RPE
MARCO	ED31	MCA1849	Pur., FITC, RPE
TREM-1	L5-B8.2A12.3A12	MCA2578	Pur., A488, A647, FITC, LE, RPE
(New!) TREM-2	78.18	MCA4772	Pur., FITC, LE

## Rat

Specificity	Clone	Product Code*	Formats
CD11b	OX-42	MCA275	Pur., A488, A647, A700, Biot., FITC, LE, PB, RPE, RPE-A647
CD11b	ED7	MCA618R	Pur.
CD11b	ED8	MCA619	Pur., FITC, RPE
CD115	604B5 2E11	MCA1898	Pur., Az. Fr., RPE
CD163	ED2	MCA342	Pur., A647, Biot., FITC, LE, RPE
CD169	ED3	MCA343	Pur.
CD172a	OX41	MCA274	Pur., Az. Fr., Biot, FITC, RPE
CD172a	ED9	MCA620	Pur., FITC, RPE
CD200R1	OX-102	MCA1959	Pur., Biot., FITC, LE, RPE
CD31	TLD-3A12	MCA1334	Pur., A488, A647, Biot., FITC, LE, RPE
CD68	ED1	MCA341	Pur., A488, A647, A700, Biot., FITC, RPE

## Multicolor Reagents

Specificity	Clone	Product Code*	Formats
Human CD45/CD14	F10-89-4/UCHM1	DC008	FITC/RPE
Mouse IgG2a/IgG2a	Negative Control	DC013	FITC/RPE
Mouse Ly6C/CD31	ERMP20/ERMP12	DC053	A488/RPE
Mouse Ly6C/CD31	ERMP20/ERMP12	DC054	A488/RPE-A647
Mouse CD11b/CD115	M1/70.15 / 604B5 2E11	DC055	A488/RPE
Mouse Ly6C/CD115/CD11b	ERMP20/604B5 2E11/M1/70.15	TC015	A488/RPE/RPE-A647
Mouse Ly6C/CD115/CD31	ERMP20/604B5 2E11/ERMP12	TC016	A488/RPE/RPE-A647
Mouse Ly6C/CD115/CD31	ERMP20/604B5 2E11/ERMP12	TC017	A488/RPE/A647
Mouse Ly6C/CD115/CD11b/CD31	ERMP20/604B5 2E11/M1/70.15/ERMP12	QC001	A488/RPE/RPE-A647/A647

Abbreviations: APC= allophycocyanin, A405 = Alexa Fluor® 405, A488 = Alexa Fluor® 488, A647 = Alexa Fluor® 647, A700 = Alexa Fluor® 700, A750 = Alexa Fluor® 750, Az. Fr. = Azide Free, Biot. = Biotin, LE = Low endotoxin, PB= Pacific Blue™, Pur. = Purified, S/N=Supernatant  
\* See website for each format's product code.

**North & South America** Tel: +1 919 878 7978  
Fax: +1 919 878 3751  
Email: sales.us@abdserotec.com

**Europe** Tel: 00800 CALL 4ABD  
(00800 2255 4223)  
Fax: 00800 2FAX 2ABD  
(00800 2329 2223)  
Email: sales.eu@abdserotec.com

**Worldwide** Tel: +44 1865 852 700  
Fax: +44 1865 852 739  
Email: sales@abdserotec.com

[www.abdserotec.com](http://www.abdserotec.com)

