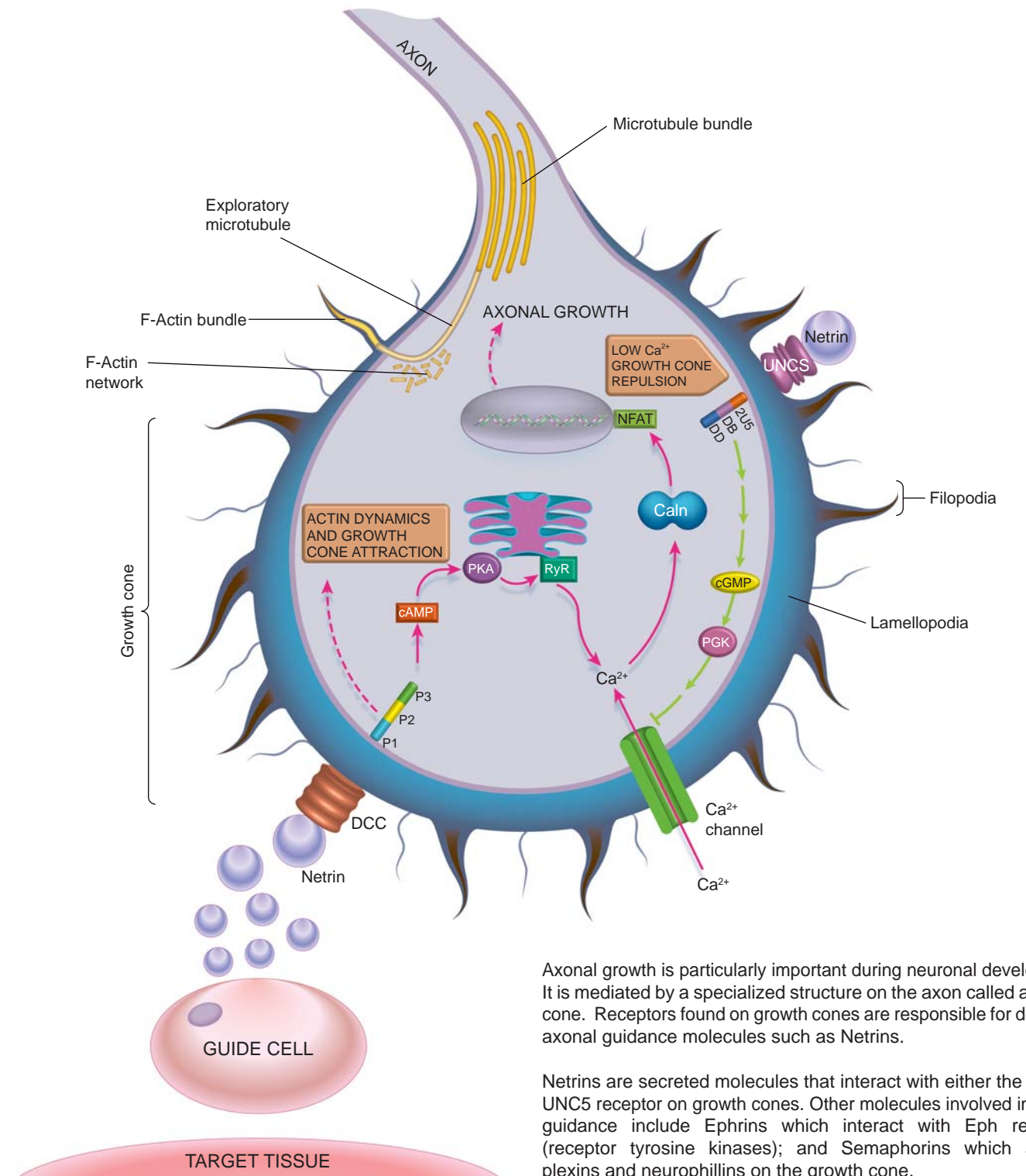


Axonal Growth Markers

Specificity	Human Antibodies	Mouse Antibodies	Rat Antibodies
Axonal markers			
ACETYLCHOLINESTERASE	0030-2269, OBT1641, MCA2900Z	MCA2900Z	
ACTIVIN	5323-0707, MCA2535Z		MCA2535Z
AGGRECAN	0195-8050, MCA1451, MCA1452, MCA1453, MCA1454		MCA1451
ALPHA CATENIN	OBT1731, MCA4410Z		
AMPHIREGULIN	0300-0007		
ARTEMIN	AHP1410, AHP1275*		
BETA CATENIN	OBT1683	OBT1683	
BETACELLULIN	AHP1276		
CALCINEURIN (Caln)	1717-0909	1717-0909	1717-0909
CaMKII	AHP1273, AHP893*, AHP894*, MCA2976Z	AHP1273, AHP893*, AHP894*	AHP1273, AHP893*, AHP894*
CD49d	AHP1225, MCA2503*, MCA697, MCA923*	MCA1230G*, MCA2082*, MCA2294*	MCA697, MCA1383
CD56	MCA2693, MCA591*, MCA2046*		
CD71	MCA2776, MCA2775	MCA2474EL*, MCA2396*, MCA1033G*	MCA155G*
CD90	MCA90*	MCA02R, MCA47G*, MCA04G	MCA47G*
CD100	MCA1269*		
CD138	MCA2459*		
CD147	MCA1876*, MCA2882Z	MCA2283*	MCA729*
CD184	AHP443, AHP442	AHP443	
Cdk5 (C-TERMINAL)	AHP1270	AHP1270	AHP1270
CNTF	AHP1277*		AAR21*
COFILIN 2 (C-TERMINAL)	AHP1061	AHP1061	AHP1061
CYSTATIN C	MCA2675, MCA2676, MCA2639	AAM58	
DISC1	AHP1446, AHP1445	AHP1446, AHP1445	
EGF	AHP767*, 4220-0004, 4220-0346, 4220-0352	AAM52, 4220-0004, 4220-0346	4220-0346
EGF R	MCA1784*, MCA1785, MCA1789, AHP1372, AHP767, AHP1243, MCA2198, MCA2199, MCA455*	AHP1243	AHP1243
EPHRIN A	AHP1120, MCA3089Z, MCA4602Z		
EPHRIN B	HCA001, HCA025, AHP1229*, AHP1230*, AHP1231*, MCA3090Z, MCA3092Z, MCA3091Z	HCA001, HCA025, AHP1229*, AHP1230*, AHP1231*, MCA3090Z, MCA3092Z	AHP1229*, AHP1230*, AHP1231*, MCA3092Z
FGF 9			AAM17G*
FGF ACIDIC	AHP769*		
FGF BASIC	4460-0104, AHP1038*, MCA1400G, AHP380, 4460-4017		
FGF RECEPTOR	4460-6006	4460-6006	4460-6006
GAP43	AHP669, AHP902*	AHP669, AHP902*	AHP669, AHP902*
GDNF	AHP365G*		
GFR ALPHA 2	AHP479	AHP479	AHP479
GROWTH CONE		MCA1712	MCA1712
GSK3 BETA (pSer9)	AHP1233, MCA3152Z	AHP1233	AHP1233
GST 3	4690-5004		
Ki67	HCA053, HCA006, MCA289		
LAMININ	AHP420, 5620-0404, 5620-0436, MCA3230Z, MCA3231Z		5620-0404
NESTIN	OBT1611, OBT1610	6625-1010	6625-1010
NEURONAL CALCIUM SENSOR 1			0100-0190
OLIGODENDROCYTE	MCA1945	MCA1945	MCA1945
PDGF RECEPTOR	0100-0220, 7460-3104, AHP1326, MCA3331Z		OBT1137
RYANODINE RECEPTOR	OBT1818	OBT1818	OBT1818
TYROSINE HYDROXYLASE	AHP931, MCA2384, AHP910*, AHP912*, AHP368	AHP931, MCA2384, AHP910*, AHP911*, AHP912*, AHP368	AHP931, OBT1877, MCA2384, AHP910*, AHP911*, AHP912*
TRK A	7045-7040		
VEGF	AHP831*, OBT1647	AAM51	
VIMENTIN	HCA032, MCA862, OBT3104, MCA3544Z, 9550-0384		MCA86, 9550-0384

* Multiple formats available
Phospho-specific antibody

LIT.AXO.2009.2 © Copyright MorphoSys UK Ltd 2009. All rights reserved.
Published by MorphoSys UK Ltd, Endeavour House, Langford Lane, Langford Business Park, Kidlington, OX5 1GE
For research purposes only. Not for therapeutic or diagnostic use.



Axonal growth is particularly important during neuronal development. It is mediated by a specialized structure on the axon called a growth cone. Receptors found on growth cones are responsible for detecting axonal guidance molecules such as Netrins.

Netrins are secreted molecules that interact with either the DCC or UNC5 receptor on growth cones. Other molecules involved in axonal guidance include Ephrins which interact with Eph receptors (receptor tyrosine kinases); and Semaphorins which activate plexins and neurophilins on the growth cone.