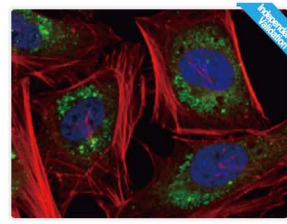
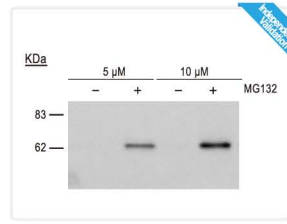


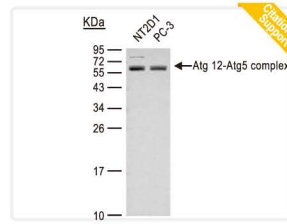
LC3 antibody [166AT1234]
(GTX17380)



SQSTM1 antibody [GT1478]
(GTX629890)



SQSTM1 (phospho Ser403) antibody
(GTX128171)

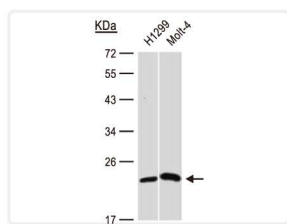


ATG5 antibody
(GTX113309)

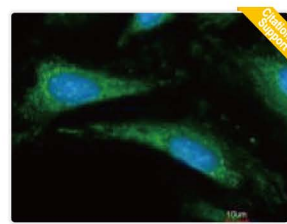
1 Independent Validation C Citation Support

C Citation

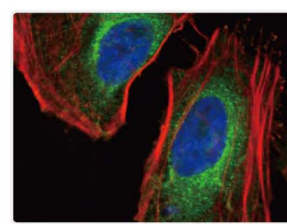
| Product Name | Clonality | Reactivity | Application | Cat. No. |
|----------------------------------|-----------|-----------------------------|-----------------------------------|-----------|
| ATG4B antibody | Rb pAb | Hu | IHC-P, WB | GTX115678 |
| ATG5 antibody | Rb pAb | Hu | ICC/IF, WB | GTX113309 |
| ATG7 antibody [N3C2], Internal | Rb pAb | Ms | WB | GTX113613 |
| ATG9A antibody | Rb pAb | Hu, Ms, Rat | ICC/IF, IHC-P, IP, WB | GTX128427 |
| ATG10 antibody | Rb pAb | Hu | WB | GTX129097 |
| ATG12 antibody | Rb pAb | Hu, Ms, Rat | IHC-P, IP, WB | GTX124181 |
| ATG13 antibody | Rb pAb | Hu, Ms | IHC-P, WB | GTX123970 |
| ATG13 antibody | Rb pAb | Hu | IHC-P, WB | GTX122766 |
| ATG14 antibody | Rb pAb | Hu | IHC-P, WB | GTX128166 |
| ATG14 antibody | Rb pAb | Hu | WB | GTX119950 |
| ATG16L1 antibody | Rb pAb | Hu, Ms | ICC/IF, IHC-P, WB | GTX129098 |
| FIP200 antibody | Rb pAb | Hu | ICC/IF, WB | GTX129093 |
| FLIP antibody [N1C1] | Rb pAb | Hu | IHC-P, WB | GTX113047 |
| BNIP3 antibody [ANa40] | Ms mAb | Hu | ELISA, ICC/IF, IP, WB | GTX10433 |
| BNIP3L antibody | Rb pAb | Hu, Ms | ICC/IF, IHC-P, WB | GTX111876 |
| FIS1 antibody [GT9810] | Ms mAb | Hu | ICC/IF, WB | GTX631209 |
| GABARAPL1 antibody | Rb pAb | Hu | ICC/IF, WB | GTX129277 |
| GABARAPL2 antibody | Rb pAb | Hu | IHC-P, WB | GTX102006 |
| HMGB1 antibody | Rb pAb | Hu, Ms, Rat | ICC/IF, IHC-P, WB | GTX112959 |
| HMGB1 antibody [GT383] | Ms mAb | Hu, Ms, Rat | IHC-P, WB | GTX628834 |
| LC3B antibody | Rb pAb | Hu, Ms, Pig, Rat | FACS, ICC/IF, IP, WB | GTX127375 |
| mTOR antibody [C3], C-term | Rb pAb | Hu, Ms, Rat | ICC/IF, IHC-P, IP, WB, CHIP assay | GTX101557 |
| NBR1 antibody | Rb pAb | Hu, Ms | IHC-P, WB | GTX114539 |
| NDP52 antibody | Rb pAb | Hu | ICC/IF, IHC-P, IP, WB | GTX115378 |
| NDP52 antibody [GT422] | Ms mAb | Hu | ICC/IF, IP, WB | GTX630396 |
| NOD1 antibody [C2C3], C-term | Rb pAb | Hu | ICC/IF, WB | GTX108811 |
| Optineurin antibody | Rb pAb | Hu | ICC/IF, IHC-P, IP, WB | GTX105447 |
| PINK1 antibody [N3C3] | Rb pAb | Hu | ICC/IF, WB | GTX107851 |
| SQSTM1 antibody [GT1478] | Ms mAb | Hu, Ms | FACS, ICC/IF, WB | GTX629890 |
| SQSTM1 antibody [N3C1], Internal | Rb pAb | Hu, Ms, Rat, Zfsh, Honeybee | FACS, ICC/IF, IHC-P, IP, WB | GTX100685 |
| SQSTM1 (phospho Ser403) antibody | Rb pAb | Hu, Ms, Rat | FACS, IHC-P, WB | GTX128171 |
| ULK2 antibody [C2C3], C-term | Rb pAb | Hu, Ms | ICC/IF, IHC-P, WB | GTX111476 |
| UVRAG antibody, C-term | Rb pAb | Hu, Ms | ICC/IF, IHC, IHC-P, WB | GTX16333 |



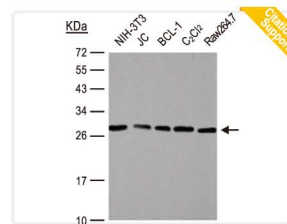
CRP antibody
(GTX101262)



Cyclophilin A antibody
(GTX104698)



LDH-A antibody
(GTX101416)



HMGB1 antibody
(GTX101277)

C Citation Support

C Citation

| Product Name | Clonality | Reactivity | Application | Cat. No. |
|------------------------------------|-----------|-------------|------------------------|-----------|
| C Reactive Protein antibody [N1C3] | Rb pAb | Hu | WB | GTX101262 |
| C Reactive Protein antibody [C1] | Ms mAb | Hu | Apuri, IHC, WB | GTX10026 |
| Cyclophilin A antibody [C1C3] | Rb pAb | Hu | ICC/IF, IHC-P, WB | GTX104698 |
| Cyclophilin A antibody [N1C3] | Rb pAb | Hu, Ms | IHC-P, WB | GTX113520 |
| Cyclophilin 40 antibody | Rb pAb | Hu, Ms | ICC/IF, IHC-P, WB | GTX104038 |
| HMGB1 antibody | Rb pAb | Hu, Ms, Rat | ICC/IF, IHC, IHC-P, WB | GTX101277 |
| LDHA antibody | Rb pAb | Hu, Ms, Rat | ICC/IF, IHC-P, WB | GTX101416 |
| LDHA antibody [AT1A4] | Ms mAb | Hu | ELISA, ICC/IF, WB | GTX50001 |
| RIP3 antibody | Rb pAb | Hu, Ms | ICC/IF, IHC-P, WB | GTX107574 |

CELL DEATH

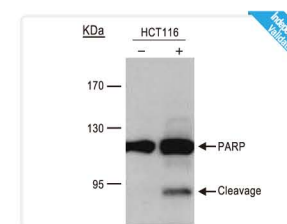
Your Expertise, Our Antibodies, Accelerated Discovery.

Contents

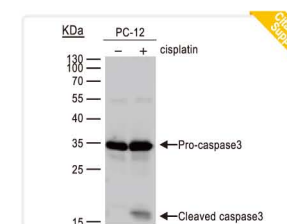
02 page Apoptosis

04 page Autophagy

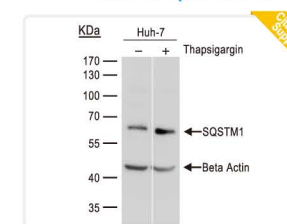
04 page Necrosis



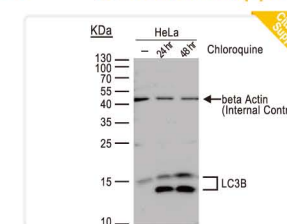
PARP1 antibody
(GTX112864)



Caspase-3 antibody
(GTX110543)



SQSTM1 antibody [N3C1],
Internal (GTX100685)



LC3B antibody
(GTX127375)

1 Independent Validation C Citation Support

Antibody panels for studying cell death

Product Bcl-2 Family Antibody Panel

Cat. No.
GTX300026

| Content | Reactivity | Application |
|-------------------------------|-------------|-----------------------|
| Bcl-2 antibody [N1N2], N-term | Hu, Ms, Rat | IHC-P, WB |
| MCL1 antibody | Hu | ICC/IF, IHC-P, WB |
| Bax antibody [N1N2], N-term | Hu, Rat | ICC/IF, IHC-P, IP, WB |
| Bcl-X antibody | Hu, Ms, Rat | ICC/IF, IHC-P, IP, WB |
| BAK antibody [N1N2], N-term | Hu | IHC-P, WB |
| Bad antibody | Hu | WB |
| PUMA antibody [C2C3], C-term | Hu | IHC-P, IP, WB |
| Rabbit IgG antibody (HRP) | Rb | Dot, ELISA, WB |

Product Caspase Antibody Panel 1

Cat. No.
GTX300110

| Content | Reactivity | Application |
|---------------------------|-------------|------------------------|
| Caspase 3 antibody | Hu, Ms, Rat | ICC/IF, IHC-P, IP, WB |
| Caspase 8 antibody | Hu | IHC-P, WB |
| Caspase 9 antibody | Hu, Rat | IP, WB |
| PAPR antibody | Hu, Ms | ICC/IF, WB, CHIP assay |
| Rabbit IgG antibody (HRP) | Rb | Dot, ELISA, WB |

Product IAPs Family Antibody Panel

Cat. No.
GTX300097

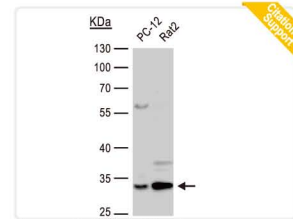
| Content | Reactivity | Application |
|---------------------------|-------------|-------------------|
| ciAP1 antibody | Hu, Ms, Rat | IHC-P, WB |
| ciAP2 antibody | Hu | IHC-P, WB |
| Survivin antibody | Hu, Ms | ICC/IF, IHC-P, WB |
| XIAP antibody | Hu | ICC/IF, IHC-P, WB |
| Rabbit IgG antibody (HRP) | Rb | Dot, ELISA, WB |

Product Autophagosome Marker Antibody

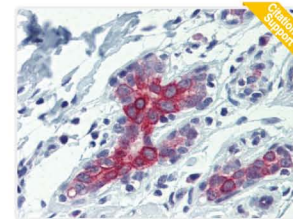
Cat. No.
GTX300079

| Content | Reactivity | Application |
|----------------------------------|-----------------------------|-----------------------------|
| Atg5 antibody | Hu | ICC/IF, WB |
| Atg12 antibody | Hu, Ms, Rat | IHC-P, IP, WB |
| SQSTM1 antibody [N3C1], Internal | Hu, Ms, Rat, Zfsh, Honeybee | FACS, ICC/IF, IHC-P, IP, WB |
| LC3B antibody | Hu, Ms, Rat, Pig | FACS, ICC/IF, IP, WB |
| Rabbit IgG antibody (HRP) | Rb | Dot, ELISA, WB |

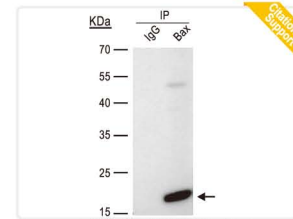
Hot Product Citation Support



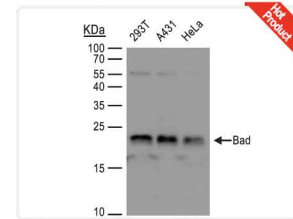
Annexin V antibody (GTX103250)



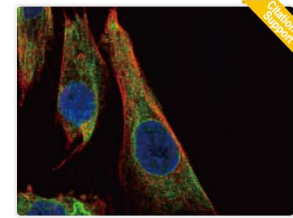
Bak antibody (GTX100063)



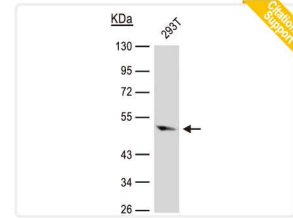
Bax antibody [N1N2], N-term (GTX109683)



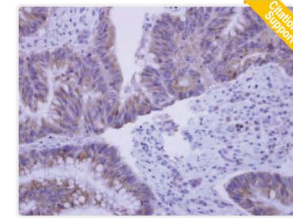
Bad antibody (GTX130108)



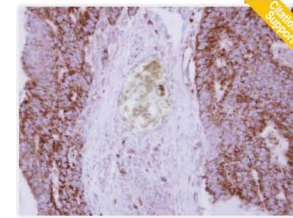
Bcl-X antibody (GTX105661)



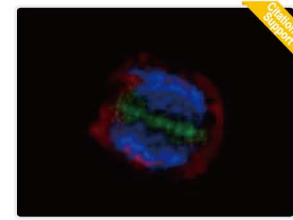
Caspase 9 antibody [N2C3] (GTX112888)



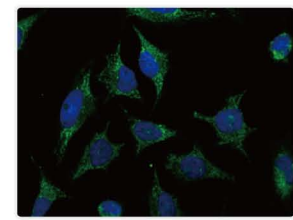
Caspase-8 antibody (GTX110723)



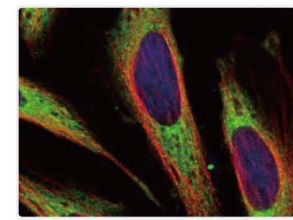
Cytochrome C antibody (GTX108585)



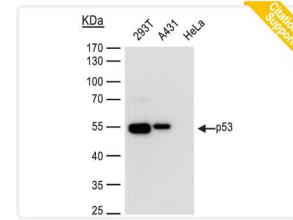
Survivin antibody (GTX100052)



XIAP antibody [C1C3] (GTX100496)



FADD antibody [N3C2], Internal (GTX116064)



p53 antibody [D01] (GTX70214)

Citation

| Product Name | Clonality | Reactivity | Application | Cat. No. |
|-------------------------------------|-----------|------------------|--------------------------------|-----------|
| AIF antibody [N1C1] | Rb pAb | Hu, Ms | ICC/IF, IHC-P, WB | GTX11336 |
| AIF antibody [N1N2], N-term | Rb pAb | Hu | ICC/IF, IHC-P, WB | GTX12399 |
| Annexin A1 antibody | Rb pAb | Hu, Ms | ICC/IF, IHC-P, WB | GTX113329 |
| Annexin V antibody | Rb pAb | Hu, Ms, Rat | ICC/IF, WB | GTX103250 |
| APAF1 antibody [C3], C-term | Rb pAb | Hu | IHC-P | GTX101067 |
| ASK1 antibody [C2C3-2], C-term | Rb pAb | Hu, Ms | IHC-P, WB | GTX107921 |
| Bad (phospho Ser112) antibody | Rb pAb | Hu, Ms, Rat | IHC, IP, WB | GTX59560 |
| Bad (phospho Ser136) antibody | Rb pAb | Hu, Ms, Rat | IHC-P, WB | GTX38680 |
| Bad antibody | Rb pAb | Hu | WB | GTX130108 |
| BAK antibody [N1N2], N-term | Rb pAb | Hu | IHC-P, WB | GTX100063 |
| Bax antibody [5B7] | Ms mAb | Ms | ICC/IF, WB | GTX23191 |
| Bax antibody [E63] | Rb mAb | Hu, Ms, Rat | ELISA, IHC-P, IP, WB | GTX61026 |
| Bax antibody [N1N2], N-term | Rb pAb | Hu, Rat | ICC/IF, IHC-P, IP, WB | GTX109683 |
| Bcl-2 antibody [E17] | Rb mAb | Hu, Ms, Rat | FACS, ICC/IF, IHC-P, IP, WB | GTX61005 |
| Bcl-2 antibody [N1N2], N-term | Rb pAb | Hu, Ms, Rat | IHC-P, WB | GTX100064 |
| BCL2L10 antibody [N1C3] | Rb pAb | Hu | ICC/IF, IHC-P, WB | GTX113911 |
| BCL2L10 antibody [N2C2], Internal | Rb pAb | Hu | ICC/IF, IHC-P, WB | GTX111872 |
| BCL2L12 antibody | Rb pAb | Hu | IHC-P, WB | GTX112088 |
| BCL2L15 antibody | Rb pAb | Hu | ICC/IF, IHC-P, WB | GTX110988 |
| Bcl-X antibody | Rb pAb | Hu, Ms, Rat | ICC/IF, IHC-P, IP, WB | GTX105661 |
| Bcl-XL antibody [4A9] | Ms mAb | Hu | ICC/IF, WB | GTX84834 |
| Bcl-XS antibody | Rb pAb | Hu | IHC-P, WB | GTX124266 |
| Bid antibody [N1C3-2] | Rb pAb | Hu | ICC/IF, IHC-P, IP, WB | GTX110568 |
| Calpain 1 antibody | Rb pAb | Hu | FACS, ICC/IF, IHC-P, WB | GTX102350 |
| Calpain 2 antibody [N2C1], Internal | Rb pAb | Hu, Ms | FACS, ICC/IF, IHC-P, WB | GTX102499 |
| Caspase 1 antibody | Rb pAb | Hu | ICC/IF, IHC-P, WB | GTX111630 |
| Caspase 1 antibody [14F468] | Ms mAb | Hu, Ms, Rat | IHC, IHC-P, WB | GTX14367 |
| Caspase 2 antibody | Rb pAb | Hu | WB | GTX110542 |
| Caspase 2 antibody, Internal | Rb pAb | Hu | ELISA, FACS, IHC, IHC-P, WB | GTX82535 |
| Caspase 3 (active) antibody | Rb pAb | Hu, Ms, Rat, Frt | ICC/IF, IHC, IHC-Fr, IHC-P, WB | GTX22302 |
| Caspase 3 (cleaved Asp175) antibody | Rb pAb | Hu, Ms, Rat | ELISA, IHC-P, WB | GTX86952 |
| Caspase 3 antibody | Rb pAb | Hu, Ms, Rat | ICC/IF, IHC-P, IP, WB | GTX110543 |
| Caspase 3 antibody | Rb pAb | Hu, Ms, Rat, Rb | IHC, IHC-P, IP, WB | GTX73090 |
| Caspase 4 (cleaved Gln81) antibody | Rb pAb | Hu | ELISA, WB | GTX86890 |
| Caspase 4 antibody | Rb pAb | Hu | IHC-P, WB | GTX113639 |

Citation

| Product Name | Clonality | Reactivity | Application | Cat. No. |
|--|-----------|------------------------------------|--|-------------|
| Caspase 4 antibody [N2N3] | Rb pAb | Hu | ICC/IF, IHC-P, WB | GTX100204 |
| Caspase 5 (cleaved Asp121) antibody | Rb pAb | Hu | ELISA, WB | GTX86923 |
| Caspase 5 (cleaved Ser331) antibody | Rb pAb | Hu | ELISA, WB | GTX86899 |
| Caspase 5 antibody | Rb pAb | Hu, Ms, Mk, Rat, Hm, Bov | WB | GTX59707 |
| Caspase 6 (active) antibody | Rb pAb | Hu, Ms, Rat | WB | GTX59553 |
| Caspase 6 antibody | Rb pAb | Hu, Ms, Rat | IHC, WB | GTX59708 |
| Caspase 7 (active) antibody | Rb pAb | Hu, Ms, Rat | ICC/IF, IHC, IP, WB | GTX22323 |
| Caspase 7 p11 subunit antibody | Rb pAb | Hu | IHC-P, WB | GTX123679 |
| Caspase 8 (active) antibody | Rb pAb | Ms, Rat | WB | GTX59607 |
| Caspase 8 antibody | Rb pAb | Hu | ICC/IF, IHC-P, WB | GTX110723 |
| Caspase 9 (active) antibody | Rb pAb | Hu | ICC/IF, IP, WB | GTX22324 |
| Caspase 9 antibody [N2C3] | Rb pAb | Hu, Rat | IP, WB | GTX112888 |
| Caspase 10 antibody | Rb pAb | Hu | ICC/IF, IHC-P, WB | GTX113148 |
| Caspase 11 antibody [17D9] | Rat mAb | Ms, Rat | IHC-Fr, IP, WB | GTX10454 |
| Caspase 12 antibody, N-term | Rb pAb | Hu, Ms, Rat | IHC-P, WB | GTX74429 |
| Caspase 14 antibody | Rb pAb | Hu | WB | GTX111888 |
| clAP1 antibody | Rb pAb | Hu, Ms, Rat | IHC-P, WB | GTX110087 |
| clAP1 antibody [GT422] | Ms mAb | Hu | WB | GTX629402 |
| clAP2 antibody [C1C3] | Rb pAb | Hu | IHC-P, WB | GTX113128 |
| Clusterin antibody | Rb pAb | Hu, Ms, Rat | IHC-P, WB | GTX101236 |
| Cytochrome C antibody | Rb pAb | Hu, Ms, Rat | ICC/IF, IHC-P, WB | GTX108585 |
| Cytochrome C antibody [7H8.2C12] | Ms mAb | Hu, Ms, Dm, Ptg, Rat, Hm, Hrs, Pgn | WB | GTX13575 |
| DAP3 antibody [N1C2-2] | Rb pAb | Hu | ICC/IF, IHC-P, WB | GTX113864 |
| Daxx antibody [N1N3] | Rb pAb | Hu | ICC/IF, IHC-P, WB | GTX112908 |
| Diablo antibody [N1C3] | Rb pAb | Hu | IHC-P, WB | GTX106746 |
| DR3 antibody | Rb pAb | Hu | IHC-P, WB | GTX105713 |
| EndoG antibody | Rb pAb | Hu, Ms, Rat | IHC-P, WB | GTX10522 |
| EndoG antibody [N1C3] | Rb pAb | Hu, Ms | WB | GTX114385 |
| FADD antibody [N3C2], Internal | Rb pAb | Hu | ICC/IF, IHC-P, WB | GTX116064 |
| Fas antibody | Rb pAb | Hu, Ms, Dog, Rat | FACS, IHC, WB | GTX13550 |
| Fas antibody [H11] | Rat mAb | Hu, Ms, Dog, Cat | FACS, ICC/IF, WB | GTX16104 |
| Fas Ligand antibody | Rb pAb | Hu | IHC, IHC-P, WB | GTX15285 |
| Fas Ligand antibody [N2C1], Internal | Rb pAb | Hu | WB | GTX100644 |
| FLIP antibody [N1C1] | Rb pAb | Hu | IHC-P, WB | GTX113047 |
| HSP27 antibody | Rb pAb | Hu, Ms, Rat | FACS, ICC/IF, IHC-P, IP, WB | GTX101145 |
| HSP27 antibody | Rb pAb | Hu | ICC/IF, IHC-P, IP, WB | GTX112964 |
| HSP70 1A antibody | Rb pAb | Hu, Ms | ICC/IF, IHC-P, IP, WB | GTX111088 |
| HSP70 1B antibody | Rb pAb | Hu | ICC/IF, IHC-P, WB | GTX106148 |
| Hsp90 alpha antibody | Rb pAb | Hu, Ms, Rat | ICC/IF, IHC-P, IP, WB | GTX109753 |
| HSP90 beta antibody | Rb pAb | Hu, Ms, Rat | ICC/IF, IHC-P, WB, ELISA-Ag | GTX101448 |
| ICAD (cleaved Asp224) antibody | Rb pAb | Hu | ELISA, IHC, IHC-P | GTX86959 |
| ICAD antibody [N1C3] | Rb pAb | Hu, Ms | WB | GTX103668 |
| ICAD antibody [N2C3] | Rb pAb | Hu | WB | GTX113416 |
| IRE1 (phospho Ser724) antibody [EPR5253] | Rb mAb | Hu | FACS, WB | GTX63722 |
| JNK1 antibody | Rb pAb | Hu, Ms | ICC/IF, IHC-P, WB | GTX101165 |
| Lamin A + C antibody | Rb pAb | Hu, Ms, Rat | ICC/IF, IHC-P, IP, WB | GTX101127 |
| Lamin A + C antibody | Rb pAb | Hu, Ms | IHC-P, WB | GTX111677 |
| MCL1 antibody | Rb pAb | Hu | ICC/IF, IHC-P, WB | GTX102026 |
| MDM2 antibody | Rb pAb | Hu | ICC/IF, IHC-P | GTX100653 |
| Nuclear Matrix Protein p84 antibody [5E10] | Ms mAb | Hu, Ms, Mk, Rat | ICC/IF, IHC, IP, WB, ChIP assay | GTX70220 |
| Nuclear Matrix Protein p84 antibody [5E10] (HRP) | Ms mAb | Hu | WB | GTX70220-01 |
| p53 antibody | Rb pAb | Hu | ICC/IF, IHC-P, IP, WB, ChIP assay | GTX102965 |
| p53 antibody [D01] | Ms mAb | Hu | ELISA, FACS, ICC/IF, IHC-Fr, IHC-P, IP, WB | GTX70214 |
| PARP antibody | Rb pAb | Hu, Ms | ICC/IF, WB, ChIP assay | GTX100573 |
| PARP antibody [GT6212] | Ms mAb | Hu | WB | GTX628836 |
| PARP antibody [N2C1], Internal | Rb pAb | Hu | ICC/IF, IHC-P, IP, WB, ChIP assay | GTX112864 |
| PUMA antibody | Rb pAb | Hu, Ms | ICC/IF, WB | GTX29643 |
| PUMA antibody [C2C3], C-term | Rb pAb | Hu | IHC-P, IP, WB | GTX109675 |
| Smac antibody [N1C3-3] | Rb pAb | Hu | IHC-P, WB | GTX113108 |
| Survivin antibody | Rb pAb | Hu | ICC/IF, IHC-P, IP, WB | GTX100052 |
| Survivin antibody | Rb pAb | Hu, Ms | ICC/IF, IHC-P, IP, WB | GTX100441 |
| TRADD antibody [N1], N-term | Rb pAb | Hu | ICC/IF, IHC-P, WB | GTX104695 |
| TRAF2 antibody | Rb pAb | Hu | ICC/IF, IHC-P, WB | GTX111138 |
| TRAIL antibody | Rb pAb | Hu | WB | GTX113043 |
| Transglutaminase 2 antibody [N3C3] | Rb pAb | Hu, Ms | ICC/IF, IHC-P, WB | GTX111702 |
| XIAP antibody [C1C3] | Rb pAb | Hu, Ms | ICC/IF, IHC-P, WB | GTX100496 |