

ENERGY METABOLISM AND BODY WEIGHT REGULATION – RESEARCH AND DIAGNOSTICS



IMMUNOASSAYS

We are proud that researchers working with BioVendor kits regularly present their results in the highest-ranking life science – examples inside. Do you also wish to publish in top journals? – Come and join us!

Most recent

BioVendor released new ELISA kits for the obesity research: Human Betatrophin, Insulin Receptor, PREF-1, Kallistatin, Lactoferrin, Decorin, Haptoglobin and our well known and patented “Method for Determining the Concentration of the Adipocytic Form of the Fatty Acid Binding Protein”. (EU patent granted in 2010).

When originality and quality matters:

BioVendor’s focus on keeping high quality standards combined with originality and novelty resulted in a lot of references of the use of such ELISAs as FGF-21, Adipocyte FABP, Omentin, Adiponectin, Resistin, Leptin (human, mouse, rat...).

...and history - 1998:

A long time ago in a laboratory far far away, BioVendor released the first commercial Leptin ELISA kit on the world market...

ENERGY METABOLISM AND BODY WEIGHT REGULATION - RESEARCH AND DIAGNOSTICS

► Pipeline

Human **Adipophilin** ELISA (ADRP)
Human **Apolipoprotein H** ELISA

Product Name	Sample Type	Cat. No.	Calibration Range
Adipocyte FABP Human ELISA	Serum, Plasma	RD191036200R	0.5 – 25 ng/ml
Adipocyte FABP Mouse ELISA	Serum	RD291036200R	0.78 – 50 ng/ml
Adiponectin Human ELISA (Competitive)	Serum, Plasma	RD195023100	0.1 – 10 µg/ml
Adiponectin Human ELISA, High Sensitivity (Sandwich)	Serum, Urine, Cerebrospinal fluid, Plasma	RD191023100	1 – 150 ng/ml
Adiponectin Mouse ELISA	Serum, Cell culture medium	RD293023100R	0.25 – 8 ng/ml
Adiponectin HMW Human ELISA	Serum, Plasma (heparin)	RSCHHMWADN096R	3.125 – 200 ng/ml
Adiponectin HMW Mouse/Rat ELISA	Serum	RSHAKMAN011R	3.13 – 200 ng/ml
Afamin Human ELISA	Serum, Plasma	RD194428100R	0.15 – 1.6 µg/ml
Angiopoietin-Like Protein 3 Human ELISA	Serum, Plasma	RD191092200R	12.5 – 400 ng/ml
Angiopoietin-Like Protein 3 Mouse/Rat ELISA	Serum, Plasma, Cell culture supernatant	RAG011R	0.016 – 1 ng/ml
Angiopoietin-Like Protein 4 Human ELISA	Serum, Plasma (EDTA, citrate)	RD191073200R	0.94 – 60 ng/ml
Angiopoietin-Like Protein 6 Human ELISA	Serum, Plasma, Cell culture supernatant	RAG001R	1.56 – 100 ng/ml
Apo B-48 Human ELISA	Serum, Plasma (EDTA, heparin)	RSHAKHB48R	2.5 – 160 ng/ml
Apolipoprotein D Human ELISA	Serum, Urine, Cerebrospinal fluid, Plasma	RD193118200R	0 – 10 ng/ml
Apolipoprotein M Human ELISA	Serum, Plasma	RD191129200R	0.313 – 10 ng/ml
Betatrophin Human ELISA	Plasma-Citrate, Plasma-EDTA, Plasma-Heparin, Serum	RD191347200R	0.31 – 20 ng/ml
Chemerin Human ELISA	Serum, Plasma	RD191136200R	0.25 – 8 ng/ml
CTRP1 Human ELISA	Serum, Plasma (citrate)	RD191153100R	3.13 – 100 ng/ml
CTRP5 Human ELISA	Serum, Plasma, Cell culture supernatant	RAG003R	0.001 – 5 µg/ml

BioVendor's ELISA kits in Obesity Publications

Teunissen CE, et al.
Novel diagnostic cerebrospinal fluid biomarkers for pathologic subtypes of frontotemporal dementia identified by proteomics. *Alzheimers Dement (Amst)*. 2016;2:86-94.

Burak MF, et al.
Development of a therapeutic monoclonal antibody that targets secreted fatty acid-binding protein aP2 to treat type 2 diabetes. *Sci Transl Med*. 2015 Dec 23; 7 (319):319ra205.

Tso AW, et al.
Serum adipocyte fatty acid binding protein as a new biomarker predicting the development of type 2 diabetes: a 10-year prospective study in a Chinese cohort. *Diabetes Care*. 2007 Oct; 30(10):2667-72. Epub 2007 Jul 9.

Xu A, et al.
Circulating adipocyte-fatty acid binding protein levels predict of the metabolic syndrome: a 5-year prospective study. *Circulation*. 2007 Mar 27; 115(12):1537-43.

ENERGY METABOLISM AND BODY WEIGHT REGULATION - RESEARCH AND DIAGNOSTICS

Product Name	Sample Type	Cat. No.	Calibration Range
CTRP9 Human ELISA	Plasma, Serum	RD191180200R	25 - 800 pg/ml
Decorin Human ELISA	Serum, Plasma (EDTA, citrate, heparin)	RD193324200R	0.125 - 4 ng/ml
DsbA-L Human ELISA	Plasma-Citrate, Plasma-EDTA, Plasma-Heparin, Serum, Tissue	RD191357200R	10 - 640 pg/ml
Epidermal FABP Human ELISA	Milk, Plasma, Serum, Tissue culture medium, Tissue extract, Urine	RD191060200R	0.5 - 40 ng/ml
ENPP1 Human ELISA	Serum, Plasma (Citrate)	RD191124200R	0.25 - 16 ng/ml
Fetuin-B Human ELISA	Serum, Plasma	RD191172200R	0.125 - 4 ng/ml
Fibroblast Growth Factor 19 Human ELISA	Serum, Plasma	RD191107200R	12.5 - 800 pg/ml
Fibroblast Growth Factor 21 Human ELISA	Serum, Plasma	RD191108200R	30 - 1920 pg/ml
Fibroblast Growth Factor 21 Mouse/Rat ELISA	Serum, Plasma, Cell culture medium	RD291108200R	40 - 2560 pg/ml
Ghrelin Acylated Canine Easy Sampling ELISA	Plasma	RA494062500R	2.0 - 250 pg/ml
Ghrelin Acylated Human Easy Sampling ELISA	Plasma	RA194062500R	2.0 - 250 pg/ml
Ghrelin Acylated Mouse/Rat Easy Sampling ELISA	Plasma	RA394062500R	2.0 - 250 pg/ml
Ghrelin Acylated Human ELISA	Plasma (EDTA+PHMB)	RA194062400R	1.96 - 250 pg/ml
Ghrelin Acylated Human ELISA	Cell culture medium	RA194062400-384R	2-250 pg/ml
Ghrelin Acylated Porcine ELISA	Plasma	RA594062400R	3.9 - 500 pg/ml
Ghrelin Acylated Rat ELISA	Plasma (EDTA+PHMB)	RA394062400R	1.96 - 250 pg/ml
Ghrelin Unacylated Human Easy Sampling ELISA	Plasma	RA194063500R	2.0 - 250 pg/ml
Ghrelin Unacylated Human ELISA	Plasma (EDTA)	RA194063400R	1.96 - 250 pg/ml
Ghrelin Unacylated Porcine ELISA	Plasma	RA594063400R	3.9 - 500 pg/ml
Ghrelin Unacylated Rat ELISA	Plasma (EDTA)	RA394063400R	1.96 - 250 pg/ml
Glucagon-Like Peptide-1 Human ELISA (Multispecies specificity)	Plasma	RSCYK160R	0.206 - 50 ng/ml
Heart FABP (FABP3) Human ELISA	Serum, Urine, Cerebrospinal fluid, Bronchoalveolar lavage, Amniotic fluid, Plasma	RD192247200R	20 - 1280 pg/ml

Ahola S, et al.
Modified Atkins diet induces subacute selective ragged-red-fiber lysis in mitochondrial myopathy patients.
EMBO Mol Med.
2016 Sep 19.

von Holstein-Rathlou S, et al.
FGF21 Mediates Endocrine Control of Simple Sugar Intake and Sweet Taste Preference by the Liver.
Cell Metab.
2016 Feb 9;
23 (2):335-43.

Laeger T, et al.
FGF21 is an endocrine signal of protein restriction.
J Clin Invest.
2014, Sep 2;
124(9):3913-22.

Mutamen A, et al.
Serum FGF21 increases with hepatic fat accumulation in pediatric onset intestinal failure.
J Hepatol.
2014 Jan;
60(1):183-90.

Bookout AL, et al.
FGF21 regulates metabolism and circadian behavior by acting on the nervous system.
Nat Med.
2013 Sep;
19(9):1147-52.

ENERGY METABOLISM AND BODY WEIGHT REGULATION - RESEARCH AND DIAGNOSTICS

Product Name	Sample Type	Cat. No.	Calibration Range
IL-1RACP / IL-1R3 Human ELISA		RD191518200R	
	Serum, Plasma (EDTA, citrate, heparin)	5 µl	100 - 3 200 pg/ml
Insulin Canine ELISA		RSHAKRIN012TR	
	Serum, Plasma	10 µl	188 - 12000 pg/ml
Insulin Hamster Standard		RSHASIN-001R	
			0.156 - 10 ng/ml
Insulin Human ELISA		RIS006R	
	Serum	50 µl	5.1 - 250 µIU/ml
Insulin Human ELISA (Multispecies specificity)		RSCYK060R	
	Serum	25 µl	0.137 - 100 ng/ml
Insulin Mouse ELISA, High Sensitive		RAI005R	
	Fluids, Serum, Plasma	10 µl	0.2 - 7 ng/ml
Insulin Rat ELISA, High Sensitive		RAI006R	
	Fluids, Serum, Plasma	10 µl	0.2 - 7 ng/ml
Insulin Receptor Human ELISA		RD191041200R	
	Plasma, Serum		0.47 - 30 ng/ml
Insulin Mouse ELISA, Ultra Sensitive		RAI007R	
	Fluids, Serum, Plasma	25 µl	0.025 - 1.5 ng/ml
Insulin Mouse/Rat ELISA		RA19004R	
	Serum, Plasma	50 µl	0.08 - 10 ng/ml
Insulin Mouse/Rat ELISA (5x96 wells)		RA19004-480R	
	Serum, Plasma	50 µl	0.08 - 10 ng/ml
Insulin Rat ELISA		RTC018R	
	Serum, Plasma	50 µl	0.156 - 10 ng/ml
Insulin Rat ELISA, Ultra Sensitive		RAI008R	
	Fluids, Serum, Plasma	25 µl	0.025 - 1.5 ng/ml
Insulin Mouse ELISA, Wide Range		RAI003R	
	Fluids, Serum, Plasma	5 µl	1 - 50 ng/ml
Insulin Rat ELISA, Wide Range		RAI004R	
	Fluids, Serum, Plasma	10 µl	1 - 50 ng/ml
Insulin Porcine ELISA		RSHAKRIN013TR	
	Serum, Plasma	10 µl	188 - 12000 pg/ml
Insulin Receptor Human ELISA		RD191041200R	
	Serum, Plasma	30 µl	0.47 - 30 ng/ml
Insulin (S-type) Mouse ELISA		RSHAKRIN011SR	
	Serum, Plasma, Cell culture medium	5 µl	78 - 5000 pg/ml
Interleukin-6 Human ELISA		RD194015200R	
	Serum, Urine, Cerebrospinal fluid, Bronchoalveolar lavage, Amniotic fluid, Plasma		1.5 - 80 pg/ml
Interleukin-6 Monkey ELISA		RAF073R	
	Baboon serum, Cynomolgus serum	50 µl	1.9 - 120 U/ml
Interleukin-6 Mouse ELISA		RAF071R	
	Serum, Plasma (EDTA, citrate), Cell culture supernatant	50 µl	31.3 - 2000 pg/ml
Interleukin-6 Porcine ELISA		RA19019R	
		100 µl	0.08 - 10.00 ng/ml

Owen BM, et al.
FGF21 contributes to neuroendocrine control of female reproduction.
Nat Med.
2013 Sep;
19(9):1153-6.

Szewczyk-Golec K, et al.
Supplementation Lowers Oxidative Stress and Regulates Adipokines in Obese Patients on a Calorie-Restricted Diet. Oxid Med Cell Longev.
2017; 2017:8494107.
doi: 10.1155/2017/8494107.

van Gemert WA, et al.
Association between changes in fat distribution and biomarkers for breast cancer. Endocr Relat Cancer.
2017 May 16. pii: ERC-16-0490. doi: 10.1530/ERC-16-0490.

Luque-Ramirez M, et al.
Sexual dimorphism in adipose tissue function as evidenced by circulating adipokine concentrations in the fasting state and after an oral glucose challenge.
Hum Reprod.
2013 Jul;
28 (7):1908-18.

ENERGY METABOLISM AND BODY WEIGHT REGULATION - RESEARCH AND DIAGNOSTICS

Product Name	Sample Type	Cat. No.	Calibration Range
Interleukin-6 Rat ELISA	Serum, Cell culture supernatant	RAF072R 50 µl	31 - 2000 pg/ml
Interleukin-33 Human ELISA	Cell culture supernatant, Plasma (heparin, citrate), Serum	RAF064R 50 µl	7.8 - 500 pg/ml
Irisin ELISA	Cell culture supernatant, Plasma, Serum	RAG018R	0.001 - 5 µg/ml
Kallistatin Human ELISA	Amniotic fluid, Bronchoalveolar lavage, Cerebrospinal fluid, Milk, Plasma (EDTA, citrate, heparin), Serum, Urine	RD191436200R Serum, Plasma, CSF, Amniotic fluid, Breast milk: 5 µl, BALF and urine: 35 µl	0.25 - 16 ng/ml
Lecithin-Cholesterol Acyltransferase Human ELISA	Serum, Plasma (EDTA, Citrate), Cerebrospinal fluid	RD191122200R Serum and plasma: 5µl CSF: 10µl	2.5 - 160 ng/ml
LECT2 Human ELISA	Plasma (EDTA, citrate, heparin), Serum	RD191370200R 5 µl	0.13 - 8 ng/ml
Leptin Human ELISA, Clinical Range	Serum, Plasma	RD191001100 35 µl	1 - 50 ng/ml
Leptin Mouse/Rat ELISA	Serum, Plasma, Cell culture medium	RD291001200R 5 µl	100 - 4000 pg/ml
Leptin Receptor Human ELISA	Serum, Plasma (EDTA, heparin)	RD194002100 35 µl	2 - 100 ng/ml
Lipocalin 2/NGAL Human ELISA	Serum, Plasma (EDTA), Urine, Stool	RD191102200R 10 µl	0.3 - 10 ng/ml
Monocyte Chemotactic Protein-1 Human ELISA, Sensitive	Serum, Plasma (EDTA, heparin), Cell culture supernatant	RAF081R 20 µl	15.6 - 1000 pg/ml
Monocyte Chemotactic Protein-1 Mouse ELISA	Serum, Cell culture medium	RAF080R 50 µl	15.6 - 1000 pg/ml
Obestatin Human ELISA	Serum, Plasma	RSCYK231R 20 µl	0.412 - 100 ng/ml
Obestatin Mouse/Rat ELISA	Plasma	RA19014R 25 µl	156.2 - 20000 pg/ml
Osteopontin Human ELISA	Cerebrospinal fluid, Milk, Serum, Plasma, Urine	RD191446200R Plasma: 10 µl, Serum: 20 µl, Urine, CSF, Breast milk: 5 µl	0.25 - 16 ng/ml
Omentin-1 Human ELISA	Serum, Plasma	RD191100200R 6 µl	2 - 64 ng/ml
Paraoxonase 1 Human ELISA	Plasma (citrate), Serum	RD191279200R 5 µl	1.25 - 80 ng/ml
PCSK9 Human ELISA	Serum, Plasma	RD191473200R	125 - 4000 pg/ml
PEDF Human ELISA	Serum, Plasma (citrate)	RD191114200R 10 µl	0.15 - 6 ng/ml
PREF-1 Human ELISA	Serum, Urine, Cerebrospinal fluid, Bronchoalveolar lavage, Amniotic fluid, Plasma	RD191519200R 5 µl	31.3 - 2000 pg/ml

von Eynatten M, et al.
Urinary adiponectin excretion: a vascular damage in type 2 diabetes.
Diabetes. 2009 Sep; 58(9):2093-9.

Hernández EÁ, et al.
Acute dietary fat intake initiates alterations in energy metabolism and insulin resistance. J Clin Invest. 2017 Feb 1; 127(2):695-708. doi: 10.1172/JCI89444.

Aleksandrova K, et al.
Circulating Omentin as a Novel Biomarker for Colorectal Cancer Risk: Data from the EPIC-Potsdam Cohort Study.
Cancer Res. 2016 Jul 1; 76 (13):3862-71.

Wittenbecher C, et al.
Omentin-1, Adiponectin, and the Risk of Developing Type 2 Diabetes.
Diabetes Care. 2016 Jun; 39 (6):e79-80.

Kataoka Y, et al.
Omentin prevents myocardial ischemic injury through AMPK- and Akt-dependent mechanisms.
J Am Coll Cardiol. 2014 Apr 11.

ENERGY METABOLISM AND BODY WEIGHT REGULATION - RESEARCH AND DIAGNOSTICS

Product Name	Sample Type	Cat. No.	Calibration Range
Progranulin Human ELISA	Serum, Plasma	RMEE103R	75 - 2500 pg/ml
Progranulin Mouse ELISA	Serum, Cell culture supernatant	RAG014R	0.125 - 8 ng/ml
Progranulin Rat ELISA	Serum, Cell culture supernatant	RAG015R	0.063 - 4 ng/ml
PYY Human ELISA	Plasma	RSCYK080R	0.14 - 100 ng/ml
PYY Rat ELISA	Plasma	RSCYK081R	0.14 - 100 ng/ml
RBP4 Human ELISA	Serum, Urine, Plasma, Cell culture supernatant	RAG005R	0.001 - 5 µg/ml
RBP4 Human ELISA, High Sensitivity	Serum, Urine, Plasma, Cell culture supernatant	RAG021R	0.39 - 25 ng/ml
RBP4 Mouse/Rat ELISA	Serum, Urine, Cell culture supernatant	RAG007R	0.188 - 12 ng/ml
Resistin Human ELISA	Serum, Plasma	RD191016100	1 - 50 ng/ml
Resistin Rat ELISA	Serum	RD391016200R	0.25 - 20 ng/ml
S100A12 Human ELISA	Serum, Bronchoalveolar lavage, Stool	RD191221200R	0.063 - 4 ng/ml
Soluble Receptor of Advanced Glycation End-Products Human ELISA	Serum, Plasma	RD191116200R	50 - 3200 pg/ml
TNF-alpha Human ELISA	Serum, Plasma, Urine, Cell culture supernatant	RAF128R	7.8 - 500 pg/ml
TNF-alpha Human ELISA, High Sensitivity	Sandwich ELISA, Biotin-labelled antibody	RAF145R	0.31 - 20.0 pg/ml
TNF-alpha Porcine ELISA	Sandwich ELISA, HRP-labelled antibody	RA19018R	0.02 - 20.00 ng/ml
TNF-alpha total Human ELISA	Serum, Plasma, Cell culture supernatant	RAF132R	23 - 1500 pg/ml
TNF-alpha Monkey ELISA	Baboon serum, Cynomolgus serum, Cell culture supernatant	RAF131R	28.1 - 1800 U/ml
TNF-alpha Mouse ELISA	Serum, Plasma, Cell culture supernatant	RAF129R	31.3 - 2000 pg/ml
TNF-alpha Rat ELISA	Serum, Cell culture supernatant	RAF130R	39.1 - 2500 pg/ml
Vaspin Human ELISA	Serum, Plasma (EDTA, heparin)	RD191097200R	0.032 - 2 ng/ml
Visfatin (NAMPT) Human ELISA	Serum	RAG004R	0.125 - 8 ng/ml
Visfatin (NAMPT) Human (IntraCellular) ELISA	Cell lysate	RAG008R	0.063 - 16 ng/ml

Sabry JH, et al.
Serum pigment epithelium derived factor as a new marker in the metabolic syndrome. *International Journal of Recent Scientific Research.* Vol.8, Issue,3, pp.15862-15866. 28th March,2017.

Hui E, et al.
Elevated circulating pigment epithelium-derived factor predicts the progression of diabetic nephropathy in patients with type 2 diabetes. *J Clin Endocrinol Metab.* 2014 Nov; 99 (11):E2169-77.

Famulla S, et al.
Pigment epithelium-derived factor (PEDF) is one of the most abundant proteins secreted by human adipocytes and induces insulin resistance and inflammatory signaling in muscle and fat cells. *Int J Obes (Lond).* 2011 Jun; 35(6):762-72.

Hung CS, et al.
Evaluation of circulating adipokines and abdominal obesity as predictors of significant myocardial ischemia using gated single-photon emission computed tomography. *PLoS One.* 2014;9 (5):e97710

ENERGY METABOLISM AND BODY WEIGHT REGULATION - RESEARCH AND DIAGNOSTICS

Product Name	Sample Type	Cat. No.	Calibration Range
Visfatin (NAMPT) Mouse/Rat ELISA	Serum	RAG009R	0.5 - 32 ng/ml
Zinc-Alpha-2-Glycoprotein Human ELISA	Serum, Plasma	RD191093100R	3 - 100 ng/ml

Kohara M, et al.
Association between circulating fibroblast growth factor 21 and mortality in end-stage renal disease.

PLoS One.
2017 Jun 5;
12(6):e0178971.
doi: 10.1371/journal.pone.0178971

Sahebkar A, et al.
Fibrate therapy and circulating adiponectin concentrations: a systematic review and meta-analysis of randomized placebo-controlled trials.

Atherosclerosis.
2013 Sep;
230 (1):110-20

Kadoglou NP, et al.
The relationship of novel adipokines, RBP4 and omentin-1, with carotid atherosclerosis severity and vulnerability.

Atherosclerosis.
2014 Aug;
235 (2):606-12

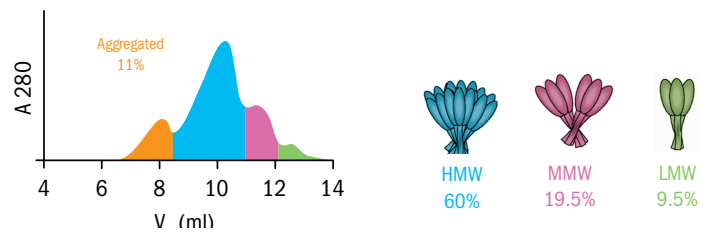


ENERGY METABOLISM AND BODY WEIGHT REGULATION - RESEARCH AND DIAGNOSTICS

PROTEINS

Adiponectin Oligomers

Gel filtration chromatogram of Recombinant Human Adiponectin (Flag-tag) from HEK 293 cells



Cat. No.	Description	Species	Source	Type
RD172036100	Adipocyte FABP, Tagless	Human	<i>E. coli</i>	Recombinant
RD165036050	Adipocyte FABP	Human	Adipose Tissue	Native
RD172029100	Adiponectin	Human	<i>E. coli</i>	Recombinant
RD172023100	Adiponectin	Human	HEK293	Recombinant
RD272023100	Adiponectin	Mouse	HEK293	Recombinant
RD572023100	Adiponectin	Porcine	HEK293	Recombinant
RD162023050	Adiponectin	Human	Pooled serum	Native
RD172023100-C	Adiponectin MMW and HMW oligomer-rich Human, Tagless	Human	HEK293	Recombinant
RD172112100	Adiponectin Globular	Human	<i>E. coli</i>	Recombinant
RD172112025	Adiponectin Globular	Human	<i>E. coli</i>	Recombinant
RD372023100	Adiponectin	Rat	HEK293	Recombinant
RD172023025-F	Adiponectin Solution	Human	HEK293	Recombinant
RD172023100-F	Adiponectin Solution	Human	HEK293	Recombinant
RD272587025	Adiponectin, Tag-free	Mouse	HEK293	Recombinant
RD272587100	Adiponectin, Tag-free	Mouse	HEK293	Recombinant
RD172091025	Adiponectin, Trimeric form	Human	HEK293	Recombinant
RD172091100	Adiponectin, Trimeric form	Human	HEK293	Recombinant
RD272091100	Adiponectin, Trimeric form	Mouse	HEK293	Recombinant
RD172161100	Adipophilin	Human	<i>E. coli</i>	Recombinant
RD172030100	Agouti-Related Protein	Human	<i>E. coli</i>	Recombinant
RD172092100	Angiopoietin-Like Protein 3	Human	<i>E. coli</i>	Recombinant
RD172092050-HEK	Angiopoietin-Like Protein 3	Human	HEK293	Recombinant
RD172073100	Angiopoietin-Like Protein 4	Human	<i>E. coli</i>	Recombinant
RD172073100-HEK	Angiopoietin-Like Protein 4	Human	HEK293	Recombinant
RD172073025	Angiopoietin-Like Protein 4	Human	<i>E. coli</i>	Recombinant
RD172306100	Angiopoietin-Like Protein 6	Human	<i>E. coli</i>	Recombinant
RD172101100	Apolipoprotein A5	Human	HEK293	Recombinant
RD172118100	Apolipoprotein D	Human	<i>E. coli</i>	Recombinant
RD172118100-HEK	Apolipoprotein D	Human	HEK293	Recombinant
RD172129100	Apolipoprotein M	Human	HEK293	Recombinant
RD172372100	Cell Death-Inducing DFFA-Like Effector C	Human	<i>E. coli</i>	Recombinant
RD172386050	CCL2 (MCP-1)	Human	<i>E. coli</i>	Recombinant
RD172394100	Collagen Triple Helix Repeat-Containing Protein 1	Human	<i>E. coli</i>	Recombinant
RD172394100-HEK	Collagen Triple Helix Repeat-Containing Protein 1	Human	HEK293	Recombinant
RD172153100	CTRP1	Human	<i>E. coli</i>	Recombinant

ENERGY METABOLISM AND BODY WEIGHT REGULATION - RESEARCH AND DIAGNOSTICS

Cat. No.	Description	Species	Source	Type
RD172154100	CTRP2	Human	<i>E. coli</i>	Recombinant
RD172121100	CTRP3	Human	<i>E. coli</i>	Recombinant
RD172156100	CTRP6	Human	<i>E. coli</i>	Recombinant
RD172157100	CTRP7	Human	<i>E. coli</i>	Recombinant
RD172179100	CTRP8	Human	<i>E. coli</i>	Recombinant
RD172180100	CTRP9A	Human	<i>E. coli</i>	Recombinant
RD172124100	ENPP1	Human	HEK293	Recombinant
RD172173100	Endothelial Lipase	Human	HEK293	Recombinant
RD172060100	Epidermal Fatty Acid Binding Protein, Tagless	Human	<i>E. coli</i>	Recombinant
RD172259100	FAM3B	Human	<i>E. coli</i>	Recombinant
RD172252100	Fatty Acid Binding Protein 12	Human	<i>E. coli</i>	Recombinant
RD272184100	Fibroblast Growth Factor 15	Mouse	<i>E. coli</i>	Recombinant
RD272184025	Fibroblast Growth Factor 15	Mouse	<i>E. coli</i>	Recombinant
RD172107100	Fibroblast Growth Factor 19	Human	<i>E. coli</i>	Recombinant
RD172108100	Fibroblast Growth Factor 21	Human	<i>E. coli</i>	Recombinant
RD272108100	Fibroblast Growth Factor 21	Mouse	<i>E. coli</i>	Recombinant
RD272108025-B	Fibroblast Growth Factor 21	Mouse	<i>E. coli</i>	Recombinant
RD172108100-B	Fibroblast Growth Factor 21, Tagless	Human	<i>E. coli</i>	Recombinant
RD272108100-B	Fibroblast Growth Factor 21, Tagless	Mouse	<i>E. coli</i>	Recombinant
RD172062100	Ghrelin-Acylated (Ghrelin-28)	Human		Synthetic
RD172243100	Glucagon-Like Peptide-1 Receptor	Human	<i>E. coli</i>	Recombinant
RD172202100	Growth Differentiation Factor-3	Human	<i>E. coli</i>	Recombinant
RD172230100	GRP-78	Human	<i>E. coli</i>	Recombinant
RD172247100	Heart Fatty Acid Binding Protein	Human	<i>E. coli</i>	Recombinant
RD172041100	Insulin Receptor	Human	HEK293	Recombinant
RD172015100	Interleukin-6	Human	<i>E. coli</i>	Recombinant
RD172203100	Interleukin-33	Human	<i>E. coli</i>	Recombinant
RD172246100	Intestinal Fatty Acid Binding Protein	Human	<i>E. coli</i>	Recombinant
RD172359100	Irisin	Human	<i>E. coli</i>	Recombinant
RD172122100	Lecithin-Cholesterol Acyltransferase	Human	<i>E. coli</i>	Recombinant
RD172122100-HEK	Lecithin-Cholesterol Acyltransferase	Human	HEK293	Recombinant
RD172001100	Leptin, Tagless	Human	<i>E. coli</i>	Recombinant
RD272001100	Leptin, Tagless	Mouse	<i>E. coli</i>	Recombinant
RD372001100	Leptin, Tagless	Rat	<i>E. coli</i>	Recombinant
RD172102050	Lipocalin-2/NGAL	Human	<i>E. coli</i>	Recombinant
RD172131100	Lipoprotein Lipase	Human	<i>E. coli</i>	Recombinant
RD172131100-HEK	Lipoprotein Lipase	Human	HEK293	Recombinant
RD172058100	Myostatin Propeptide, Tag free	Human	<i>E. coli</i>	Recombinant
RD172227100	Nesfatin-1	Human	<i>E. coli</i>	Recombinant
RD172276100	Neudesin	Human	<i>E. coli</i>	Recombinant
RD172100100	Omentin	Human	<i>E. coli</i>	Recombinant
RD172100025	Omentin	Human	<i>E. coli</i>	Recombinant
RD172446100	Osteopontin	Human	HEK293	Recombinant

ENERGY METABOLISM AND BODY WEIGHT REGULATION - RESEARCH AND DIAGNOSTICS

Cat. No.	Description	Species	Source	Type
RD172114100	Pigment Epithelium-Derived Factor	Human	<i>E. coli</i>	Recombinant
RD172114100-HEK	Pigment Epithelium-Derived Factor	Human	HEK293	Recombinant
RD172272100	Proghrelin	Human	<i>E. coli</i>	Recombinant
RD172047100	Resistin-Like Molecule-beta	Human	<i>E. coli</i>	Recombinant
RD272082100	Resistin-Like Molecule-gamma	Mouse	<i>E. coli</i>	Recombinant
RD172016300	Resistin	Human	<i>E. coli</i>	Recombinant
RD272016300	Resistin	Mouse	<i>E. coli</i>	Recombinant
RD372016300	Resistin	Rat	<i>E. coli</i>	Recombinant
RD172016301	Resistin, Tagless	Human	<i>E. coli</i>	Recombinant
RD172104100	Retinol Binding Protein 4	Human	<i>E. coli</i>	Recombinant
RD172116100	sRAGE	Human	<i>E. coli</i>	Recombinant
RD172116100-HEK	sRAGE	Human	HEK293	Recombinant
RD172221100	S100A12	Human	<i>E. coli</i>	Recombinant
RD172158100	Trefoil Factor 1	Human	<i>E. coli</i>	Recombinant
RD172159100	Trefoil Factor 2	Human	<i>E. coli</i>	Recombinant
RD172159025	Trefoil Factor 2	Human	<i>E. coli</i>	Recombinant
RD172160100	Trefoil Factor 3	Human	<i>E. coli</i>	Recombinant
RD372160100	Trefoil Factor 3	Rat	<i>E. coli</i>	Recombinant
RD172097100	Vaspin	Human	<i>E. coli</i>	Recombinant
RD172098100	Visfatin	Human	<i>E. coli</i>	Recombinant
RD172098100-B	Visfatin	Human	<i>E. coli</i>	Recombinant
RD172093100	Zinc-Alpha-2-Glycoprotein	Human	HEK293	Recombinant
RD172093025	Zinc-Alpha-2-Glycoprotein	Human	HEK293	Recombinant
RD162093025	Zinc-Alpha-2-Glycoprotein	Human	Human serum	Native

ANTIBODIES

Cat. No.	Description	Spec. React.	Type	Antigen
RD1820711004H3	Acylation Stimulating Protein	Human	Mouse MAb, Clone 4H3	Peptide
RD181037050	Adipocyte FABP	Human	Rabbit PAb	<i>E. coli</i>
RD184037100	Adipocyte FABP	Human	Goat PAb	<i>E. coli</i>
RD1820231005E4	Adiponectin	Human	Mouse MAb, Clone 5E4	HEK293
RD1820231007C11	Adiponectin	Human	Mouse MAb, Clone 7C11	HEK293
RD181023100	Adiponectin	Human	Rabbit PAb	HEK293
RD184023100-01	Adiponectin	Human	Sheep PAb	HEK293
RD581023100	Adiponectin	Porcine	Rabbit PAb	HEK293
RD584023100	Adiponectin	Porcine	Rabbit PAb	HEK293
RD181023220	Adiponectin	Human	Rabbit PAb	<i>E. coli</i>
RD281023100	Adiponectin	Murine	Rabbit PAb	HEK293
RD184023100	Adiponectin	Human	Goat PAb	HEK293
RD181161100	Adipophilin	Human	Rabbit Pab	<i>E. coli</i>
RD184161100	Adipophilin	Human	Sheep Pab	<i>E. coli</i>

ENERGY METABOLISM AND BODY WEIGHT REGULATION - RESEARCH AND DIAGNOSTICS

Cat. No.	Description	Spec. React.	Type	Antigen
RD181030050	Agouti-Related Protein	Human	Rabbit PAb	<i>E. coli</i>
RD181092100	Angiopoietin-Like Protein 3	Human	Rabbit PAb	<i>E. coli</i>
RD184092100	Angiopoietin-Like Protein 3	Human	Sheep PAb	<i>E. coli</i>
RD181073100-01	Angiopoietin-Like Protein 4	Human	Rabbit PAb	<i>E. coli</i>
RD184073100-01	Angiopoietin-Like Protein 4	Human	Sheep PAb	<i>E. coli</i>
RD184073100-02	Angiopoietin-Like Protein 4	Human	Sheep PAb	HEK293
RD181118100	Apolipoprotein D	Human	Rabbit PAb	<i>E. coli</i>
RD184118100	Apolipoprotein D	Human	Sheep PAb	<i>E. coli</i>
RD184129100	Apolipoprotein M	Human	Sheep PAb	HEK293
RD184328100	Apoptosis Inhibitor of Macrophage	Human	Sheep PAb	<i>E. coli</i>
RD181324100	Decorin	Human	Rabbit PAb	<i>E. coli</i>
RD184324100	Decorin	Human	Sheep PAb	<i>E. coli</i>
RD181124100	ENPP1	Human	Rabbit PAb	HEK293
RD184124100	ENPP1	Human	Sheep PAb	HEK293
RD181060100	Epidermal Fatty Acid Binding Protein	Human	Rabbit PAb	<i>E. coli</i>
RD184060100	Epidermal Fatty Acid Binding Protein	Human	Sheep PAb	<i>E. coli</i>
RD181259100	FAM3B	Human	Rabbit PAb	<i>E. coli</i>
RD184259100	FAM3B	Human	Sheep PAb	<i>E. coli</i>
RD181172100	Fetuin-B	Human	Rabbit PAb	HEK293
RD184172100	Fetuin-B	Human	Sheep PAb	HEK293
RD181107100	Fibroblast Growth Factor 19	Human	Rabbit PAb	<i>E. coli</i>
RD184107100	Fibroblast Growth Factor 19	Human	Sheep PAb	<i>E. coli</i>
RD181108100	Fibroblast Growth Factor 21	Human	Rabbit PAb	<i>E. coli</i>
RD184108100	Fibroblast Growth Factor 21	Human	Sheep PAb	<i>E. coli</i>
RD184108100-01	Fibroblast Growth Factor 21, Tag free	Human	Sheep PAb	<i>E. coli</i>
RD281108100	Fibroblast Growth Factor 21	Mouse	Rabbit PAb	<i>E. coli</i>
RD181109100-01	Fibroblast Growth Factor 23	Human	Rabbit PAb	<i>E. coli</i>
RD184230100	GRP-78	Human	Sheep PAb	<i>E. coli</i>
RD184041100	Insulin Receptor	Human	Sheep PAb	HEK293
RD181203100	Interleukin-33	Human	Rabbit PAb	<i>E. coli</i>
RD184203100	Interleukin-33	Human	Sheep PAb	<i>E. coli</i>
RD182001210-02	Leptin	Human	Mouse MAb, Clone LEP-02	<i>E. coli</i>
RD181001220	Leptin	Human	Rabbit PAb	<i>E. coli</i>
RD281001220	Leptin	Mouse	Rabbit PAb	<i>E. coli</i>
RD381001220	Leptin	Rat	Rabbit PAb	<i>E. coli</i>
RD182002110-01	Leptin Receptor	Human	Mouse MAb, Clone LPR-01	NSO
RD182002110-02	Leptin Receptor	Human	Mouse MAb, Clone LPR-02	NSO
RD184227100	Nesfatin-1	Human	Sheep Pab	<i>E. coli</i>
RD181276100	Neudesin	Human	Rabbit PAb	<i>E. coli</i>
RD184276100	Neudesin	Human	Sheep PAb	<i>E. coli</i>
RD181100100	Omentin-1	Human	Rabbit PAb	<i>E. coli</i>
RD184100100	Omentin-1	Human	Sheep PAb	<i>E. coli</i>
RD184279100	Paraoxonase 1	Human	Sheep PAb	<i>E. coli</i>

ENERGY METABOLISM AND BODY WEIGHT REGULATION - RESEARCH AND DIAGNOSTICS

Cat. No.	Description	Spec. React.	Type	Antigen
RD184473100	PCSK9	Human	Sheep PAb	HEK293
RD181473100	PCSK9	Human	Rabbit PAb	HEK293
RD181114100	Pigment Epithelium-Derived Factor	Human	Rabbit PAb	<i>E. coli</i>
RD184114100	Pigment Epithelium-Derived Factor	Human	Sheep PAb	<i>E. coli</i>
RD381016100	Resistin	Rat	Rabbit PAb	<i>E. coli</i>
RD184016220	Resistin	Human	Goat PAb	<i>E. coli</i>
RD181016220	Resistin	Human	Rabbit PAb	<i>E. coli</i>
RD184116100	sRAGE	Human	Sheep PAb	<i>E. coli</i>
RD181221100	S100A12	Human	Rabbit PAb	<i>E. coli</i>
RD184221100	S100A13	Human	Sheep PAb	<i>E. coli</i>
RD181158100	Trefoil Factor 1	Human	Rabbit PAb	<i>E. coli</i>
RD184158100	Trefoil Factor 1	Human	Sheep PAb	<i>E. coli</i>
RD181159100	Trefoil Factor 2	Human	Rabbit PAb	<i>E. coli</i>
RD184159100	Trefoil Factor 2	Human	Sheep PAb	<i>E. coli</i>
RD184160100	Trefoil Factor 3	Human	Sheep PAb	<i>E. coli</i>
RD181160100	Trefoil Factor 3	Human	Rabbit PAb	<i>E. coli</i>
RD181093100	Zinc-Alpha-2-Glycoprotein	Human	Rabbit PAb	HEK293
RD184093100	Zinc-Alpha-2-Glycoprotein	Human	Sheep PAb	HEK293

› Contact Information



BioVendor – Laboratorni medicina a.s.
 Karasek 1767/1, 621 00 Brno, Czech Republic
 Phone: +420 549 124 185
 Fax: +420 549 211 460
 E-mail: info@biovendor.com

BioVendor GmbH
 Otto-Hahn-Straße 16, 34123 Kassel, Germany
 Phone: +49 (0)561 861 509 33
 Fax: +49 (0)561 861 509 34
 E-mail: infoEU@biovendor.com

› www.biovendor.com

BioVendor GesmbH
 Gaudenzdorfer Gürtel 43-45, 1120 Vienna, Austria
 Phone: +43 1 890 9025
 Fax: +43 1 890 5163
 E-mail: infoAustria@biovendor.com

BioVendor, LLC
 128 Bingham Rd., Suite 1300, Asheville, NC 28806, USA
 Phone: +1-800-404-7807, Phone: +1-828-575-9250
 Fax: +1-828-575-9251
 E-mail: infoUSA@biovendor.com



Oxford Biosystems Ltd
 184B Park House, Park Drive
 Milton Park, Abingdon, Oxfordshire
 OX14 4SR, United Kingdom
 Phone: +44 (0)1235 431390
 E-mail: sales@oxfordbiosystems.com

› www.oxfordbiosystems.com