

CD138 Antibody : B-A38 Biotin conjugated

HUMAN CD138 BIOTINYLATED

CATALOGUE N° : 854.074.010

CLONE : B-A38

ISOTYPE : Mouse IgG1

IMMUNISATION : U266 cell line

HYBRIDOMA : Myeloma X63/AG.8653 x Balb/c spleen cells

SPECIFICITY : Recognises the syndecan-1, the heparan sulfate proteoglycan, a 65-70 kDa protein

QUANTITY : 100 tests

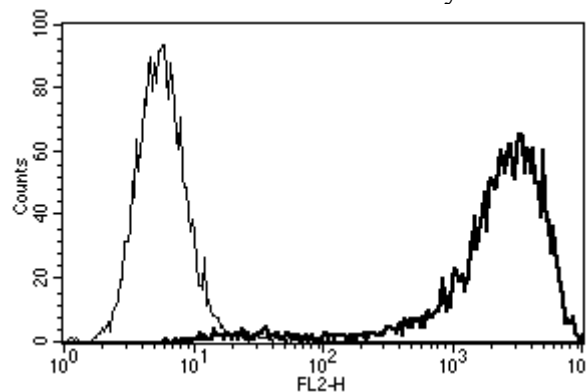
PURIFICATION : Ion exchange chromatography


FORMAT : Lyophilised in phosphate-buffered saline with 5% BSA and 0.1% sodium azide

WORKING DILUTION : Reconstitute with 1 ml deionised water
Use 10 µl to label 10⁶ cells or 100 µl of whole blood

STORAGE : Stable at +2-8°C for six months after reconstitution
For longer storage, freeze aliquots

APPLICATION : Suitable for flow cytometry
Immunoprecipitation : not tested
Western blot : not tested
Suitable for immunohistochemistry



A typical staining pattern with the B-A38 monoclonal antibody of U266 cell line
 *Sodium azide is a poisonous and hazardous substance, handle and dispose of properly*