

CD138 Antibody : B-A38 Unconjugate

HUMAN CD138 UNCONJUGATE

CATALOGUE N° : 854.073.020

CLONE : B-A38

ISOTYPE : Mouse IgG1

IMMUNISATION : U266 cell line

HYBRIDOMA : Myeloma X63/AG.8653 x Balb/c spleen cells

SPECIFICITY : Recognises the syndecan-1, the heparan sulfate proteoglycan, a 65-70 kDa protein

QUANTITY : 200 tests / 2 ml

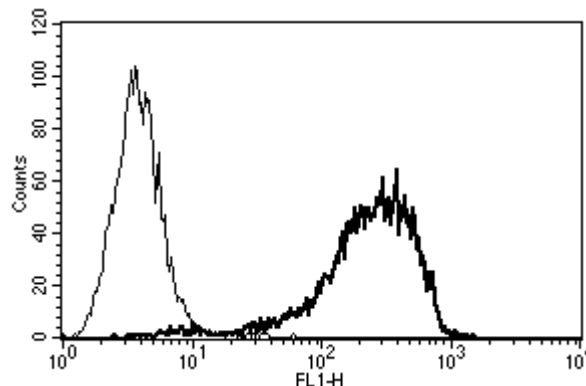
PURIFICATION : Ion exchange chromatography


FORMAT : Phosphate-buffered saline with 1 % BSA and 0.1 % sodium azide

WORKING DILUTION : Use 10 μ l to label 10^6 cells or 100 μ l of whole blood

STORAGE : Stable at +2-8°C for 12 months. For longer storage, freeze aliquots

APPLICATION : Suitable for flow cytometry
Immunoprecipitation : not tested
Western blot : not tested
Suitable for immunohistochemistry



A typical staining pattern with the B-A38 monoclonal antibody of U266 cell line
 Sodium azide is a poisonous and hazardous substance, handle and dispose of properly