

Alpha Synuclein Protein

Human Recombinant Alpha Synuclein Protein Aggregate (Control)
Catalog No. SPR-317



Overview

Product Name

Alpha Synuclein Protein

Description

Human Recombinant Alpha Synuclein Protein Aggregate (Control)

Applications

WB, SDS-PAGE, In vivo assay, In vitro assay

Concentration

Lot/batch specific. See included datasheet.

Conjugates

No tag

Nature

Recombinant

Species

Human

Expression System

E. coli

Amino Acid Sequence

MDVFMKGLSKAKEGVVAAAETKQGVAAEAGKTKEGVLYVGSKTKEGVVHGVATVAEKTKEQVTNVGGAVVTGVTAVAQKTVEGAGSIAAATGFVKKDLGKNEEGAPQEGILEDMPVDP
DNEAYEMPSEEGYQDYEPEA

Purity

92%

Protein Length

Full Length

Properties

Storage Buffer

0.2µm filtered solution in 20mM tris, 150mM NaCl pH7.5

Storage Temperature

-80°C

Shipping Temperature

Blue Ice or 4°C

Purification

Ion-exchange Purified

Specificity

~14.46 kDa

Cite This Product

Human Recombinant Alpha Synuclein Protein (StressMarq Biosciences Inc., Victoria BC CANADA, Catalog # SPR-317)

Certificate Of Analysis

Certified 92% pure using SDS-PAGE analysis.

Biological Description

Alternative Names

Alpha synuclein pre-formed fibrils, Alpha synuclein aggregates, Alpha synuclein protein aggregates, Alpha synuclein aggregates, Alpha-synuclein protein, Non-A beta component of AD amyloid protein, Non-A4 component of amyloid precursor protein, NACP protein, SNCA protein, NACP protein, PARK1 protein, SYN protein, Parkinson disease familial 1 Protein

Research Areas

Alzheimer's Disease, Neurodegeneration, Neuroscience, Parkinson's Disease

Cellular Localization

Cytoplasm, Membrane, Nucleus

Accession Number

NP_000336.1

Gene ID

6622

Swiss Prot

P37840

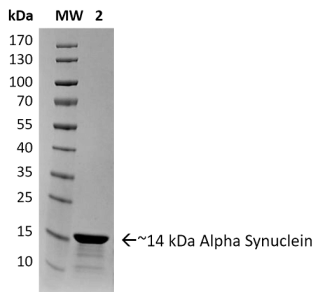
Scientific Background

Alpha-Synuclein (SNCA) is expressed predominantly in the brain, where it is concentrated in presynaptic nerve terminals (1). Alpha-synuclein is highly expressed in the mitochondria of the olfactory bulb, hippocampus, striatum and thalamus (2). Functionally, it has been shown to significantly interact with tubulin (3), and may serve as a potential microtubule-associated protein. It has also been found to be essential for normal development of the cognitive functions; inactivation

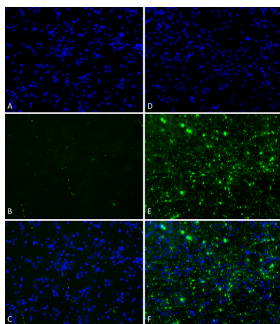
References

1. "Genetics Home Reference: SNCA". US National Library of Medicine. (2013).
2. Zhang L., et al. (2008) Brain Res. 1244: 40-52.
3. Alim M.A., et al. (2002) J Biol Chem. 277(3): 2112-2117.

Product Images



SDS-PAGE of ~14 kDa Human Recombinant Alpha Synuclein Protein Aggregate (Control) (SPR-317). Lane 1: Molecular Weight Ladder (MW). Lane 2: Alpha Synuclein Protein Aggregate (SPR-317).



Primary rat hippocampal neurons show Lewy body inclusion formation when treated with active Alpha Synuclein Protein Aggregate (SPR-322) at 4 µg/ml (D-F), but not when treated with control Alpha Synuclein Protein Aggregate (SPR-317) at 4 µg/ml (A-C). Tissue: Primary hippocampal neurons. Species: Sprague-Dawley rat. Fixation: 4% formaldehyde made from PFA. Primary Antibody: Mouse anti-pSer129 Antibody at 1:1000 24 hours at 4°C. Secondary Antibody: FITC Goat Anti-Mouse (green) at 1:700 for 1 hours at RT. Counterstain: Hoechst (blue) nuclear stain at 1:4000 for 1 hour at RT. Localization: Lewy body inclusions. Magnification: 20x.

Product Citations (0)

Currently there are no citations for this product.

Reviews