

RELA Antibody

Catalog No: #31102

Package Size: #31102-1 50ul #31102-2 100ul

Orders: order@signalwayantibody.com

Support: tech@signalwayantibody.com

Description

Product Name	RELA Antibody
Host Species	Rabbit
Clonality	Polyclonal
Applications	E WB
Species Reactivity	Hu
Specificity	The antibody detects endogenous level of total RELA protein.
Immunogen Type	Recombinant protein
Immunogen Description	Full length fusion protein
Target Name	RELA
Other Names	v-rel reticuloendotheliosis viral oncogene homolog A (avian), p65, NFKB3
Accession No.	Genbank No.: BC011603
Formulation	Supplied at 1mg/mL in phosphate buffered saline (without Mg ²⁺ and Ca ²⁺), pH 7.3, 0.05% sodium azide and 50% glycerol.
Storage	Store at -20°C/1 year

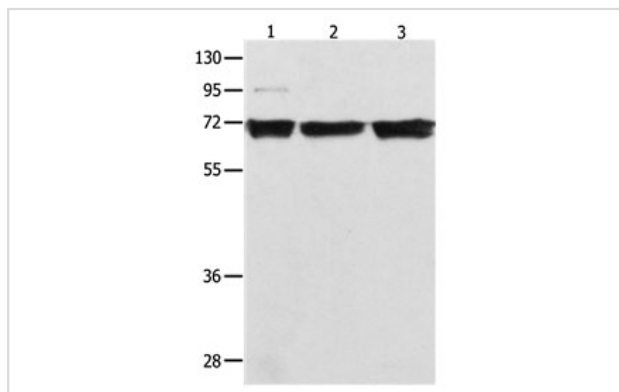
Application Details

Predicted MW: 25kd

ELISA: 1:2000-1:5000

Western blotting: 1:500-1:2000

Images



Gel: 10%SDS-PAGE

Lane1: 293T cell lysate

Lane2: K562 cell lysate

Lane3: Jurkat cell lysate

Lysates: 40 ug per lane

Primary antibody: 1/500 dilution

Secondary antibody: Goat anti Rabbit IgG - H&L (HRP) at

1/10000 dilution

Exposure time: 5 seconds

Background

NF-kappa-B is a ubiquitous transcription factor involved in several biological processes. It is held in the cytoplasm in an inactive state by specific inhibitors. Upon degradation of the inhibitor, NF-kappa-B moves to the nucleus and activates transcription of specific genes. NF-kappa-B is composed of NFKB1 or NFKB2 bound to either REL, RELA, or RELB. The most abundant form of NF-kappa-B is NFKB1 complexed with the product of this gene,

RELA. Four transcript variants encoding different isoforms have been found for this gene.

Note: This product is for in vitro research use only and is not intended for use in humans or animals.