

Caveolin-2 AntibodyB

Catalog No: #21687

Package Size: #21287-1 50ul #21287-2 100ul #21687-4 25ul

Orders: order@signalwayantibody.com

Support: tech@signalwayantibody.com

Description

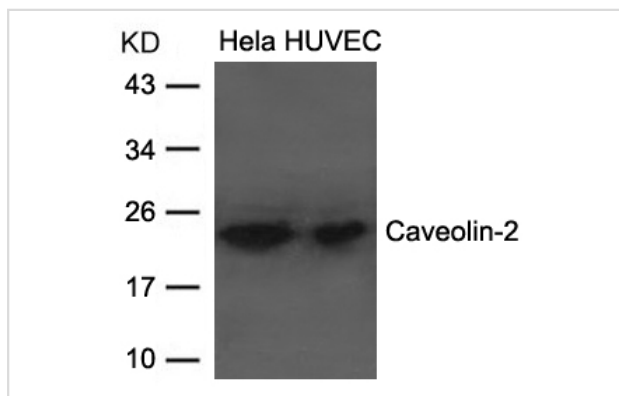
Product Name	Caveolin-2 AntibodyB
Host Species	Rabbit
Clonality	Polyclonal
Applications	WB
Species Reactivity	Hu
Specificity	The antibody detects endogenous level of total Caveolin-2 protein.
Immunogen Type	Peptide-KLH
Immunogen Description	Antibodies were produced by immunizing rabbits with synthetic peptide and KLH conjugates. Antibodies were purified by affinity-chromatography using epitope-specific peptide.
Target Name	Caveolin-2
Other Names	CAV,
Concentration	1.0mg/ml

Application Details

Predicted MW: 18 22kd

Western Blot: 1:500~1000

Images



Western blot analysis of extracts from HeLa and HUVEC cells using Caveolin-2 AntibodyB #21687.

Background

May act as a scaffolding protein within caveolar membranes. Interacts directly with G-protein alpha subunits and can functionally regulate their activity. Acts as an accessory protein in conjunction with CAV1 in targeting to lipid rafts and driving caveolae formation. The Ser-36 phosphorylated form has a role in modulating mitosis in endothelial cells. Positive regulator of cellular mitogenesis of the MAPK signaling pathway. Required for the insulin-stimulated nuclear translocation and activation of MAPK1 and STAT3, and the subsequent regulation of cell cycle progression.

Note: This product is for in vitro research use only and is not intended for use in humans or animals.