

#21583

Acetyl CoA Carboxylase Antibody

Catalog: #21583-1 50µl **Orders:** order@signalwayantibody.com
 #21583-2 100µl **Support:** tech@signalwayantibody.com
Storage: Store at -20°C/1 year **Web:** www.signalwayantibody.com



Application	Species Reactivity	Source	Molecular Wt.
WB	Human	Rabbit Polyconal Ab	265KD

Description: Antibodies were produced by immunizing rabbits with synthetic peptide and KLH conjugates. Antibodies were purified by affinity-chromatography using epitope-specific peptide.

Specificity: The antibody detects endogenous level of total Acetyl CoA Carboxylase protein.

Immunogen: Peptide sequence around aa.78-82(S-M-S-G-L) derived from Human Acetyl CoA Carboxylase.

Formulation: Supplied at 1.0mg/mL in phosphate buffered saline (without Mg²⁺ and Ca²⁺), pH 7.4, 150mM NaCl, 0.02% sodium azide and 50% glycerol.

Synonyms: ACC ACAC ACC1 ACCA ACACAD

Accession No.: Swiss-Prot#: Q13085 NCBI Gene#: 31
 NCBI Protein#: NP_942131.1

Background: Catalyzes the rate-limiting reaction in the biogenesis of long-chain fatty acids. Carries out three functions: biotin carboxyl carrier protein, biotin carboxylase and carboxyltransferase.

References:

Colbert C.L., Kim C.W., Moon Y.A., Henry L., Palnitkar M., McKean W.B., Fitzgerald K., Deisenhofer J., Horton J.D., Kwon H.J. Proc. Natl. Acad. Sci. U.S.A. 107:18820-18825(2010)
 Moreau K., Dizin E., Ray H., Luquain C., Lefai E., Fougelle F., Billaud M., Lenoir G.M., Venezia N.D.J. Biol. Chem. 281:3172-3181(2006)

Citation:

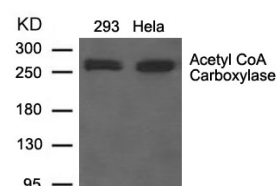
If you publish research using #21583 please [let us know](#).

Related Pathway: metabolism

Note: For western blotting, incubate membrane with diluted antibody in 5% nonfat milk, 1X TBS, 0.1% Tween-20 at 4°C with gentle shaking, overnight.

Recommended Dilutions:

Western blotting 1:500~1:1000



Western blot analysis of extracts from 293 and HeLa cells using Acetyl CoA Carboxylase Antibody #21583.