

Paxillin(Ab-88) Antibody

Catalog No: #21538

Package Size: #21538-1 50ul #21538-2 100ul #21538-4 25ul

Orders: order@signalwayantibody.comSupport: tech@signalwayantibody.com

Description

Product Name	Paxillin(Ab-88) Antibody
Host Species	Rabbit
Clonality	Polyclonal
Purification	Antibodies were produced by immunizing rabbits with synthetic peptide and KLH conjugates. Antibodies were purified by affinity-chromatography using epitope-specific peptide.
Applications	WB IF
Species Reactivity	Hu
Specificity	The antibody detects endogenous level of total Paxillin protein.
Immunogen Type	Peptide-KLH
Immunogen Description	Peptide sequence around aa.86~90 (P-V-Y-G-S) derived from Human Paxillin.
Target Name	Paxillin
Other Names	PAXI; PXN;
Accession No.	Swiss-Prot: P49023NCBI Protein: NP_001074324.1
Concentration	1.0mg/ml
Formulation	Supplied at 1.0mg/mL in phosphate buffered saline (without Mg ²⁺ and Ca ²⁺), pH 7.4, 150mM NaCl, 0.02% sodium azide and 50% glycerol.
Storage	Store at -20°C for long term preservation (recommended). Store at 4°C for short term use.

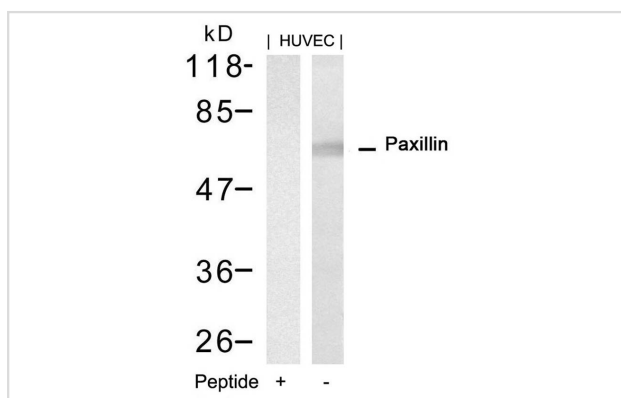
Application Details

Predicted MW: 68kd

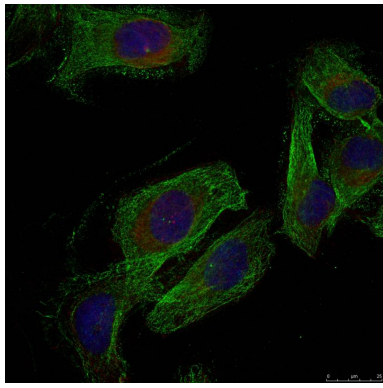
Western blotting: 1:500~1:1000

Immunofluorescence: 1:50~1:100

Images



Western blot analysis of extracts from HUVEC cells using Paxillin(Ab-88) Antibody #21538 and the same antibody preincubated with blocking peptide.



Immunofluorescence staining of methanol-fixed HeLa cells using Paxillin(Ab-88) Antibody #21538.

Background

Cytoskeletal protein involved in actin-membrane attachment at sites of cell adhesion to the extracellular matrix (focal adhesion).

Burridge, K. et al. (1992) J. Cell Biol. 119, 893-903.

Bellis, S. L. et al. (1995) J. Biol. Chem. 270, 17437-17441

Schaller, M.D. and Parsons, J.T. (1995) Mol. Cell. Biol. 15, 2635-2645.

Turner, C.E. (2000) J. Cell Sci. 113, 4139-4140.

Note: This product is for in vitro research use only and is not intended for use in humans or animals.