

CDC2(Ab-19) Antibody

Catalog No: #21529

Package Size: #21529-1 50ul #21529-2 100ul #21529-4 25ul

Orders: order@signalwayantibody.comSupport: tech@signalwayantibody.com

Description

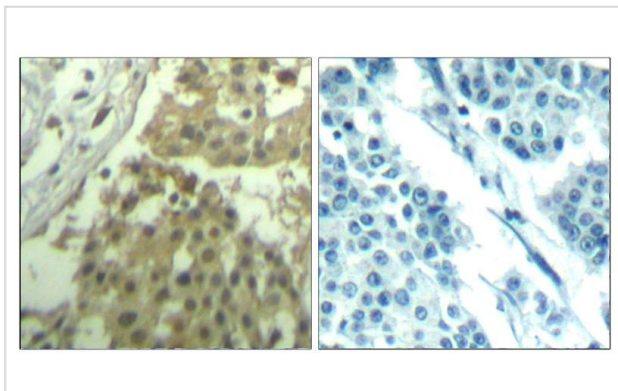
Product Name	CDC2(Ab-19) Antibody
Host Species	Rabbit
Clonality	Polyclonal
Purification	Antibodies were produced by immunizing rabbits with synthetic peptide and KLH conjugates. Antibodies were purified by affinity-chromatography using epitope-specific peptide.
Applications	IHC
Species Reactivity	Hu
Specificity	The antibody detects endogenous level of total CDC2 protein.
Immunogen Type	Peptide-KLH
Immunogen Description	Peptide sequence around aa.17~21 (V-V-Y-K-G) derived from Human CDC2.
Target Name	CDC2
Other Names	CDC28; CDC2A; CDK1; Cyclin-dependent kinase 1;
Accession No.	Swiss-Prot: P06493NCBI Protein: NP_001163877.1
Concentration	1.0mg/ml
Formulation	Supplied at 1.0mg/mL in phosphate buffered saline (without Mg ²⁺ and Ca ²⁺), pH 7.4, 150mM NaCl, 0.02% sodium azide and 50% glycerol.
Storage	Store at -20°C for long term preservation (recommended). Store at 4°C for short term use.

Application Details

Predicted MW: 34kd

Immunohistochemistry: 1:50~1:100

Images



Immunohistochemical analysis of paraffin-embedded human breast carcinoma tissue using CDC2(Ab-19) Antibody #21529(left) or the same antibody preincubated with blocking peptide(right).

Background

Plays a key role in the control of the eukaryotic cell cycle. It is required in higher cells for entry into S-phase and mitosis. p34 is a component of the

kinase complex that phosphorylates the repetitive C-terminus of RNA polymerase II.

Hunter, T. (1995) Cell 80, 225-236.

Wells, N.J. et al. (1999) J. Cell. Sci. 112, 3361-3371.

McGowan, C.H. and Russell, P. (1993) EMBO J. 12, 75-85.

Note: This product is for in vitro research use only and is not intended for use in humans or animals.