

## PI3 Kinase p85/p55(Ab-467/199) Antibody

Catalog No: #21508

Package Size: #21508-1 50ul #21508-2 100ul #21508-4 25ul

Orders: order@signalwayantibody.com

Support: tech@signalwayantibody.com

## Description

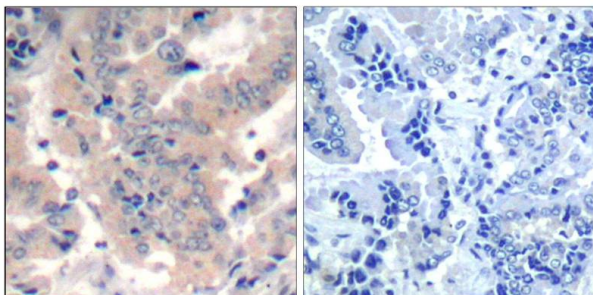
Product Name	PI3 Kinase p85/p55(Ab-467/199) Antibody
Host Species	Rabbit
Clonality	Polyclonal
Purification	Antibodies were produced by immunizing rabbits with synthetic peptide and KLH conjugates. Antibodies were purified by affinity-chromatography using epitope-specific peptide.
Applications	IHC
Species Reactivity	Hu Ms Rt
Specificity	The antibody detects endogenous level of total PI3 Kinase p85/p55 protein.
Immunogen Type	Peptide-KLH
Immunogen Description	Peptide sequence around aa.465~469(L-Y-E-E-Y) derived from Human PI3 Kinase p85/p55.
Target Name	PI3 Kinase p85/p55
Other Names	p85, AGM7, p85-ALPHA, p55, p55-GAMMA
Accession No.	Swiss-Prot: P27986 Q92569NCBI Protein: NP_001229395.1 NP_001107644.1
SDS-PAGE MW	55, 85kd
Concentration	1.0mg/ml
Formulation	Supplied at 1.0mg/mL in phosphate buffered saline (without Mg <sup>2+</sup> and Ca <sup>2+</sup> ), pH 7.4, 150mM NaCl, 0.02% sodium azide and 50% glycerol.
Storage	Store at -20°C for long term preservation (recommended). Store at 4°C for short term use.

## Application Details

Predicted MW: 55, 85kd

Immunohistochemistry: 1:50~1:100

## Images



Immunohistochemical analysis of paraffin-embedded human lung carcinoma tissue using PI3K P85 a/g/b(Ab-467/199/464) Antibody #21508(left) or the same antibody preincubated with blocking peptide(right).

## Background

---

PI3K binds to activated (phosphorylated) protein-Tyr kinases, through its SH2 domain, and acts as an adapter, mediating the association of the p110 catalytic unit to the plasma membrane. Necessary for the insulin-stimulated increase in glucose uptake and glycogen synthesis in insulin-sensitive tissues.

Stoyanov, B. et al. (1995) *Science* 269, 690-3.

Simpson, L. and Parsons, R. (2001) *Exp Cell Res* 264, 29-41.

Neri, L.M. et al. (2002) *Biochim Biophys Acta* 1584, 73-80.

---

Note: This product is for in vitro research use only and is not intended for use in humans or animals.