

Eif1 Antibody

Catalog No: #21466

Package Size: #21466-1 50ul #21466-2 100ul #21466-4 25ul

Orders: order@signalwayantibody.comSupport: tech@signalwayantibody.com

Description

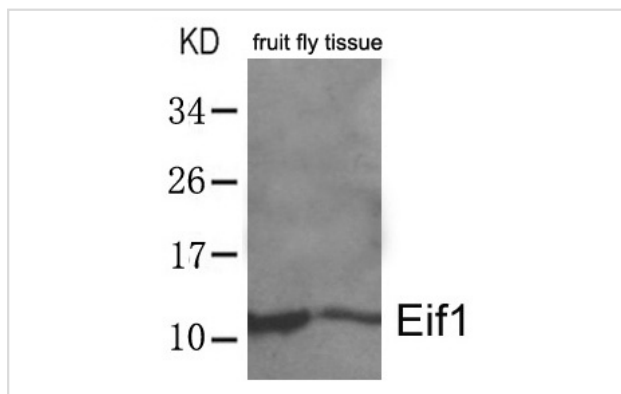
Product Name	Eif1 Antibody
Host Species	Rabbit
Clonality	Polyclonal
Purification	Antibodies were produced by immunizing rabbits with synthetic peptide and KLH conjugates. Antibodies were purified by affinity-chromatography using epitope-specific peptide.
Applications	WB
Species Reactivity	Dm
Specificity	The antibody detects endogenous levels of total Eif1 protein.
Immunogen Type	Peptide-KLH
Immunogen Description	Peptide sequence around aa. 4~8 (Q-N-L-N-T) derived from Drosophila Eif1
Target Name	Eif1
Other Names	A121; ISO1; SUI1; EIF1A;
Accession No.	Swiss-Prot: P41567NCBI Protein: NP_005792.1
Concentration	1.0mg/ml
Formulation	Supplied at 1.0mg/mL in phosphate buffered saline (without Mg ²⁺ and Ca ²⁺), pH 7.4, 150mM NaCl, 0.02% sodium azide and 50% glycerol.
Storage	Store at -20°C for long term preservation (recommended). Store at 4°C for short term use.

Application Details

Predicted MW: 13kd

Western blotting: 1:500~1:1000

Images



Western blot analysis of extracts from whole fruit fly (*Drosophila melanogaster*) tissue lysate using Eif1 Antibody #21466.

Background

Necessary for scanning and involved in initiation site selection. Promotes the assembly of 48S ribosomal complexes at the authentic initiation codon of

a conventional capped mRNA

Sheikh M.S., Fernandez-Salas E., Yu M., Hussain A., Fornace A.J. Jr. J. Biol. Chem. 274:16487-16493(1999)

Mendell J.T., Medghalchi S.M., Lake R.G., Noensie E.N., Dietz H.C. Mol. Cell. Biol. 20:8944-8957(2000)

Note: This product is for in vitro research use only and is not intended for use in humans or animals.