

Caspase 9 Antibody

Catalog No: #21422

Package Size: #21422-1 50ul #21422-2 100ul #21422-4 25ul

Orders: order@signalwayantibody.comSupport: tech@signalwayantibody.com

Description

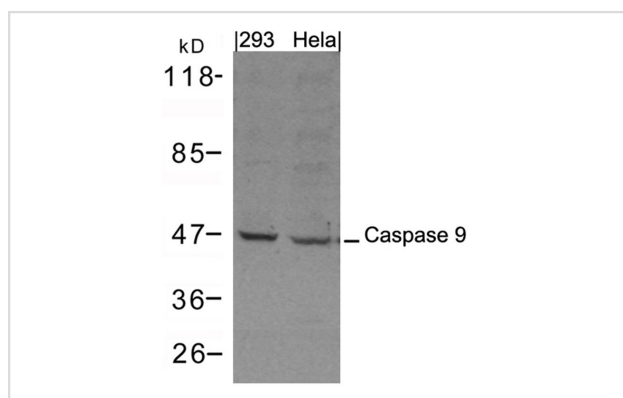
Product Name	Caspase 9 Antibody
Host Species	Rabbit
Clonality	Polyclonal
Purification	Antibodies were produced by immunizing rabbits with synthetic peptide and KLH conjugates. Antibodies were purified by affinity-chromatography using epitope-specific peptide.
Applications	WB
Species Reactivity	Hu
Specificity	The antibody detects endogenous level of total Caspase 9 protein.
Immunogen Type	Peptide-KLH
Immunogen Description	Peptide sequence around aa.301~305 (T-S-P-E-D) derived from Caspase 9
Target Name	Caspase 9
Other Names	ICE-like apoptotic protease 6
Accession No.	Swiss-Prot: P55211 NCBI Protein: NP_001220.2
Concentration	1.0mg/ml
Formulation	Supplied at 1.0mg/mL in phosphate buffered saline (without Mg ²⁺ and Ca ²⁺), pH 7.4, 150mM NaCl, 0.02% sodium azide and 50% glycerol.
Storage	Store at -20°C for long term preservation (recommended). Store at 4°C for short term use.

Application Details

Predicted MW: 47 37 35kd

Western blotting: 1:1000

Images



Western blot analysis of extracts from 293 and Hela cells using Caspase 9 Antibody #21422.

Background

Involved in the activation cascade of caspases responsible for apoptosis execution. Binding of caspase-9 to Apaf-1 leads to activation of the protease which then cleaves and activates caspase-3. Proteolytically cleaves poly(ADP-ribose) polymerase (PARP). Isoform 2 lacks activity is an dominant-negative inhibitor of caspase-9.

Zou, H. et al. (1999) J. Biol. Chem. 274, 11549-11556.

Deveraux, Q. L. et al. (1998) EMBO J. 17, 2215-2223.

Li, P. et al. (1997) Cell 91, 479-489.

Note: This product is for in vitro research use only and is not intended for use in humans or animals.