

LC3a Antibody

Catalog No: #21402

Package Size: #21402-1 50ul #21402-2 100ul #21402-4 25ul

Orders: order@signalwayantibody.comSupport: tech@signalwayantibody.com

Description

| | |
|-----------------------|---|
| Product Name | LC3a Antibody |
| Host Species | Rabbit |
| Clonality | Polyclonal |
| Purification | Antibodies were produced by immunizing rabbits with synthetic peptide and KLH conjugates. Antibodies were purified by affinity-chromatography using epitope-specific peptide. |
| Applications | WB IF |
| Species Reactivity | Hu Ms Rt |
| Specificity | The antibody detects endogenous level of total LC3A protein. |
| Immunogen Type | Peptide-KLH |
| Immunogen Description | Peptide sequence around aa.5~10 (R-P-F-K-Q) derived from Human LC3A. |
| Target Name | LC3a |
| Other Names | Microtubule-associated protein 1 light chain 3 alpha; MAP1A/1B light chain 3 A; MAP1A/MAP1B LC3 A; MAP1 light chain 3-like protein 1; Autophagy-related protein LC3 A |
| Accession No. | Swiss-Prot: Q9H492NCBI Protein: NP_115903.1 |
| Concentration | 1.0mg/ml |
| Formulation | Supplied at 1.0mg/mL in phosphate buffered saline (without Mg ²⁺ and Ca ²⁺), pH 7.4, 150mM NaCl, 0.02% sodium azide and 50% glycerol. |
| Storage | Store at -20°C for long term preservation (recommended). Store at 4°C for short term use. |

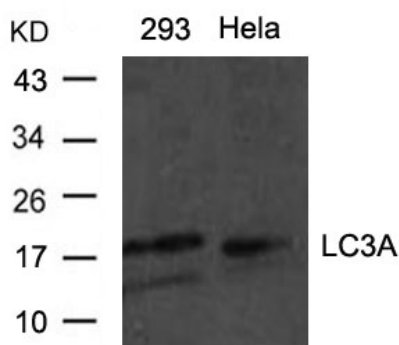
Application Details

Predicted MW: 18 16 kd

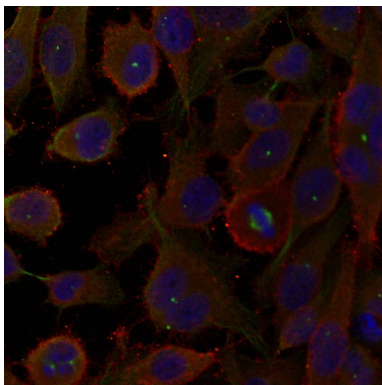
Western blotting: 1:500~1:1000

Immunofluorescence: 1:100~1:200

Images



Western blot analysis of extracts from HeLa and 293 cells using LC3A antibody #21402.



Immunofluorescence staining of methanol-fixed HeLa cells using LC3A antibody #21402.

Background

Probably involved in formation of autophagosomal vacuoles (autophagosomes).

Note: This product is for in vitro research use only and is not intended for use in humans or animals.