

## Niban Antibody

Catalog No: #21401

Package Size: #21401-1 50ul #21401-2 100ul #21401-4 25ul

Orders: [order@signalwayantibody.com](mailto:order@signalwayantibody.com)Support: [tech@signalwayantibody.com](mailto:tech@signalwayantibody.com)

## Description

Product Name	Niban Antibody
Host Species	Rabbit
Clonality	Polyclonal
Purification	Antibodies were produced by immunizing rabbits with synthetic peptide and KLH conjugates. Antibodies were purified by affinity-chromatography using epitope-specific peptide.
Applications	WB IF
Species Reactivity	Hu
Specificity	The antibody was affinity-purified from rabbit antiserum by affinity-chromatography using epitope-specific immunogen.
Immunogen Type	Peptide-KLH
Immunogen Description	peptide sequence around aa. 912~916 (K-E-G-E-G) derived from Human Niban.
Target Name	Niban
Other Names	FAM129A
Accession No.	Swiss-Prot: Q9BZQ8NCBI Protein: NP_443198.1
Concentration	1.0mg/ml
Formulation	Supplied at 1.0mg/mL in phosphate buffered saline (without Mg <sup>2+</sup> and Ca <sup>2+</sup> ), pH 7.4, 150mM NaCl, 0.02% sodium azide and 50% glycerol.
Storage	Store at -20°C for long term preservation (recommended). Store at 4°C for short term use.

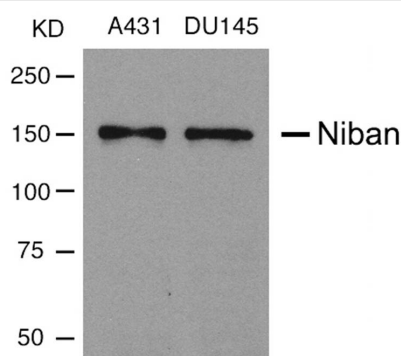
## Application Details

Predicted MW: 150kd

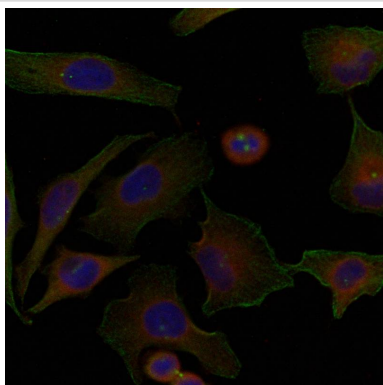
Western blotting: 1:500~1:1000

Immunofluorescence: 1:100~1:200

## Images



Western blot analysis of extracts from A431 and DU145 cells using Niban Antibody #21401.



Immunofluorescence staining of methanol-fixed HeLa cells using Niban Antibody #21401.

## Background

Regulates phosphorylation of a number of proteins involved in translation regulation including EIF2A, EIF4EBP1 and RPS6KB1. May be involved in the endoplasmic reticulum stress response

Vill

Note: This product is for in vitro research use only and is not intended for use in humans or animals.