

CPI17a(Ab-38) Antibody

Catalog No: #21281

Package Size: #21281-1 50ul #21281-2 100ul #21281-4 25ul

Orders: order@signalwayantibody.comSupport: tech@signalwayantibody.com

Description

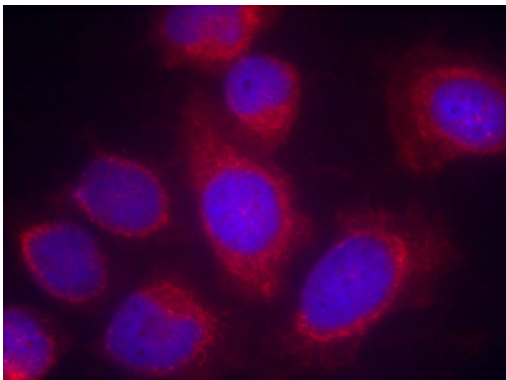
Product Name	CPI17a(Ab-38) Antibody
Host Species	Rabbit
Clonality	Polyclonal
Purification	Antibodies were produced by immunizing rabbits with synthetic peptide and KLH conjugates. Antibodies were purified by affinity-chromatography using epitope-specific peptide.
Applications	IF
Species Reactivity	Hu Ms Rt
Specificity	The antibody detects endogenous level of total CPI17a protein.
Immunogen Type	Peptide-KLH
Immunogen Description	Peptide sequence around aa.36~40 (R-V-T-V-K) derived from Human CPI17a.
Target Name	CPI17a
Other Names	CPI; CPI-17; CPI17; PP14A;
Accession No.	Swiss-Prot: Q96A00NCBI Protein: NP_150281.1
Concentration	1.0mg/ml
Formulation	Supplied at 1.0mg/mL in phosphate buffered saline (without Mg ²⁺ and Ca ²⁺), pH 7.4, 150mM NaCl, 0.02% sodium azide and 50% glycerol.
Storage	Store at -20°C for long term preservation (recommended). Store at 4°C for short term use.

Application Details

Predicted MW: 17kd

Immunofluorescence: 1:100~1:200

Images



Immunofluorescence staining of methanol-fixed HeLa cells using CPI17a(Ab-38) Antibody #21281.

Background

Inhibitor of PPP1CA. Has over 1000-fold higher inhibitory activity when phosphorylated, creating a molecular switch for regulating the phosphorylation

status of PPP1CA substrates and smooth muscle contraction.

Hagerty L, et al. (2007) J Biol Chem. 2007; 282(7):4884-93

Seok YM, et al. (2008) J Pharmacol Exp Ther.

Niuro N et al. (2003) Biochem J. 2003 ;369(Pt 1):117-28

Note: This product is for in vitro research use only and is not intended for use in humans or animals.