

p70 S6 Kinase(Ab-421) Antibody

Catalog No: #21246



Package Size: #21246-1 50ul #21246-2 100ul #21246-4 25ul

Orders: order@signalwayantibody.com

Support: tech@signalwayantibody.com

Description

Product Name	p70 S6 Kinase(Ab-421) Antibody
Host Species	Rabbit
Clonality	Polyclonal
Purification	Antibodies were produced by immunizing rabbits with synthetic peptide and KLH conjugates. Antibodies were purified by affinity-chromatography using epitope-specific peptide.
Applications	WB IHC
Species Reactivity	Hu Ms Rt
Specificity	The antibody detects endogenous level of total p70 S6 Kinase protein.
Immunogen Type	Peptide-KLH
Immunogen Description	Peptide sequence around aa.419~423 (P-R-T-P-V) derived from Human p70 S6 Kinase.
Target Name	p70 S6 Kinase
Other Names	KS6B1; P70-S6K; RPS6KB1; S6K;
Accession No.	Swiss-Prot: P23443NCBI Protein: NP_003152.1
Concentration	1.0mg/ml
Formulation	Supplied at 1.0mg/mL in phosphate buffered saline (without Mg ²⁺ and Ca ²⁺), pH 7.4, 150mM NaCl, 0.02% sodium azide and 50% glycerol.
Storage	Store at -20°C for long term preservation (recommended). Store at 4°C for short term use.

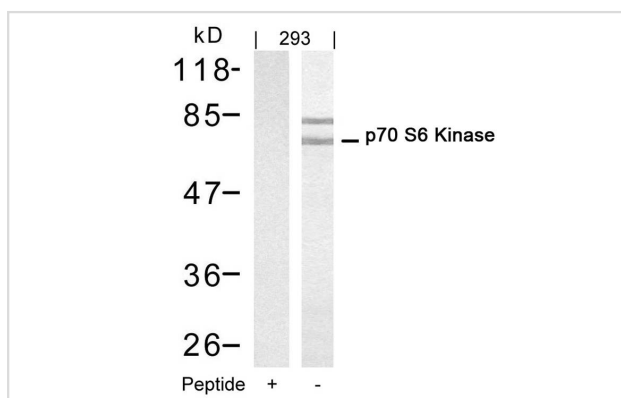
Application Details

Predicted MW: 70 85 kd

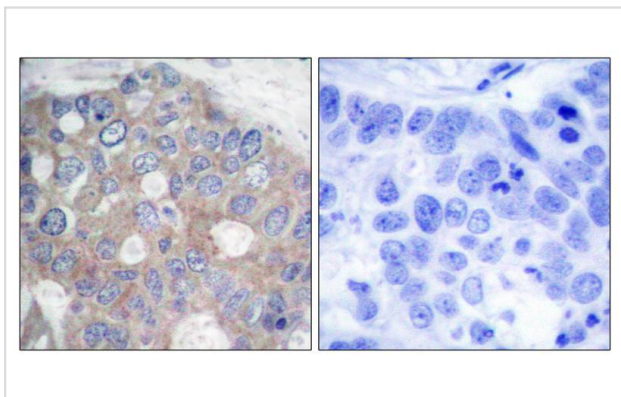
Western blotting: 1:500~1:1000

Immunohistochemistry: 1:50~1:100

Images



Western blot analysis of extracts from 293 cells using p70 S6 Kinase(Ab-421) Antibody #21246(Lane 2) and the same antibody preincubated with blocking peptide(Lane1).



Immunohistochemical analysis of paraffin-embedded human breast carcinoma tissue using p70 S6 Kinase(Ab-421) Antibody #21246(left) or the same antibody preincubated with blocking peptide(right).

Background

Phosphorylates specifically ribosomal protein S6 in response to insulin or several classes of mitogens. Promotes protein synthesis by phosphorylating PDCD4 at 'Ser-67' and targeting it for degradation.

Xiao-Feng, et al. (2003) *Le1* 30 Volume 22: 484-497

An WL, et al. (2003) *Am J Pathol.* 163(2): 591-607.

Le XF, et al. (2003) *Oncogene.*22(4): 484-97

Note: This product is for in vitro research use only and is not intended for use in humans or animals.