

## S6 Ribosomal Protein(Ab-235) Antibody

Catalog No: #21225



Package Size: #21225-1 50ul #21225-2 100ul #21225-4 25ul

Orders: order@signalwayantibody.com

Support: tech@signalwayantibody.com

## Description

Product Name	S6 Ribosomal Protein(Ab-235) Antibody
Host Species	Rabbit
Clonality	Polyclonal
Purification	Antibodies were produced by immunizing rabbits with synthetic peptide and KLH conjugates. Antibodies were purified by affinity-chromatography using epitope-specific peptide.
Applications	WB IHC IF
Species Reactivity	Hu Ms Rt
Specificity	The antibody detects endogenous level of total S6 Ribosomal protein.
Immunogen Type	Peptide-KLH
Immunogen Description	Peptide sequence around aa. 233~237 (R-L-S-S-L) derived from Human S6 Ribosomal Protein.
Target Name	S6 Ribosomal Protein
Other Names	NP33; RPS6; RS6
Accession No.	Swiss-Prot: P62753NCBI Protein: NP_001001.2
Concentration	1.0mg/ml
Formulation	Supplied at 1.0mg/mL in phosphate buffered saline (without Mg <sup>2+</sup> and Ca <sup>2+</sup> ), pH 7.4, 150mM NaCl, 0.02% sodium azide and 50% glycerol.
Storage	Store at -20°C for long term preservation (recommended). Store at 4°C for short term use.

## Application Details

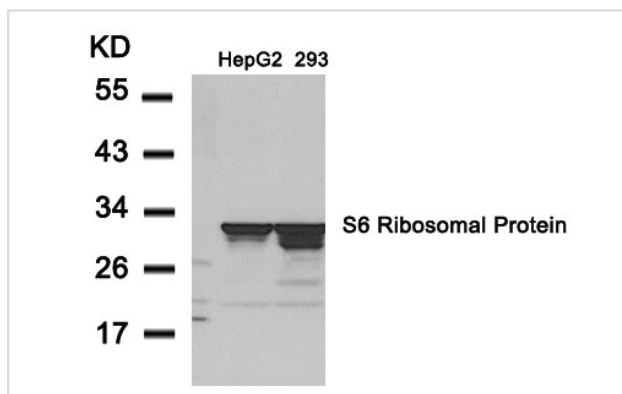
Predicted MW: 32kd

Western blotting: 1:500~1:1000

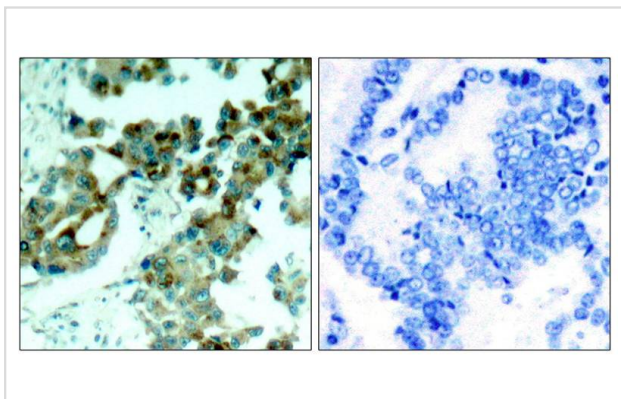
Immunohistochemistry: 1:50~1:100

Immunofluorescence: 1:100~1:200

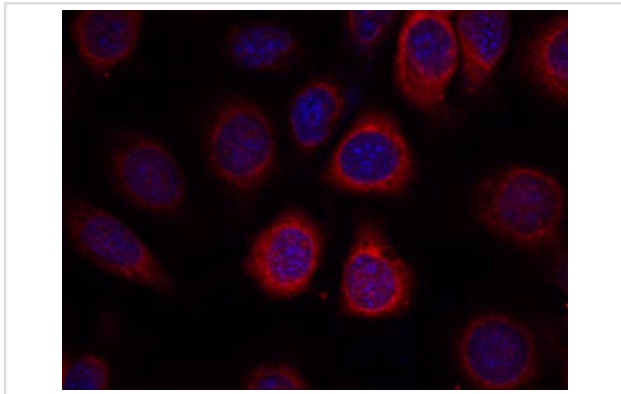
## Images



Western blot analysis of extracts from HepG2 and 293 cells using S6 Ribosomal Protein(Ab-235) Antibody #21225.



Immunohistochemical analysis of paraffin- embedded human lung carcinoma tissue using S6 Ribosomal Protein(Ab-235) Antibody #21225(left) or the same antibody preincubated with blocking peptide(right).



Immunofluorescence staining of methanol-fixed MCF7 cells using S6 Ribosomal Protein(Ab-235) Antibody #21225.

## Background

May play an important role in controlling cell growth and proliferation through the selective translation of particular classes of mRNA.

McBride K, et al. (1998) Mol Cell Biol 18(9): 5073-5081.

Williams AJ, et al. (2003) Plant Physiol 132(4): 2086-2097.

Wilson MA, et al. (1997) Biochem J 325(Pt 1): 217-222.

Arnesen T, et al. (2005) Biochem J 386(Pt 3): 433-443.

Note: This product is for in vitro research use only and is not intended for use in humans or animals.