

## cdc25A(Ab-76) Antibody

Catalog No: #21163

Package Size: #21163-1 50ul #21163-2 100ul #21163-4 25ul

Orders: order@signalwayantibody.com

Support: tech@signalwayantibody.com

## Description

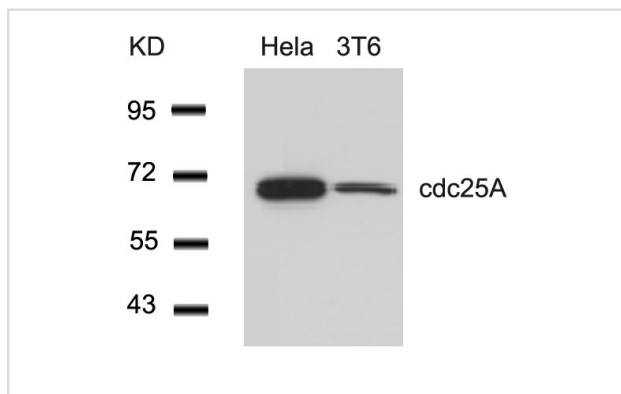
Product Name	cdc25A(Ab-76) Antibody
Host Species	Rabbit
Clonality	Polyclonal
Purification	Antibodies were produced by immunizing rabbits with synthetic peptide and KLH conjugates. Antibodies were purified by affinity-chromatography using epitope-specific peptide.
Applications	WB
Species Reactivity	Hu Ms
Specificity	The antibody detects endogenous level of total cdc25A protein.
Immunogen Type	Peptide-KLH
Immunogen Description	Peptide sequence around aa. 73~77 (M-G-S-S-E) derived from Human cdc25A.
Target Name	cdc25A
Other Names	CDC25M3; MPIP1;
Accession No.	Swiss-Prot: P30304NCBI Protein: NP_001780.2
Concentration	1.0mg/ml
Formulation	Supplied at 1.0mg/mL in phosphate buffered saline (without Mg <sup>2+</sup> and Ca <sup>2+</sup> ), pH 7.4, 150mM NaCl, 0.02% sodium azide and 50% glycerol.
Storage	Store at -20°C for long term preservation (recommended). Store at 4°C for short term use.

## Application Details

Predicted MW: 70kd

Western blotting: 1:500~1:1000

## Images



Western blot analysis of extracts from HeLa and 3T6 cells using cdc25A(Ab-76) Antibody #21163.

## Background

Tyrosine protein phosphatase which functions as a dosage-dependent inducer of mitotic progression. Directly dephosphorylates CDC2 and stimulates

its kinase activity. Also dephosphorylates CDK2 in complex with cyclin E, in vitro.

Jin J, et al. (2003) *Genes* 17(24): 3062-74.

Shimuta K, et al. (2002) *EMBO J* 21(14): 3694-703.

---

Note: This product is for in vitro research use only and is not intended for use in humans or animals.