

p21Cip1(Ab-145) Antibody

Catalog No: #21149

Package Size: #21149-1 50ul #21149-2 100ul #21149-4 25ul

Orders: order@signalwayantibody.comSupport: tech@signalwayantibody.com

Description

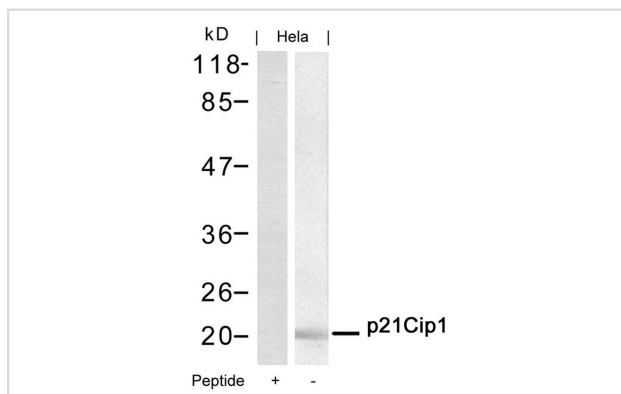
Product Name	p21Cip1(Ab-145) Antibody
Host Species	Rabbit
Clonality	Polyclonal
Purification	Antibodies were produced by immunizing rabbits with synthetic peptide and KLH conjugates. Antibodies were purified by affinity-chromatography using epitope-specific peptide.
Applications	WB
Species Reactivity	Hu
Specificity	The antibody detects endogenous level of total p21Cip1 protein.
Immunogen Type	Peptide-KLH
Immunogen Description	Peptide sequence around aa.143~147 (R-Q-T-S-M) derived from Human p21Cip1.
Target Name	p21Cip1
Other Names	CAP20; CDK-interacting protein 1; CDKN1; CDKN1A; CDN1A
Accession No.	Swiss-Prot: P38936NCBI Protein: NP_000380.1
Concentration	1.0mg/ml
Formulation	Supplied at 1.0mg/mL in phosphate buffered saline (without Mg ²⁺ and Ca ²⁺), pH 7.4, 150mM NaCl, 0.02% sodium azide and 50% glycerol.
Storage	Store at -20°C for long term preservation (recommended). Store at 4°C for short term use.

Application Details

Predicted MW: 21kd

Western blotting: 1:500~1:1000

Images



Western blot analysis of extracts from HeLa cells using p21Cip1(Ab-145) Antibody #21149 and the same antibody preincubated with blocking peptide.

Background

May be the important intermediate by which p53 mediates its role as an inhibitor of cellular proliferation in response to DNA damage. Binds to and

inhibits cyclin-dependent kinase activity, preventing phosphorylation of critical cyclin-dependent kinase substrates and blocking cell cycle progression.

Ocker M Int,et al. (2007)J Biochem Cell Biol. 39(7-8):1367-74.

Dangi S, et al.(2006)Cell Prolif. 39(4):261-79.

Chen J,et al.(2006)Am J Physiol Heart Circ Physiol. 290(4):H1575-86

Note: This product is for in vitro research use only and is not intended for use in humans or animals.