

## p90RSK(Ab-348) Antibody

Catalog No: #21135



Package Size: #21135-1 50ul #21135-2 100ul #21135-4 25ul

Orders: [order@signalwayantibody.com](mailto:order@signalwayantibody.com)Support: [tech@signalwayantibody.com](mailto:tech@signalwayantibody.com)

## Description

Product Name	p90RSK(Ab-348) Antibody
Host Species	Rabbit
Clonality	Polyclonal
Purification	Antibodies were produced by immunizing rabbits with synthetic peptide and KLH conjugates. Antibodies were purified by affinity-chromatography using epitope-specific peptide.
Applications	WB IF
Species Reactivity	Hu Ms Rt
Specificity	The antibody detects endogenous level of total p90RSK protein.
Immunogen Type	Peptide-KLH
Immunogen Description	Peptide sequence around aa.346~350 (S-R-T-P-R) derived from Mouse p90RSK.
Target Name	p90RSK
Other Names	KS6A1; MAPKAP-K1a; RPS6KA1; RSK-1; RSK1
Accession No.	Swiss-Prot: Q15418NCBI Protein: NP_001006666.1
Concentration	1.0mg/ml
Formulation	Supplied at 1.0mg/mL in phosphate buffered saline (without Mg <sup>2+</sup> and Ca <sup>2+</sup> ), pH 7.4, 150mM NaCl, 0.02% sodium azide and 50% glycerol.
Storage	Store at -20°C for long term preservation (recommended). Store at 4°C for short term use.

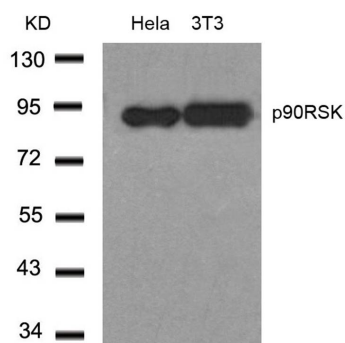
## Application Details

Predicted MW: 90kd

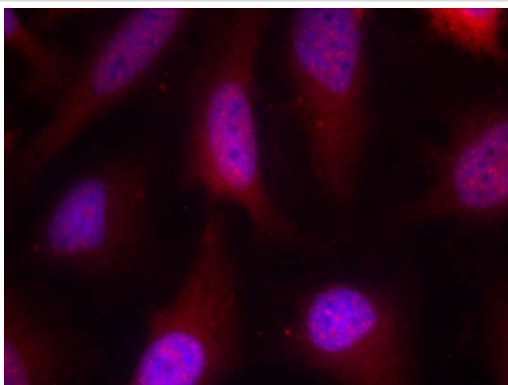
Western blotting: 1:500~1:1000

Immunofluorescence: 1:100~1:200

## Images



Western blot analysis of extracts from HeLa and 3T3 cells using p90RSK(Ab-348) Antibody #21135.



Immunofluorescence staining of methanol-fixed HeLa cells using p90RSK(Ab-348) Antibody #21135.

## Background

Serine/threonine kinase that may play a role in mediating the growth-factor and stress induced activation of the transcription factor CREB.

Silverman E, et al. Mol Cell Biol. 2004 Dec; 24(24): 10573-10583.

Andrew D, et al. Biochem J. 2006 February 1; 393(Pt 3): 715

Note: This product is for in vitro research use only and is not intended for use in humans or animals.