

Ezrin(Ab-353) Antibody

Catalog No: #21094

Package Size: #21094-1 50ul #21094-2 100ul #21094-4 25ul

Orders: order@signalwayantibody.comSupport: tech@signalwayantibody.com

Description

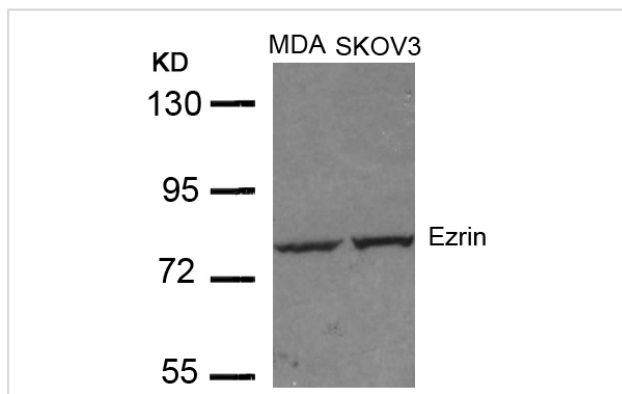
Product Name	Ezrin(Ab-353) Antibody
Host Species	Rabbit
Clonality	Polyclonal
Purification	Antibodies were produced by immunizing rabbits with synthetic peptide and KLH conjugates. Antibodies were purified by affinity-chromatography using epitope-specific peptide.
Applications	WB
Species Reactivity	Hu
Specificity	The antibody detects endogenous level of total Ezrin protein.
Immunogen Type	Peptide-KLH
Immunogen Description	Peptide sequence around aa.351~355 (Q-D-Y-E-E) derived from Human EZRIN.
Target Name	Ezrin
Other Names	Cytovillin; EZRI; VIL2; Villin 2; p81
Accession No.	Swiss-Prot: P15311NCBI Protein: NP_001104547.1
Concentration	1.0mg/ml
Formulation	Supplied at 1.0mg/mL in phosphate buffered saline (without Mg ²⁺ and Ca ²⁺), pH 7.4, 150mM NaCl, 0.02% sodium azide and 50% glycerol.
Storage	Store at -20°C for long term preservation (recommended). Store at 4°C for short term use.

Application Details

Predicted MW: 81kd

Western blotting: 1:500~1:1000

Images



Western blot analysis of extracts from MDA and SKOV3 cells using Ezrin(Ab-353) Antibody #21094.

Background

Probably involved in connections of major cytoskeletal structures to the plasma membrane. In epithelial cells, required for the formation of microvilli

and membrane ruffles on the apical pole. Along with PLEKHG6, required for normal macropinocytosis.

Zhao H, et al. (2004) Proc Natl Acad Sci U S A 101 (25): 9485-90.

Wang Q, et al. (2003) J Biol Chem 278(48): 47731-43.

Gautreau A, et al. (1999) Proc Natl Acad Sci U S A: 96(13): 7300-5.

Crepaldi T, et al. (1997) J Cell Biol: 28; 138(2): 423-34.

Note: This product is for in vitro research use only and is not intended for use in humans or animals.