

BCL-XL(Ab-62) Antibody

Catalog No: #21061



Package Size: #21061-1 50ul #21061-2 100ul #21061-4 25ul

Orders: order@signalwayantibody.com

Support: tech@signalwayantibody.com

Description

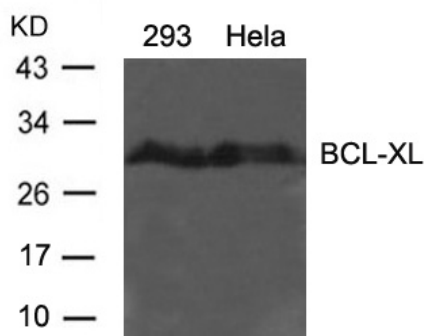
Product Name	BCL-XL(Ab-62) Antibody
Host Species	Rabbit
Clonality	Polyclonal
Purification	Antibodies were produced by immunizing rabbits with synthetic peptide and KLH conjugates. Antibodies were purified by affinity-chromatography using epitope-specific peptide.
Applications	WB
Species Reactivity	Hu Ms Rt
Specificity	The antibody detects endogenous level of total BCL-XL protein.
Immunogen Type	Peptide-KLH
Immunogen Description	Peptide sequence around aa.60~64 (A-D-S-P-A) derived from human BCL-XL .
Target Name	BCL-XL
Other Names	Apoptosis regulator Bcl-X
Accession No.	Swiss-Prot: Q07817NCBI Protein: NP_612815.1
Concentration	1.0mg/ml
Formulation	Supplied at 1.0mg/mL in phosphate buffered saline (without Mg ²⁺ and Ca ²⁺), pH 7.4, 150mM NaCl, 0.02% sodium azide and 50% glycerol.
Storage	Store at -20°C for long term preservation (recommended). Store at 4°C for short term use.

Application Details

Predicted MW: 30kd

Western blotting: 1:500~1:1000

Images



Western blot analysis of extracts from 293 and HeLa cells using BCL-XL(Ab-62) antibody #21061.

Background

Potent inhibitor of cell death. Isoform Bcl-X(L) anti-apoptotic activity is inhibited by association with SIVA isoform 1. Inhibits activation of caspases By

similarity. Appears to regulate cell death by blocking the voltage-dependent anion channel (VDAC) by binding to it and preventing the release of the caspase activator, cytochrome c, from the mitochondrial membrane. The Bcl-X(S) isoform promotes apoptosis.

Basu A, et.al.(2003) Mar 13; 538(1-3): 41-7

Cheng E.H.-Y. et.al. (1996) Nature 379:554-556.

Sattler M. et.al. (1997), Science 275:983-986.

Muchmore S.W.et.al (1996).Nature 381:335-341

Yu J., Zhang L. Mol. (2001)Cell 7:673-682

Note: This product is for in vitro research use only and is not intended for use in humans or animals.