

DESCRIPTION

Species Reactivity	Human
Specificity	Detects human Chromogranin A in direct ELISAs.
Source	Monoclonal Mouse IgG ₁ Clone # 948128
Purification	Protein A or G purified from hybridoma culture supernatant
Immunogen	Human embryonic kidney cell line HEK293-derived human Chromogranin A Met1-Gly457 Accession # P10645
Formulation	Lyophilized from a 0.2 µm filtered solution in PBS with Trehalose. See Certificate of Analysis for details. *Small pack size (-SP) is supplied either lyophilized or as a 0.2 µm filtered solution in PBS.

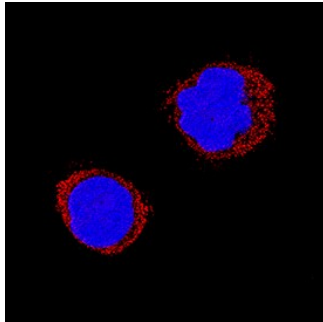
APPLICATIONS

Please Note: Optimal dilutions should be determined by each laboratory for each application. *General Protocols* are available in the *Technical Information* section on our website.

	Recommended Concentration	Sample
Immunocytochemistry	8-25 µg/mL	See Below
Immunohistochemistry	5-25 µg/mL	See Below

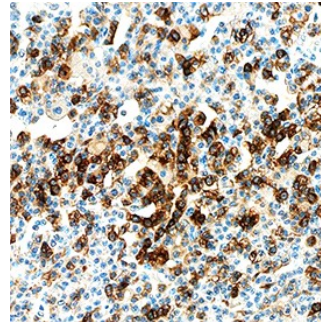
DATA

Immunocytochemistry



Chromogranin A in H69AR Human Cell Line. Chromogranin A was detected in immersion fixed H69AR human small cell lung cancer cell line using Mouse Anti-Human Chromogranin A Monoclonal Antibody (Catalog # MAB90981) at 25 µg/mL for 3 hours at room temperature. Cells were stained using the NorthernLights™ 557-conjugated Anti-Mouse IgG Secondary Antibody (red; Catalog # NL007) and counterstained with DAPI (blue). Specific staining was localized to cytoplasm. View our protocol for [Fluorescent ICC Staining of Cells on Coverslips](#).

Immunohistochemistry



Chromogranin A in Human Parathyroid. Chromogranin A was detected in immersion fixed paraffin-embedded sections of human parathyroid using Mouse Anti-Human Chromogranin A Monoclonal Antibody (Catalog # MAB90981) at 5 µg/mL overnight at 4 °C. Tissue was stained using the Anti-Mouse HRP-DAB Cell & Tissue Staining Kit (brown; Catalog # CTS002) and counterstained with hematoxylin (blue). Specific staining was localized to principal cells. View our protocol for [Chromogenic IHC Staining of Paraffin-embedded Tissue Sections](#).

PREPARATION AND STORAGE

Reconstitution	Reconstitute at 0.5 mg/mL in sterile PBS.
Shipping	The product is shipped at ambient temperature. Upon receipt, store it immediately at the temperature recommended below. *Small pack size (-SP) is shipped with polar packs. Upon receipt, store it immediately at -20 to -70 °C
Stability & Storage	Use a manual defrost freezer and avoid repeated freeze-thaw cycles. <ul style="list-style-type: none"> • 12 months from date of receipt, -20 to -70 °C as supplied. • 1 month, 2 to 8 °C under sterile conditions after reconstitution. • 6 months, -20 to -70 °C under sterile conditions after reconstitution.

BACKGROUND

Human Chromogranin A (CHGA) an acidic protein and a member of the chromogranin/secretogranin family of neuroendocrine secretory proteins. It is located in secretory vesicles of neurons and endocrine cells such as islet beta cell secretory granules in pancreas. Chromogranin A expression has been observed in neuroendocrine tumors, medullary thyroid carcinoma, as well as carcinoid tumors.