

## DESCRIPTION

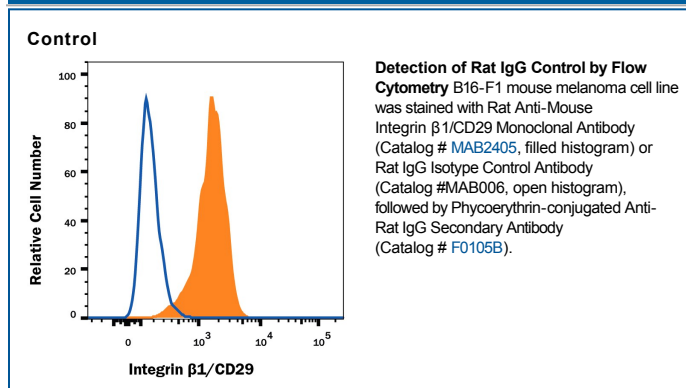
<b>Specificity</b>	Selected for use as rat IgG <sub>2A</sub> isotype control. In direct ELISAs, does not cross-react with recombinant human (rh) 6Ckine, recombinant mouse (rm) 6Ckine, rhACT II (rhMIP-1β), rhBLC/BCA-1, rmBLC, rmC10, recombinant rat (rr) CINC-1, rrCINC-2α, rrCINC-2β, rrCINC-3, rhCKβ8-1, recombinant viral (rv) CMV UL146, rmCRG-2, rhENA-78, rhEotaxin, rmEotaxin, rhEotaxin 2, rhEotaxin-3, rmEotaxin 2, rhFractalkine, rmFractalkine, rrFractalkine, rhGCP-2, rmGCP-2, rhGROα, rhGROβ, rhGROγ, rhHCC-1, rhHCC-4, rhi-309, rhIL-8, recombinant porcine IL-8, rhIP-10, rhi-TAC, rmJE, rmKC, rhLeukotactin -1, rhLymphotactin, rmLymphotactin, rmMARC, rhMCP-1, rhMCP-2, rhMCP-3, rhMCP-4, rhMCP-5, rvMCV Type 2, rhMDC, rmMDC, rhMIG, rmMIG, rhMIP-1α, rmMIP-1α, mmMIP-1β, mmMIP-1γ, rhMIP-1δ, mmMIP-2, rhMIP-3α, rrMIP-3α, rhMIP-3β, rmMIP-3α, mmMIP-3β, rvMIP-I, rvMIP-II, rvMIP-III, rhMPIF-1, rhNAP-2, rhParc, rhRANTES, rmRANTES, rhSDF-1α, rmSDF-1α, rhSDF-1β, rhTarc, rmTARC, rmTCA-3, rhTeck, or rmTeck.
<b>Source</b>	Monoclonal Rat IgG <sub>2A</sub> Clone # 54447
<b>Purification</b>	Protein A or G purified from hybridoma culture supernatant
<b>Immunogen</b>	KLH
<b>Endotoxin Level</b>	<0.10 EU per 1 μg of the antibody by the LAL method.
<b>Formulation</b>	Lyophilized from a 0.2 μm filtered solution in PBS with Trehalose. See Certificate of Analysis for details. *Small pack size (-SP) is supplied as a 0.2 μm filtered solution in PBS.

## APPLICATIONS

**Please Note:** Optimal dilutions should be determined by each laboratory for each application. *General Protocols* are available in the *Technical Information* section on our website.

Negative control for use in conjunction with R&D Systems antibodies. Use at the same concentration as the detection antibody.

## DATA



## PREPARATION AND STORAGE

<b>Reconstitution</b>	Reconstitute at 0.5 mg/mL in sterile PBS.
<b>Shipping</b>	The product is shipped at ambient temperature. Upon receipt, store it immediately at the temperature recommended below. *Small pack size (-SP) is shipped with polar packs. Upon receipt, store it immediately at -20 to -70 °C
<b>Stability &amp; Storage</b>	<b>Use a manual defrost freezer and avoid repeated freeze-thaw cycles.</b> <ul style="list-style-type: none"> <li>● 12 months from date of receipt, -20 to -70 °C as supplied.</li> <li>● 1 month, 2 to 8 °C under sterile conditions after reconstitution.</li> <li>● 6 months, -20 to -70 °C under sterile conditions after reconstitution.</li> </ul>