

## DESCRIPTION

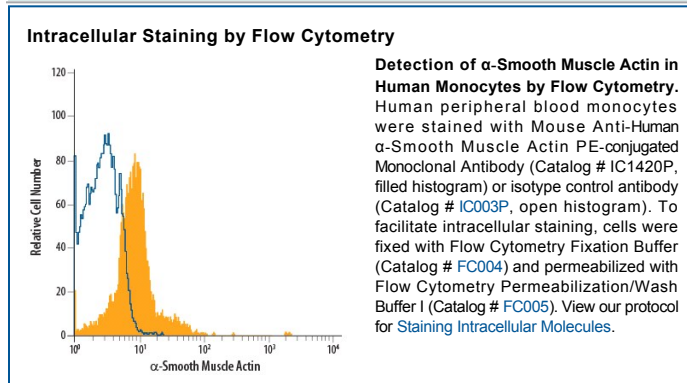
<b>Species Reactivity</b>	Human
<b>Specificity</b>	Detects human $\alpha$ -Smooth Muscle Actin.
<b>Source</b>	Monoclonal Mouse IgG <sub>2A</sub> Clone # 1A4
<b>Purification</b>	Protein A or G purified from hybridoma culture supernatant
<b>Immunogen</b>	$\alpha$ -Smooth Muscle Actin N-terminal Synthetic Decapeptide
<b>Conjugate</b>	Phycoerythrin Excitation Wavelength: 488 nm Emission Wavelength: 565-605 nm
<b>Formulation</b>	Supplied in a saline solution containing BSA and Sodium Azide. See Certificate of Analysis for details.  *Contains <0.1% Sodium Azide, which is not hazardous at this concentration according to GHS classifications. Refer to the Safety Data Sheet (SDS) for additional information and handling instructions.

## APPLICATIONS

**Please Note:** Optimal dilutions should be determined by each laboratory for each application. *General Protocols* are available in the Technical Information section on our website.

	<b>Recommended Concentration</b>	<b>Sample</b>
<b>Intracellular Staining by Flow Cytometry</b>	10 $\mu$ L/10 <sup>6</sup> cells	See Below

## DATA



## PREPARATION AND STORAGE

<b>Shipping</b>	The product is shipped with polar packs. Upon receipt, store it immediately at the temperature recommended below.
<b>Stability &amp; Storage</b>	<b>Protect from light. Do not freeze.</b> <ul style="list-style-type: none"> <li>● 12 months from date of receipt, 2 to 8 °C as supplied.</li> </ul>

## BACKGROUND

$\alpha$ -Smooth Muscle Actin has been frequently used as a marker of smooth muscle differentiation (1, 2).

### References:

1. Skalli, O. *et al.* (1986) J. Cell Biol. **103**:2787.
2. Oishi, K. *et al.* (2002) J. Physiol. **540**:139.