

DESCRIPTION

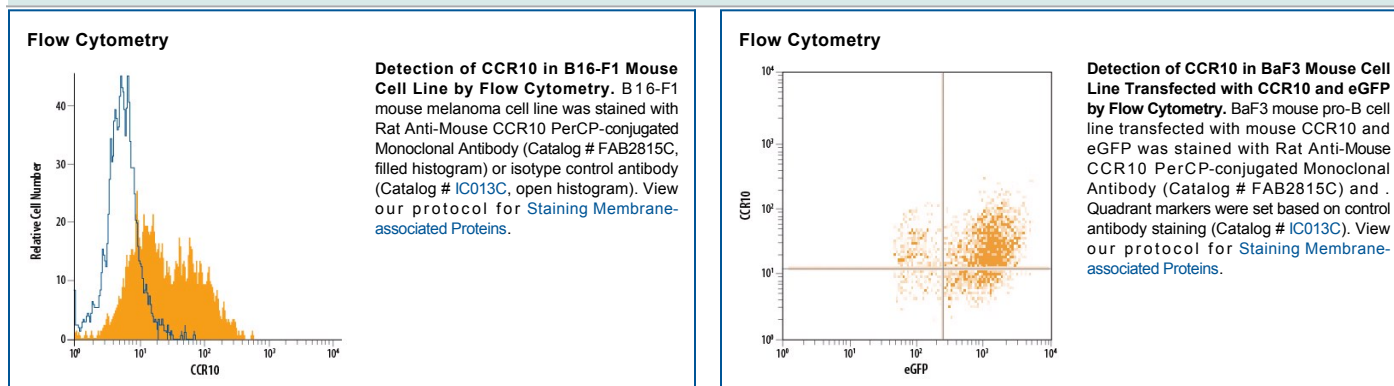
Species Reactivity	Mouse
Specificity	Detects mouse CCR10. Stains mouse CCR10-transfected cells but not irrelevant transfectants.
Source	Monoclonal Rat IgG _{2B} Clone # 248918
Purification	Protein A or G purified from hybridoma culture supernatant
Immunogen	C6 rat glioma cell line transfected with mouse CCR10 Met1-Asn362 Accession # NP_031747
Conjugate	PerCP (Peridinin-chlorophyll Protein Complex) Excitation Wavelength: 482 and 564 nm Emission Wavelength: 675 nm
Formulation	Supplied in a saline solution containing BSA and Sodium Azide. See Certificate of Analysis for details. *Contains <0.1% Sodium Azide, which is not hazardous at this concentration according to GHS classifications. Refer to the Safety Data Sheet (SDS) for additional information and handling instructions.

APPLICATIONS

Please Note: Optimal dilutions should be determined by each laboratory for each application. [General Protocols](#) are available in the Technical Information section on our website.

	Recommended Concentration	Sample
Flow Cytometry	10 µL/10 ⁶ cells	See Below

DATA



PREPARATION AND STORAGE

Shipping	The product is shipped with polar packs. Upon receipt, store it immediately at the temperature recommended below.
Stability & Storage	Protect from light. Do not freeze. <ul style="list-style-type: none"> 12 months from date of receipt, 2 to 8 °C as supplied.

BACKGROUND

CCR10 is a G protein-linked seven transmembrane domain protein expressed by T cells and B cell subsets that functions as a receptor for CCL27. CCR10 mediates lymphocyte migration to the skin and mucosa, and its expression correlates with the metastatic capacity of melanomas.