

## DESCRIPTION

|                           |   |
|---------------------------|---|
| <b>Species Reactivity</b> | Mouse   |
| <b>Specificity</b>        | Detects mouse Complement Component C3d in direct ELISAs and Western blots. In direct ELISAs and Western blots, less than 1% cross-reactivity with recombinant mouse Complement Component C5a is observed. |
| <b>Source</b>             | Polyclonal Goat IgG   |
| <b>Purification</b>       | Antigen Affinity-purified   |
| <b>Immunogen</b>          | <i>E. coli</i> -derived recombinant mouse Complement Component C3d<br>His1002-Arg1303 (Cys1010Ser)<br>Accession # P01027  |
| <b>Formulation</b>        | Lyophilized from a 0.2 µm filtered solution in PBS with Trehalose. See Certificate of Analysis for details.<br>*Small pack size (-SP) is supplied as a 0.2 µm filtered solution in PBS.                   |

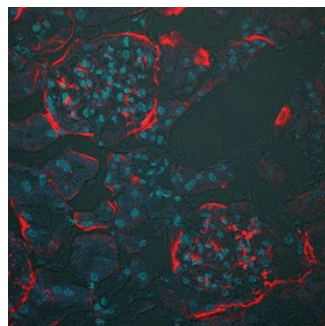
## APPLICATIONS

**Please Note:** Optimal dilutions should be determined by each laboratory for each application. [General Protocols](#) are available in the [Technical Information](#) section on our website.

|                             | Recommended Concentration | Sample                                     |
|-----------------------------|---------------------------|--|
| <b>Western Blot</b>         | 0.1 µg/mL                 | Recombinant Mouse Complement Component C3d |
| <b>Immunohistochemistry</b> | 5-15 µg/mL                | See Below                                  |

## DATA

### Immunohistochemistry



**Complement Component C3d in Mouse Kidney.** Complement Component C3d was detected in perfusion fixed frozen sections of mouse kidney using Goat Anti-Mouse Complement Component C3d Antigen Affinity-purified Polyclonal Antibody (Catalog # AF2655) overnight at 4 °C. Tissue was stained using the NorthernLights™ 557-conjugated Anti-Goat IgG Secondary Antibody (red; Catalog # NL001) and counterstained with DAPI (blue). Specific staining was localized to basement membrane. View our protocol for [Fluorescent IHC Staining of Frozen Tissue Sections](#).

## PREPARATION AND STORAGE

|                                |  |
|--------------------------------|--|
| <b>Reconstitution</b>          | Reconstitute at 0.2 mg/mL in sterile PBS.  |
| <b>Shipping</b>                | The product is shipped at ambient temperature. Upon receipt, store it immediately at the temperature recommended below.<br>*Small pack size (-SP) is shipped with polar packs. Upon receipt, store it immediately at -20 to -70 °C   |
| <b>Stability &amp; Storage</b> | <b>Use a manual defrost freezer and avoid repeated freeze-thaw cycles.</b> <ul style="list-style-type: none"> <li>● 12 months from date of receipt, -20 to -70 °C as supplied.</li> <li>● 1 month, 2 to 8 °C under sterile conditions after reconstitution.</li> <li>● 6 months, -20 to -70 °C under sterile conditions after reconstitution.</li> </ul> |