

# INSL 5 C-Peptide, Prepro (49-106) (Human) - Antibody for Immunohistochemistry

Catalog#	Standard size	Price	Order
H-035-58	50 µl	\$450.00	<input type="button" value="ORDER"/>

## Product description

## More information

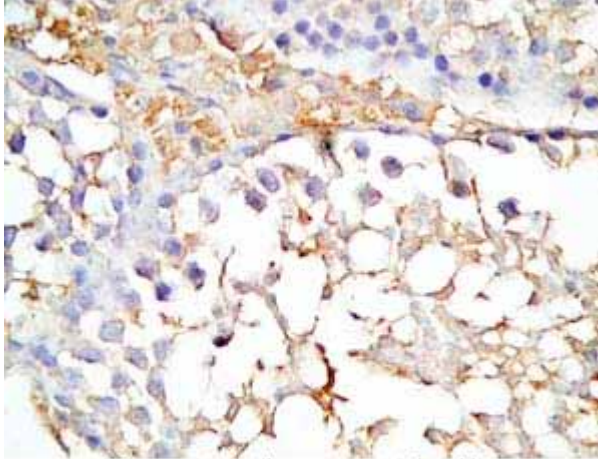
[Relaxin & Relaxin-Related Peptides](#)

[Insulin-like 5 Peptide \(INSL 5\)](#)

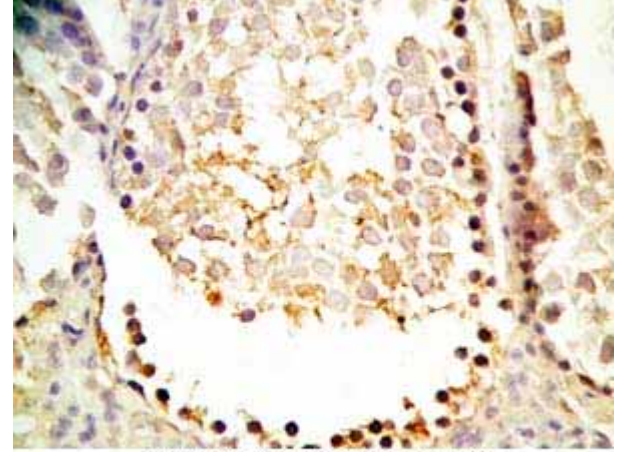
[C Peptide of INSL-5](#)

[Relaxin Evolution](#)

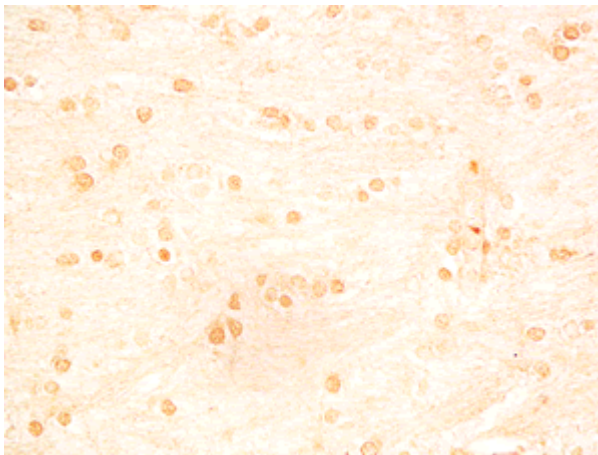
## Image



Mouse testis tissue was stained by Anti-INSL5, C Peptide (Human) Antibody (Catalog No.: H-035-58)



Rat testis tissue was stained by Rabbit Anti-INSL5, C Peptide (Human) Antibody (Catalog No.: H-035-58)



Rat brain tissue was stained by Rabbit Anti- INSL5, C Peptide (49-106) ( Human) Serum (Catalog No.: H-035-58, Lot No.: PBR121-3)

### Protocol for Immunohistochemistry:

Tissue Sample	Rat brain and testis, Mouse testis tissue
Fixative	10% Formalin
Embedding	Paraffin
Negative control	No primary antibody
Pretreatment	Intact
Blocking	2% Normal Goat Serum
Primary Antibody	Rabbit Anti-INSL5, C Peptide (Human) Serum (Catalog No.:H-035-58)
Optimal Dilution	1: 500
Secondary Antibody	Goat anti-Rabbit IgG, Biotinylated (1:400, 30 min)
Amplification	ABC (Vector) (1:400, 30 min)
Detection system	HRP
Substrate	DAB (Sigma), 3 min
Counterstained	Hematoxylin, 30 Sec

<b>Catalog #</b>	H-035-58
<b>Family</b>	C Peptide
<b>Standard Size</b>	50 µl
<b>Species</b>	Human
<b>Host</b>	Rabbit
<b>Immunogen</b>	Human INSL5, C Peptide
<b>Storage Condition</b>	For optimal results, use the antibody as soon as possible after reconstitution. Store in lyophilized form unless needed and reconstitute immediately before use. Once reconstituted, the antibody should be stable for a few days at -4°C. For storage up to a few months, prepare small aliquots after reconstitution and freeze at -20°C or -80°C. Repeated freeze thaw cycles should be strictly avoided.

Thursday 20 December, 2012

11986599 requests since Wednesday 05 April, 2006

Copyright © 2012 PHOENIX PHARMACEUTICALS, INC.