

Spexin, Prepro (36-58) (Human) - Antibody for Immunohistochemistry

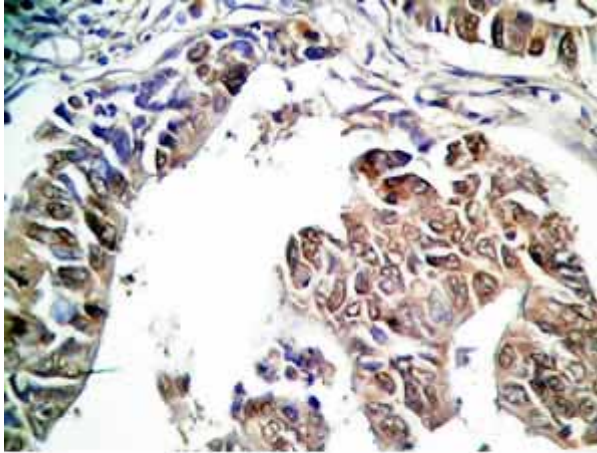
Catalog#	Standard size	Price	Order
H-023-82	100 µl	\$450.00	<input type="button" value="ORDER"/>

Product description

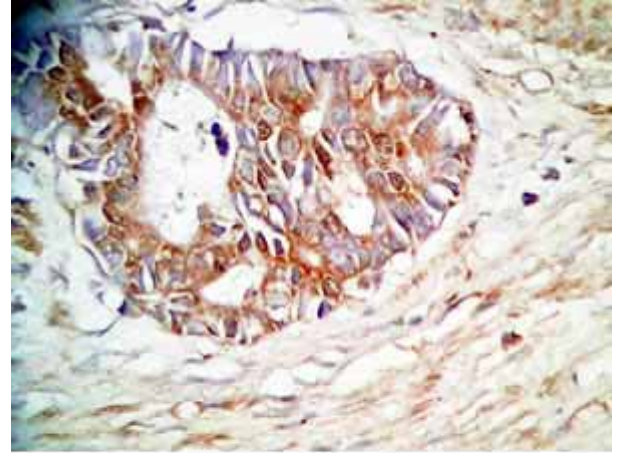
More information

Spexin / NPO (Human, Mouse)

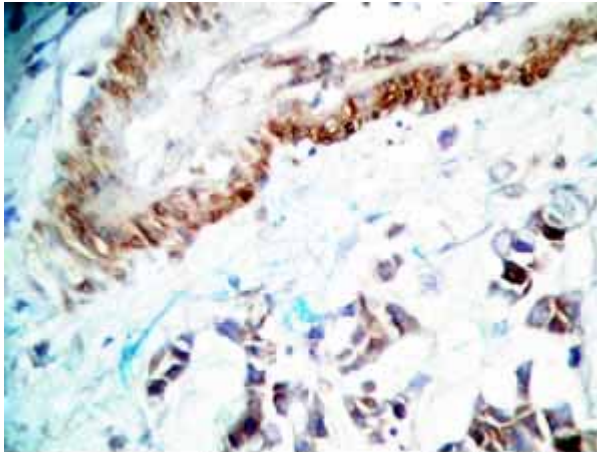
Image



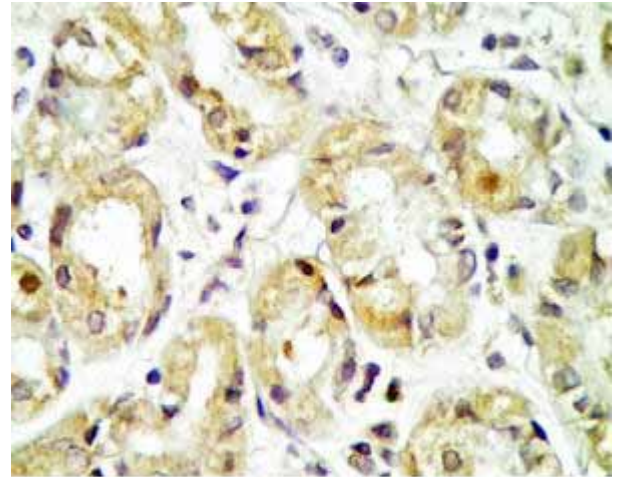
Human stomach cancer tissue was stained by rabbit anti-Spexin, Prepro (36-58) (H), Antiserum (Cat. No.: H-023-82)



Human stomach cancer tissue was stained by rabbit anti-Spexin, Prepro (36-58), (H) Antiserum (Cat. No.: H-023-82)



Human stomach cancer tissue was stained by rabbit anti-Spexin, Prepro (36-58), (H) Antiserum (Cat. No.: H-023-82)



human stomach tissue was stained by rabbit Anti-Spexin, prepro (36-58) Antibody (code H-023-82)

Protocol for Immunohistochemistry

Tissue Sample	Human stomach tissues and stomach cancer tissues
Fixative	10% Formalin
Embedding	Paraffin
Negative control	No primary antibody
Pretreatment	N/A
Blocking	3% H ₂ O ₂ , 2% Normal Goat Serum
Primary Antibody	Rabbit Anti-Spexin, Prepro (36-58) (H) Antiserum (Catalog No.: H-023-82)
Optimal Dilution	1:500, 1 hour at RT
Secondary Antibody	Goat anti-Rabbit IgG, Biotinylated (1:400, 30 min)
Amplification	Streptavidin-HRP (Vector), 1:400, 30 min
Detection system	HRP
Substrate	DAB (Sigma), 3 min
Counterstained	Hematoxylin, 30 Sec

Catalog # H-023-82

Family Spexin

Standard Size	100 µl
Sequence	Asn - Trp - Thr - Pro - Gln - Ala - Net - Leu - Tyr - Leu - Lys - Gly - Ala - Gln - Gly - Arg - Arg - Phe - Ile - Ser - Asp - Gln - Ser
Species	Human
Host	Rabbit
Immunogen	Spexin, Prepro (36-58) (Human)
Reconstitution	100 ul
Storage Condition	For optimal results, use the antibody as soon as possible after reconstitution. Store in lyophilized form unless needed and reconstitute immediately before use. Once reconstituted, the antibody should be stable for a few days at -4°C. For storage up to a few months, prepare small aliquots after reconstitution and freeze at -20°C or -80°C. Repeated freeze thaw cycles should be strictly avoided.