

Spexin / NPO (Human, Mouse, Bovine) - Antibody for Immunohistochemistry

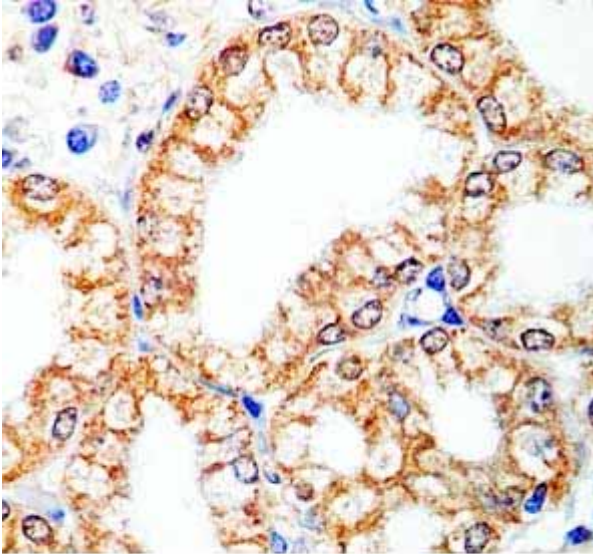
Catalog#	Standard size	Price	Order
H-023-81	100 μ l	\$450.00	<input type="button" value="ORDER"/>

Product description

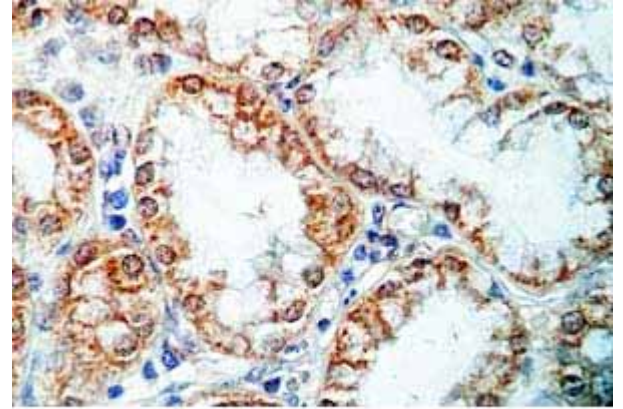
More information

Spexin / NPO (Human, Mouse)

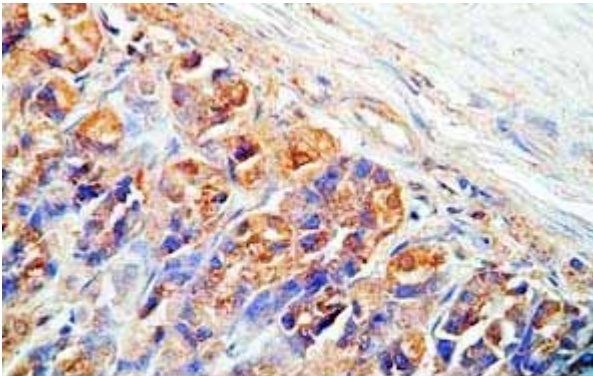
Image



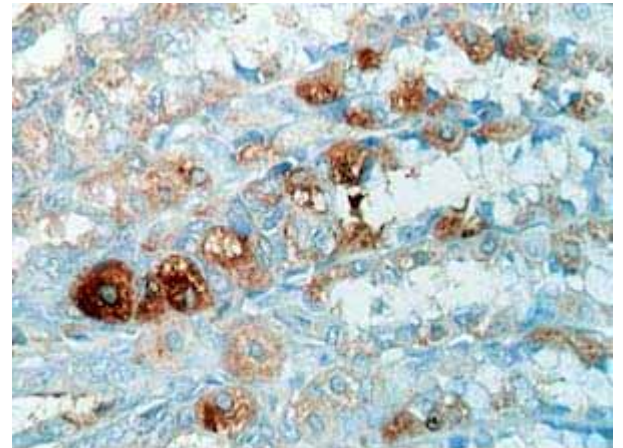
Human stomach tissue was stained by Rabbit Anti-Spexin (H) Antibody (cat. No.: H-023-81)



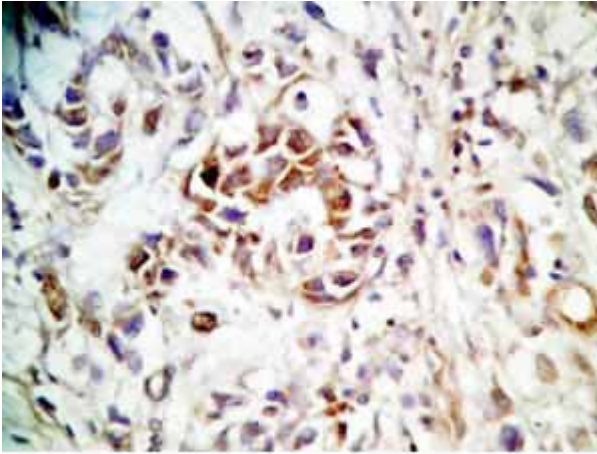
Human stomach tissue was stained by Rabbit Anti-Spexin (H) Antibody (cat.No.: H-023-81)



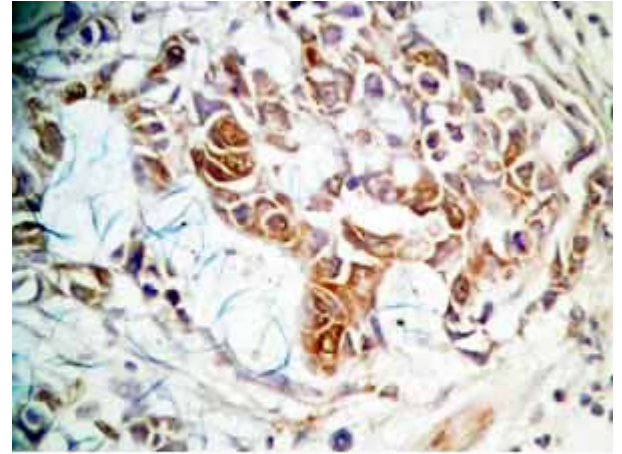
Rat stomach tissue was stained by Rabbit Anti-Spexin (H) Antibody (cat. No.: H-023-81)



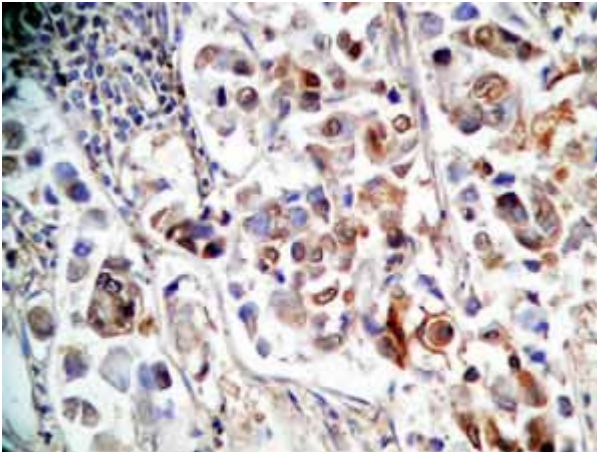
Rat stomach tissue was stained by Rabbit Anti-Spexin (H) Antibody (cat.No.: H-023-81)



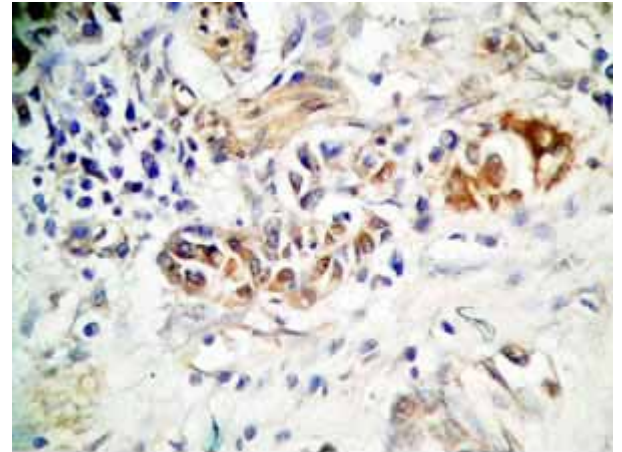
Human stomach cancer tissue was stained by rabbit anti-Spexin (H) Antiserum (Cat. No.: H-023-81)



Human stomach cancer tissue was stained by rabbit anti-Spexin (H) Antiserum (Cat. No.: H-023-81)



Human stomach cancer tissue was stained by rabbit anti-Spexin (H) Antiserum (Cat. No.: H-023-81)



Human stomach cancer tissue was stained by rabbit anti-Spexin (H) Antiserum (Cat. No.: H-023-81)

Protocol for Immunohistochemistry

Tissue Sample	Human stomach tissues, stomach cancer tissues and rat stomach tissues
Fixative	10% Formalin
Embedding	Paraffin
Negative control	No primary antibody
Pretreatment	N/A
Blocking	2% Normal Goat Serum
Primary Antibody	Rabbit Anti-Spexin (H) Antiserum (Catalog No.: H-023-81)
Optimal Dilution	1:500, 1 hour at RT
Secondary Antibody	Goat anti-Rabbit IgG, Biotinylated (1:400, 30 min)
Amplification	Streptavidin-HRP (Vector), 1:400, 30 min
Detection system	HRP
Substrate	DAB (Sigma), 3 min
Counterstained	Hematoxylin, 30 Sec

Catalog # H-023-81

Family Spexin

Standard Size 100 µl

Sequence Asn - Trp - Thr - Pro - Gln - Ala - Met - Leu - Tyr - Leu - Lys - Gly - Ala - Gln - NH₂

Species Human, Mouse, Bovine

Host Rabbit

Immunogen Spexin / NPQ (Human, Mouse, Bovine)

Reconstitution For best and reproducible results, reconstitute with 100µl of distilled water for the equivalent of undiluted

antiserum, immediately before use. Do not refreeze any unused portions.

**Storage
Condition**

For optimal results, use the antibody as soon as possible after reconstitution. Store in lyophilized form unless needed and reconstitute immediately before use. Once reconstituted, the antibody should be stable for a few days at -4°C. For storage up to a few months, prepare small aliquots after reconstitution and freeze at -20°C or -80°C. Repeated freeze thaw cycles should be strictly avoided.

**Recommended
Dilution
Factor** Immunohistochemistry - 1:500