

# VIP (Human, Rat, Mouse, Porcine, Ovine) - EIA Kit

| Catalog#  | Standard size | Price    | Order                 |
|-----------|---------------|----------|-----------------------|
| EK-064-16 | 1 kit         | \$420.00 | <a href="#">ORDER</a> |

- Product description**
- More information
- References

[VIP \(Vasoactive Intestinal Peptide /PHI and Related Peptides\)](#)

[Prepro-VIP/PHM-27 Schematic \(Human\)](#)

[Normal Plasma Peptide/Protein Levels](#)

**Protocol** [Assay Protocol \(PDF\)](#)

**Sample Preparation** [Blood collection](#)  
[Plasma extraction](#)  
[Tissue extraction](#)  
[CSF extraction](#)

**Catalog #** EK-064-16

**Standard Size** 96 wells

**Sensitivity** Minimum Detectable Concentration = 0.12 ng/ml

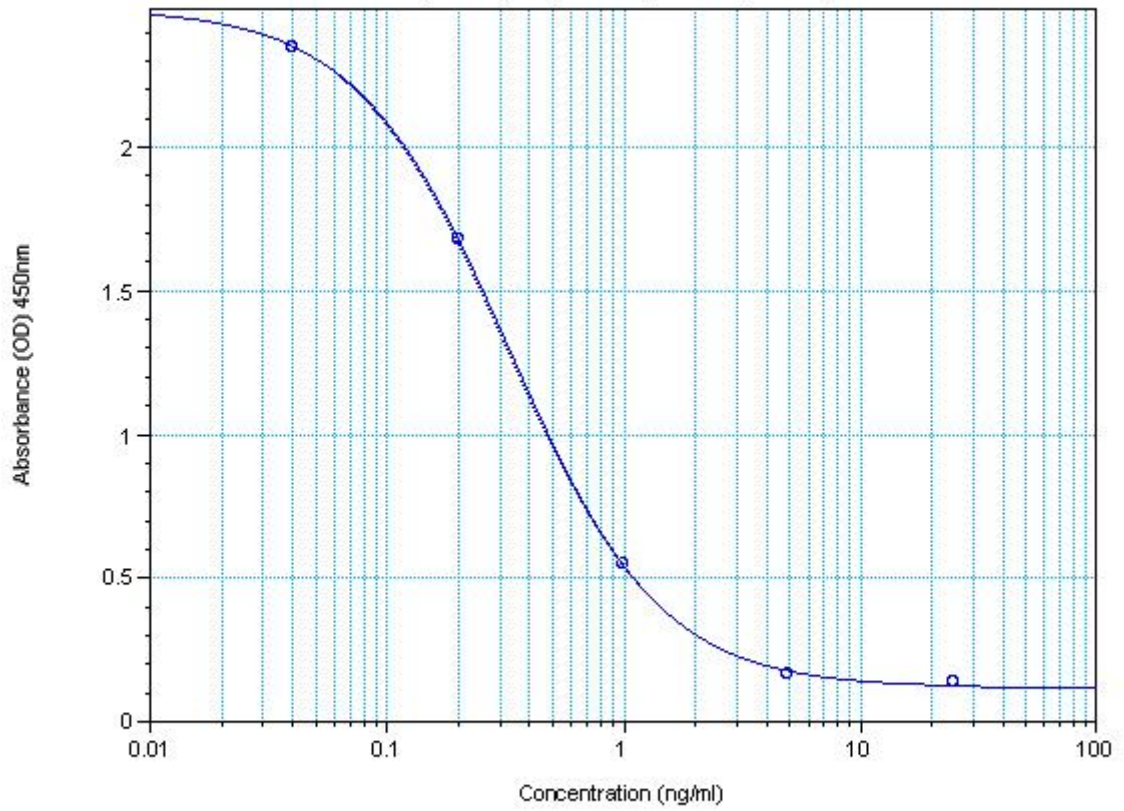
**Range** 0-25 ng/ml

**Linear Range** 0.12-0.93 ng/ml

| <b>Cross Reactivity</b> | <b>Peptide</b>  | <b>%Cross-reactivity</b> |
|-------------------------|---|--------------------------|
|                         | VIP (Human, Porcine, Rat)                                 | 100                      |
|                         | VIP (Guinea Pig)  | 100                      |
|                         | VIP (10-28) (Human, Porcine, Rat)                         | 34.6                     |
|                         | VIP (Chicken)   | 28                       |
|                         | PACAP-27-NH2 (Human, Rat, Ovine)                          | <0.02                    |
|                         | VIP (1-12) (Human, Porcine, Rat)                          | 0                        |
|                         | PHM-27 (Human)  | 0                        |
|                         | Substance P   | 0                        |
|                         | Endothelin-1 (Human, Rat, Porcine, Mouse, Canine, Bovine) | 0                        |
|                         | Secretin (Porcine)  | 0                        |
|                         | Glucagon (Human)  | 0                        |
|                         | Galanin (Rat)   | 0                        |
|                         | Somatostatin  | 0                        |
|                         | PACAP-38 (Human, Rat, Ovine)                              | 0                        |

**Sequence** His - Ser - Asp - Ala - Val - Phe - Thr - Asp - Asn - Tyr - Thr - Arg - Leu - Arg - Lys - Gln - Met - Ala - Val - Lys - Lys - Tyr - Leu - Asn - Ser - Ile - Leu - Asn - NH2

EK-064-16 VIP (Human, Rat, Mouse, Porcine, Ovine) Standard Curve



$$y = ((A - D) / (1 + (x/C)^B)) + D$$