

# Somatostatin-28 (Human, Rat, Mouse, Porcine) - EIA Kit

Catalog#	Standard size	Price	Order
EK-060-14	1 kit	\$420.00	<input type="button" value="ORDER"/>

## Product description

## More information

## References

Neuronostatin

Normal Plasma Peptide/Protein Levels

**Protocol** [Assay Protocol \(PDF\)](#)

**Sample Preparation** [Blood collection](#)  
[Plasma extraction](#)  
[Tissue extraction](#)  
[CSF extraction](#)

**Catalog #** EK-060-14

**Standard Size** 96 wells

**Sensitivity** Minimum Detectable Concentration = 0.06ng/ml

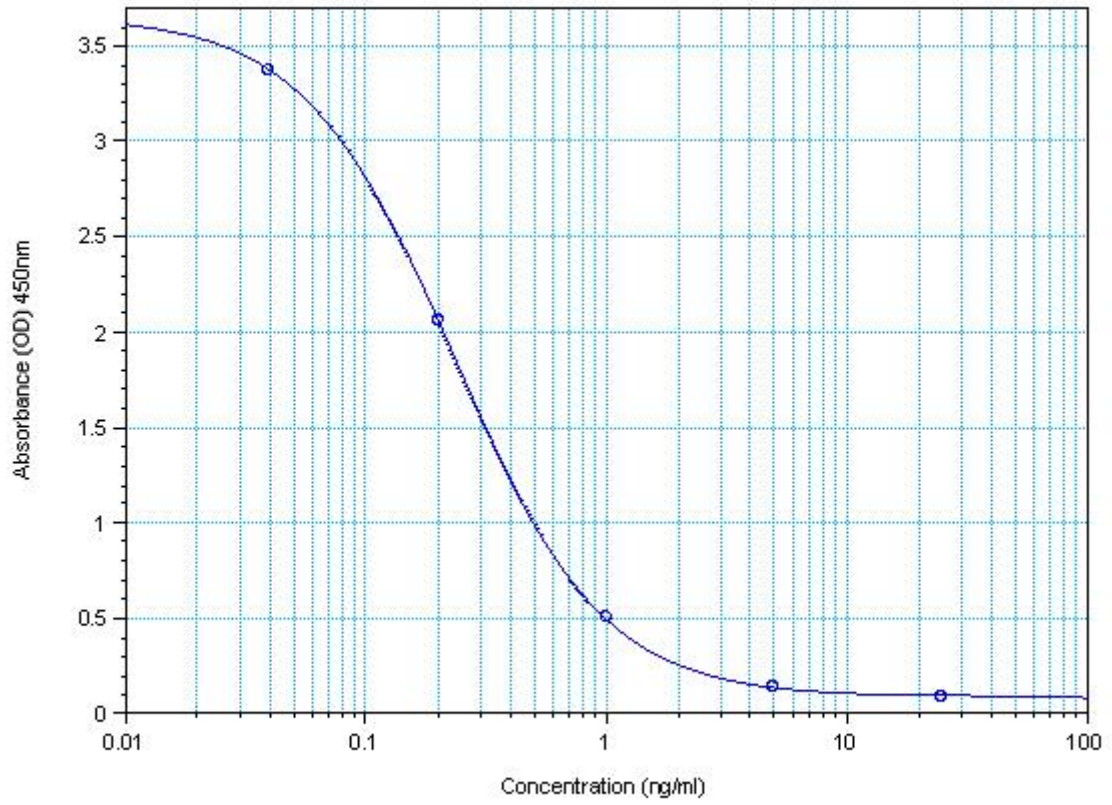
**Range** 0-25ng/ml

**Linear Range** 0.06-0.52ng/ml

<b>Cross Reactivity</b>	<b>Peptide</b>	<b>%Cross-reactivity</b>
	Somatostatin-28	100
	Somatostatin	100
	Somatostatin-25	100
	[Des-Ala1]-Somatostatin	100
	Somatostatin (1-32)	0
	Pro-Somatostatin-32	0
	Somatostatin Analog, RC-160	0
	Somatostatin Analog (CTOP)	0
	Insulin (Human)	0
	Glucagon (Human)	0
	Amylin (Human)	0
	Substance P	0
	VIP (Human, Porcine, Rat)	0
	NPY (Porcine)	0

**Sequence** Ser - Ala - Asn - Ser - Asn - Pro - Ala - Met - Ala - Pro - Arg - Glu - Arg - Lys - Ala - Gly - Cys - Lys - Asn - Phe - Phe - Trp - Lys - Thr - Phe - Thr - Ser - Cys

EK-060-14 Somatostatin-28 (Human, Rat, Mouse, Porcine) Standard Curve



$$y = ( (A - D) / (1 + (x/C)^B) ) + D$$