

PYY (3-36) (Human) - EIA Kit

Catalog#	Standard size	Price	Order
EK-059-02	1 kit	\$420.00	<input type="button" value="ORDER"/>

Product description

More information

References

[PYY](#)

[PYY Immunoassay Kits](#)

[PYY Sequence Comparison](#)

[Normal Plasma Peptide/Protein Levels](#)

[PYY Antibodies](#)

[PYY EIA Kit References](#)

Protocol [Assay Protocol \(PDF\)](#)

Sample Preparation [Blood collection](#)
[Plasma extraction](#)
[Tissue extraction](#)
[CSF extraction](#)

Catalog # EK-059-02

Standard Size 96 wells

Sensitivity Minimum Detectable Concentration = 0.06 ng/ml

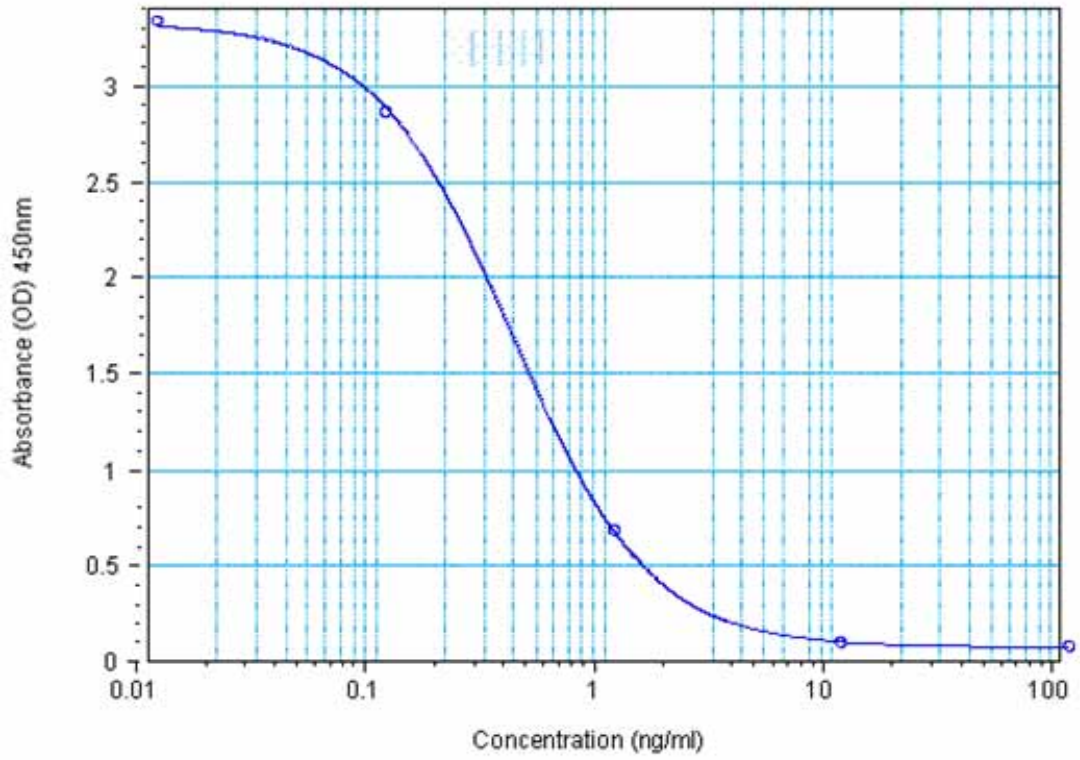
Range 0-100 ng/ml

Linear Range 0.06-0.67 ng/ml

Cross Reactivity	Peptide	%Cross-reactivity
	Peptide YY (3-36) (Human)	100
	Peptide YY (Human)	100
	Peptide YY (Rat, Mouse, Porcine)	5
	Peptide YY (3-36)(Rat, Mouse, Porcine)	5
	Neuropeptide Y (Porcine)	0
	Pancreatic Polypeptide (Human)	0
	Insulin (Human)	0
	Glucagon (Human)	0
	Amylin Amide (Human)	0
	Substance P	0

Sequence Ile - Lys - Pro - Glu - Ala - Pro - Gly - Glu - Asp - Ala - Ser - Pro - Glu - Glu - Leu - Asn - Arg - Tyr - Tyr - Ala - Ser - Leu - Arg - His - Tyr - Leu - Asn - Leu - Val - Thr - Arg - Gln - Arg - Tyr - NH₂

EK-059-02 PYY(3-36)



Log-Logit Fit: $y = (A - D) / (1 + (x/C)^B) + D$:

o